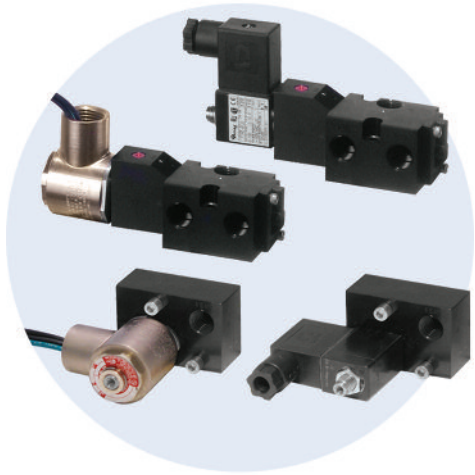


# Solenoids

## Solenoid Valves and Connectors



The Assured Automation E and C series control valve is an inexpensive, simple and effective 3-way (E) or 3/4-way (C) solenoid/pilot valve. They are designed to mount directly to an NAMUR actuator thus reducing cost of tubing, fittings, brackets and labor.

The E series is only available in a 3-way configuration, which is most effective on spring return or fail-safe actuators where high speed open or close is not important. The C series is available in 3-way or 4-way configuration, which can be used on spring return or double acting actuators. Manual overrides (guarded-push to operate) are standard on all C series solenoid/pilot valves.

The B series is only available in a 3-way configuration, which is most effective on spring return or fail-safe actuators and is designed to mount to non-NAMUR actuators.

### SOLENOID MODEL NUMBERING

Model Number: \_\_\_\_\_ XXX

Type: \_\_\_\_\_

**B** = 3-way 1/8" G thread\*  
**E** = 3-way NAMUR  
**C** = 3/4-way NAMUR

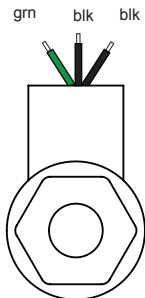
Connector: \_\_\_\_\_

**1** = Weatherproof, NEMA 4/4X, Potted 1/2" Conduit  
**2** = Explosion Proof, NEMA 4/4X & 7, Potted 1/2" Conduit, UL Listed, CSA Approved  
**3** = Weatherproof, NEMA 4/4X, Mini DIN, Cord Grip PG9  
**4** = Weatherproof, NEMA 4/4X, Mini DIN, 1/2" Conduit  
**5** = Weatherproof, NEMA 4/4X, Mini DIN, 6' Cord Set  
**6** = Weatherproof, NEMA 4/4X, Mini DIN, 15' Cord Set

### WIRING

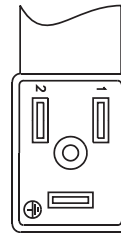
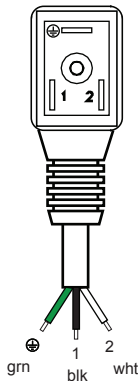
#### Potted Conduit w/ Wire Leads

(2) Black = Energize (+ /  
 (1) Green = Gro



#### Cord Grip Cable Gland, Conduit, and Corded

Normal polarity: 1 = (+) Positive, High  
 2 = (-) Negative, Neutral  
 ⊕ = Chassis Ground



Voltage: \_\_\_\_\_

**A** = 120 VAC  
**B** = 24 VDC  
**C** = 220 VAC  
**E** = 24 VAC  
**F** = 12 VDC  
**J** = 48 VDC\*\*

\* Only available with #3 connector.  
 \*\* Models E & C only.

### CV FACTORS & COIL POWER

Model	CV	Connector	Nominal Coil Power	
			AC	DC
B	.06	3	6 VA	5 W
		1	6 W	7 W
E	.08	2	5.6 W	7.2 W
		3 & 4	8.5 W	10.5 W
C	.75	1	6 W	7 W
		2	5.6 W	7.2 W
		3 & 4	8.5 W	10.5 W

### CONNECTORS

