

WM-PC Series

Plastic Water Meter



The WM-PC Series plastic water meter is an multi-jet style meter available in sizes from 1/2" to 1-1/2" with a dry type register for residential applications and designed to meet AWWA C708. The product complies with NSF/ANSI 61 and conforms with lead-free plumbing as defined by California, Vermont, Maryland and Louisiana state laws and the U.S. Safe Drinking Water Act that took effect January, 2014. It is an ideal choice for a range of municipal and industrial water metering applications.

Water flows through the meter's strainer (inlet and internal) and into the measuring chamber where it drives the impeller. A driving magnet transmits the movement of the impeller to a driven magnet located within the sealed register. The magnet is connected to a gear train which translates the impeller rotations into volume totalizers displayed on the meter's register dial face.

The WM-PC Series water meter is top loaded and consists of three basic components: main case, measuring chamber, and head ring. The main cases of all sizes are constructed with a sturdy polymer.

All meters include pipe adapters (2 gaskets, 2 couplings, and 2 nuts) with nuts and couplings made from the same polymer as the main case, except the 1-1/2" which substitutes brass for the coupling material.

FEATURES

- All parts in contact with water are constructed of corrosion-resistant materials.
- Body is constructed of reinforced plastic.
- Impeller is the only moving part in contact with water, giving the meter long life and consistently reliable operation.
- Extra filter at the inlet of the meter body permits cleaning without having to open the meter.
- Dial plate design in US Gallons.
- Optional pulse output consisting of plastic housing with contact reed switch and cable.

MATERIALS OF CONSTRUCTION

Body:
FRP (fiber reinforced polymer)

Internals:
Engineered thermoplastic

Magnet:
Alnico

PRESSURE RANGE

Up to 150 PSI.

TEMPERATURE RANGE

Up to 105°F.

SPECIFICATIONS

Maximum Reading:
050, 075 & 100: 9,999,999.99
150: 99,999,999.9

Accuracy:
Normal flow: $\pm 1.5\%$
Low flow: $\pm 3\%$

OPTIONAL PULSE OUTPUT SPECIFICATIONS

Sensor:
Reed switch

Pulse Rates:
050, 075 & 100: 1 pulse/1 gal.
150: 1 pulse/10 gal.

Maximum Current:
20 mA

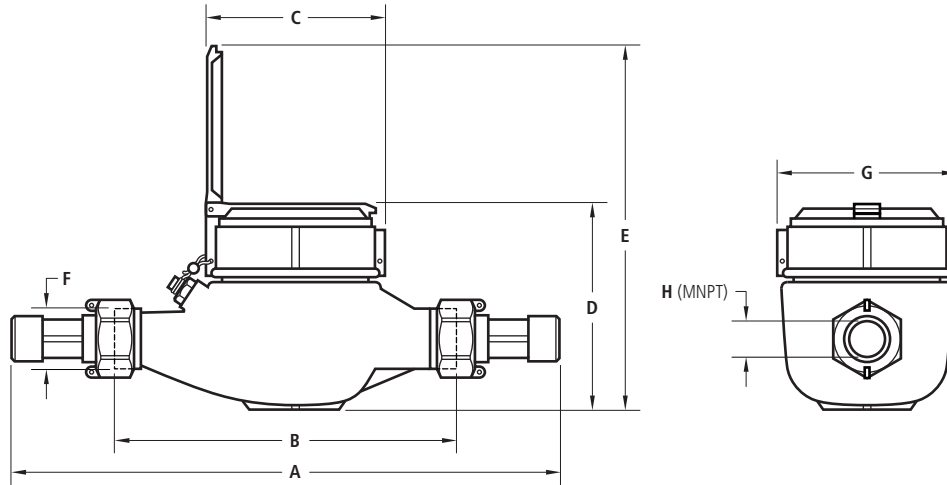
Maximum Voltage:
24 VAC/VDC

Cable Length:
4.5' standard,
2000' maximum run

WM-PC Series

Plastic water meter

(1/2" to 1-1/2" end connections)

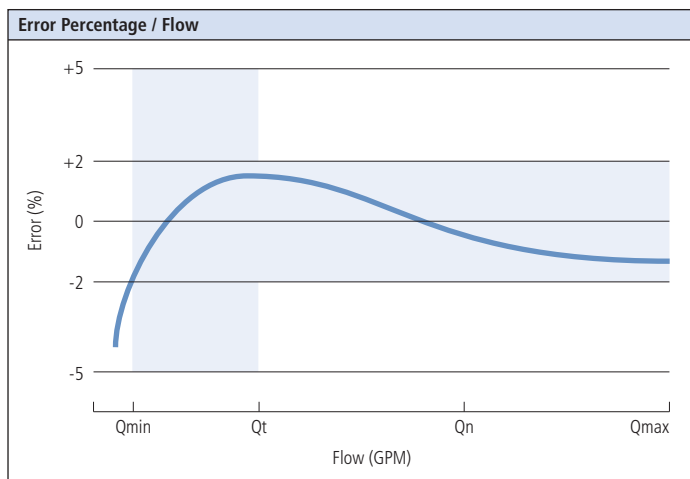


DIMENSIONS, WEIGHTS & SPECIFICATIONS

Size	A	B	C	D	E	F	G	H (MNPT)	Flow Rate (GPM)			Normal Flow (GPM) (Qt - Qn)	Wt. (lbs.)	Model No.
									Low (Qmin)	Continuous	High (Qmax)			
5/8" x 1/2"	10.20	6.50	3.70	4.24	7.52	0.75	3.70	0.50	0.25	10	20	1-20	1.65	WM-PC-050
5/8" x 3/4"	11.58	7.50	3.70	4.24	7.52	1.00	3.70	0.75	0.25	10	20	1-20	1.87	WM-PC-075
1"	15.12	10.25	3.86	4.63	8.13	1.25	3.86	1.00	0.75	25	50	3-50	2.64	WM-PC-100
1-1/2"	14.77	9.65	4.81	5.58	10.10	2.00	4.80	1.50	1.50	50	100	5-100	4.78	WM-PC-150

A = total length including connection and gasket without compression.

ACCURACY CURVE



Note: refer to chart above for Qmin, Qmax, Qt, Qn values

HEAD LOSS CURVES

