

SO Series

Limit Switch Box



The SO series limit switch box provides a compact design and the most economical solution for both visual and remote electrical indication of rotary valve/actuator position. Integral NAMUR mounting legs provide additional cost savings by eliminating the need for a separate mounting bracket. The switch options available make the SM series suitable for use in NEMA 4, 4X weather proof applications and intrinsically safe applications.

FEATURES

- IP65 weather proof enclosure.
- Compact design.
- Flat or 3D visual position indicator.
- Integral mounting bracket that conforms to NAMUR VDI/VDE3845 dimensional standards.
- Easy-Set splined cams for tool-free calibration and positive vibration resistant engagement.
- Standard PCB and extra solenoid terminals.

MATERIALS OF CONSTRUCTION

- Body:**
Die cast aluminium, nickel plated.
- Cover:**
UV resistant V0 polycarbonate.
- Shaft:**
Reinforced techno polymer.
- Fasteners:**
Stainless steel.

SO SERIES MODEL NUMBERING

Model Number: **SO XX 20N-X X**

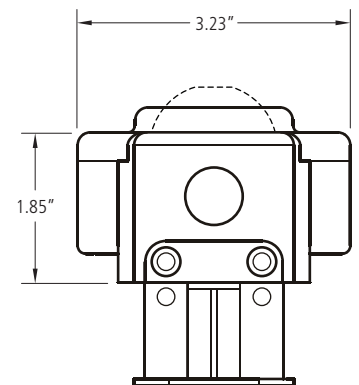
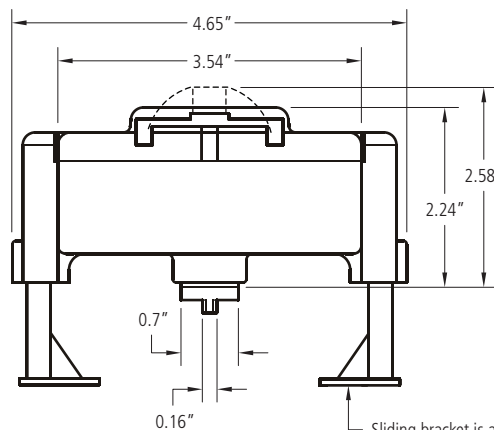
- Switch Type: _____
- 01** = Electromech SPDT
Ag plated contacts
 - 70** = Proximity NAMUR
P+F NJ2-V3-N
 - 71** = Proximity NO
P+F NBB2-V3-US
 - 73** = Proximity PNP NO
P+F NBB2 V3 E2
 - 75** = Proximity NO/NC
programmable
IFM IS5026
 - 83** = Proximity NO
P+F NBB3 V3 Z4

Cable Entry:
1 = 1 1/2" NPT
2 = M20x1.5

Optional:
H = 3D visual indicator

TEMPERATURE RANGE

5°F to 176°F



Sliding bracket is adjustable to both 1.18" x 3.15" and 1.18" x 5.12" top pattern, and 0.79", 1.18", 1.58" and 1.97" pinion heights.