

P2 Series

PVC / CPVC Full Port 2-way Ball Valve



P2 Series ball valves offer a variety of advanced features such as a high quality stem and ball support system, and a multifunctional locking handle. The new Dual Block® system locks the union nuts preventing back-off due to vibration or thermal cycling. Deep grooves, thick o-rings, and cushioned PTFE seats contribute to strong seals at pressures up to 232 PSI while an integral mounting flange and support bracketing combine for simple adaptation for valve actuation and anchoring.

FEATURES

- Expansion and contraction compensating groove on the molded end of the valve body.
- Valve body, union nuts, and carrier have deep square style threads for increased strength.
- Ball and stem are machined smooth to minimize wear on valve seats and seals.
- All valve seats have o-ring backing cushions to compensate for wear and prevent seizure of the ball.
- Stem design features double o-ring seals as well as a safety shear point above the o-rings.
- All of the valve materials comply with standards that are equivalent to NSF Standard 61 for potable water.
- An integrated molded bracket for valve and pipeline mounting is standard.
- Integrated valve support and ISO actuator pads are available.

MATERIALS OF CONSTRUCTION

Body, Ball and Stem:
PVC or CPVC.

Seats:
PTFE.

Seals:
EPDM or Viton® (FPM).

ACTUATOR CONFIGURATIONS

- Electric.
- Pneumatic (spring return).
- Pneumatic (double acting).
- Manual handle lever.

MAXIMUM PRESSURE

232 PSI (at 73°F)

TEMPERATURE RANGE

32°F to 140°F (PVC)
32°F to 212°F (CPVC)

SPECIFICATIONS

Connections:

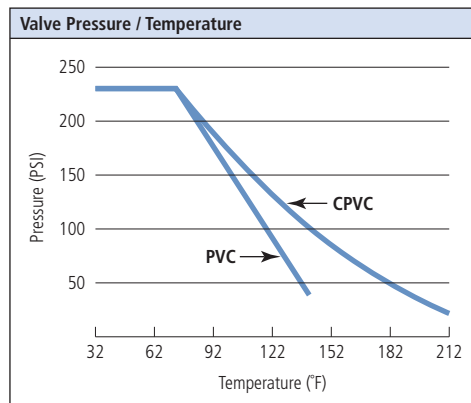
1/2" to 2" NPT threaded,
1/2" to 4" IPS socket.

Standards:

ASTM D1784, ASTM D2464,
ASTM D2466, ASTM D2467,
ASTM F437, ASTM F439,
ASTM F1498, and ANSI B1.20.1.

CV FACTORS

Size	Cv
1/2"	14.0
3/4"	27.0
1"	53.9
1-1/4"	77.0
1-1/2"	123.0
2"	238.0
2-1/2"	368.0
3"	497.0
4"	665.0



P2 Series

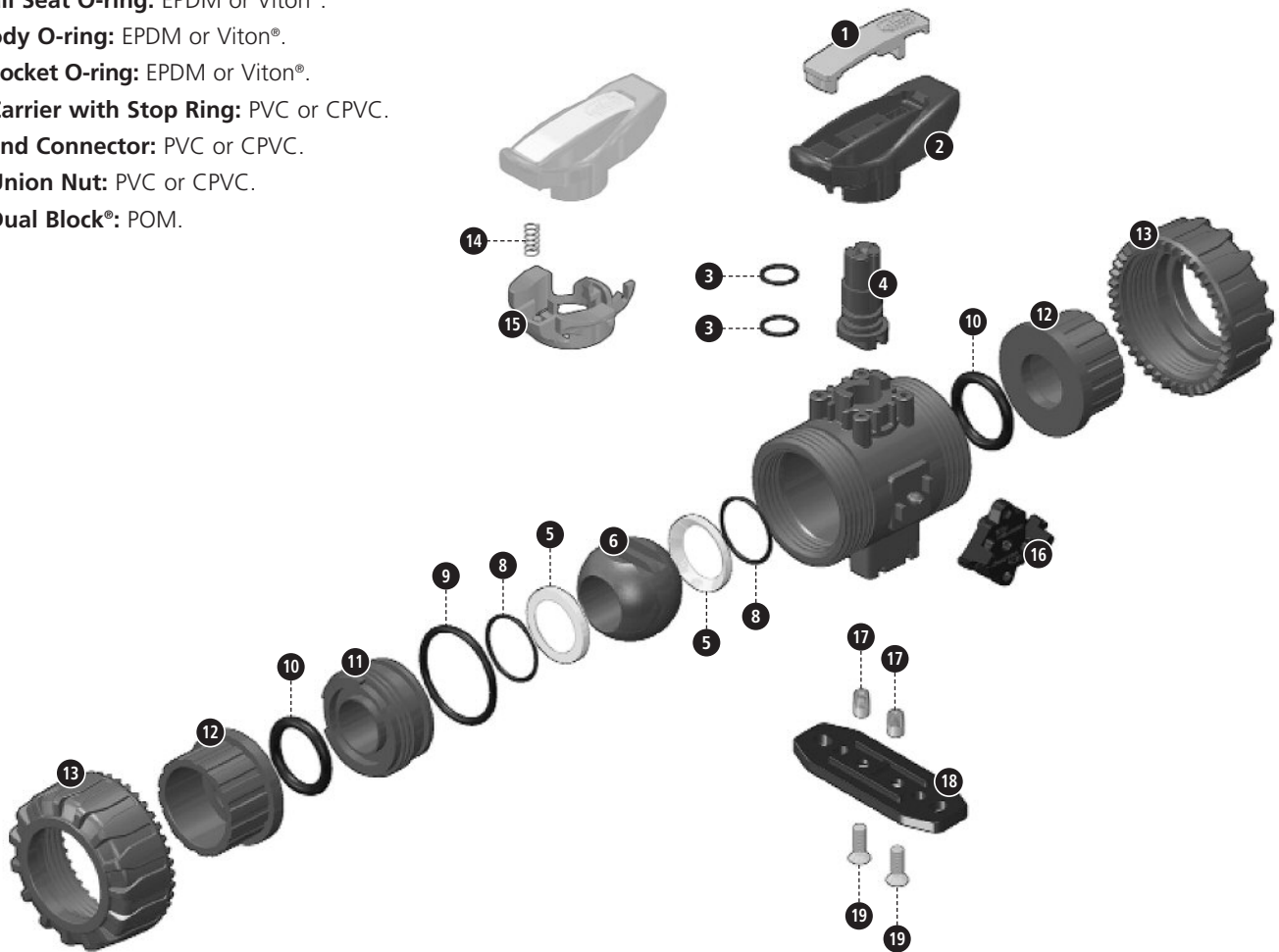
PVC / CPVC full port 2-way ball valve
(1/2" to 4" sizes available)

PARTS

- 1. Insert:** PVC or CPVC.
- 2. Handle:** PVC or CPVC.
- 3. Stem O-ring:** EPDM or Viton®.
- 4. Stem:** PVC or CPVC.
- 5. Ball Seat:** PTFE.
- 6. Ball:** PVC or CPVC.
- 7. Body:** PVC or CPVC.
- 8. Ball Seat O-ring:** EPDM or Viton®.
- 9. Body O-ring:** EPDM or Viton®.
- 10. Socket O-ring:** EPDM or Viton®.
- 11. Carrier with Stop Ring:** PVC or CPVC.
- 12. End Connector:** PVC or CPVC.
- 13. Union Nut:** PVC or CPVC.
- 14. Dual Block®:** POM.

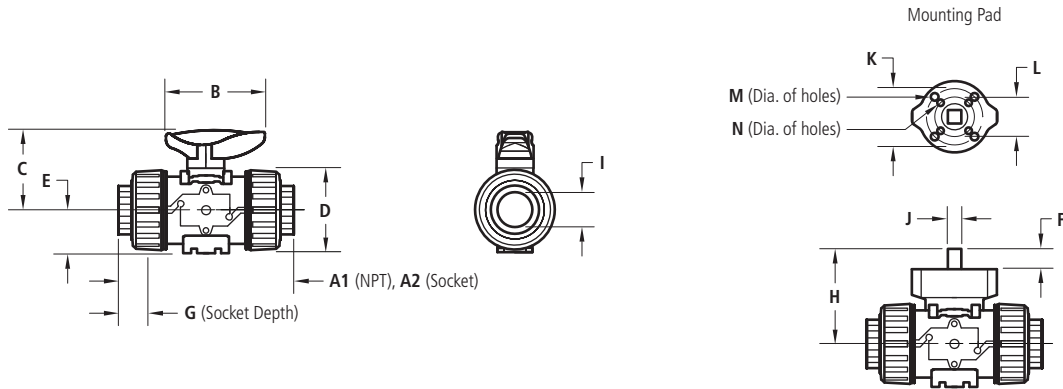
OPTIONAL ACCESSORIES

- 15. Spring:** Stainless steel.
- 16. Handle Lock:** GRPP.
- 17. Bracket Bushing:** Stainless steel or brass.
- 18. Mounting Plate:** GRPP.
- 19. Screw:** Stainless steel.



P2M Series 1/2" to 2" Sizes

PVC / CPVC full port 2-way ball valve
(NPT threaded or IPS socket end connections)



DIMENSIONS, WEIGHTS & SPECIFICATIONS

Size	A1	A2	B	C	D	E	I	G	Wt. (lbs.)	Model No.
1/2"	4.37	4.61	2.64	2.13	2.13	1.14	.84	.89	.5	CP2⊙⊙⊙M
3/4"	4.61	5.08	3.35	2.56	2.56	1.36	1.05	1.00	.8	DP2⊙⊙⊙M
1"	5.31	5.59	3.35	2.74	2.87	1.54	1.32	1.13	1.1	EP2⊙⊙⊙M
1-1/4"	6.02	6.38	4.25	3.25	3.39	1.81	1.66	1.26	1.6	FP2⊙⊙⊙M
1-1/2"	6.14	6.77	4.25	3.50	3.86	2.05	1.90	1.38	2.3	GP2⊙⊙⊙M
2"	7.32	7.83	5.28	4.25	4.80	2.44	2.38	1.50	4.0	HP2⊙⊙⊙M

⊙ Valve Material: **P** = PVC; **C** = CPVC. ⊙ Seal Material: **E** = EPDM; **V** = Viton®. ⊙ End Connection: **N** = NPT; **S** = Glued Socket.

MOUNTING DIMENSIONS & SPECIFICATIONS

Size	H	F	J	K	L	M	N
1/2"	2.28	0.47	0.43	F04	F03	0.22	0.22
3/4"	2.89	0.47	0.43	F04 / F05	F03	0.22 / 0.26	0.22
1"	2.91	0.47	0.43	F04 / F05	F03	0.22 / 0.26	0.22
1-1/4"	3.82	0.63	0.43 / 0.55	F05	F05	0.26	0.26
1-1/2"	4.09	0.63	0.43 / 0.55	F05	F05	0.26	0.26
2"	4.49	0.63	0.43 / 0.55	F07	F05	0.33	0.26

P2 VALVE FEATURES

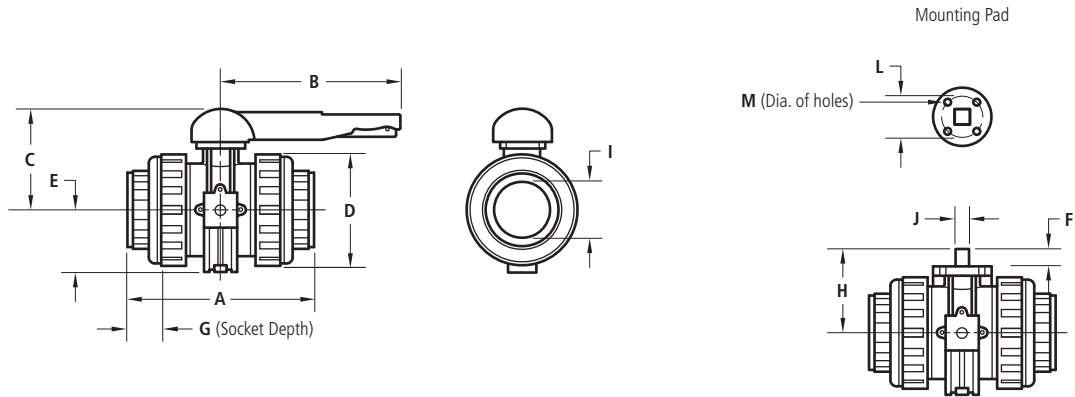
- Full port PVC/CPVC body and ball.
- Bow out proof stem.
- NPT (up to 2") and socket weld end connections.
- PTFE seals.
- Viton® or EPDM stem and body seals.
- Optional actuator mounting block.
- Pressure range: 232 PSI (at 73°F).

LEVER HANDLE FEATURES

- Locking device.

P2M Series 2-1/2" to 4" Sizes

PVC / CPVC full port 2-way ball valve
(IPS socket end connections)



DIMENSIONS, WEIGHTS & SPECIFICATIONS

Size	A	B	C	D	E	I	G	Wt. (lbs.)	Model No.
2-1/2"	9.25	6.89	2.13	2.13	6.69	2.88	1.75	10.5	IP2⊙⊙⊙M
3"	10.63	10.71	2.56	2.56	7.20	3.50	1.89	17.4	JP2⊙⊙⊙M
4"	12.13	12.99	2.74	2.87	7.91	4.50	2.26	27.0	KP2⊙⊙⊙M

⊙ Valve Material: **P** = PVC; **C** = CPVC. ⊙ Seal Material: **E** = EPDM; **V** = Viton®. ⊙ End Connection: **N** = NPT; **S** = Glued Socket.

MOUNTING DIMENSIONS & SPECIFICATIONS

Size	H	F	J	L	M
2-1/2"	4.69	0.63	0.55	F07	0.35
3"	5.20	0.63	0.55	F07	0.35
4"	5.91	0.75	0.67	F07	0.35

P2 VALVE FEATURES

- Full port PVC/CPVC body and ball.
- Bow out proof stem.
- NPT (up to 2") and socket weld end connections.
- PTFE seals.
- Viton® or EPDM stem and body seals.
- Optional actuator mounting block.
- Pressure range: 232 PSI (at 73°F).

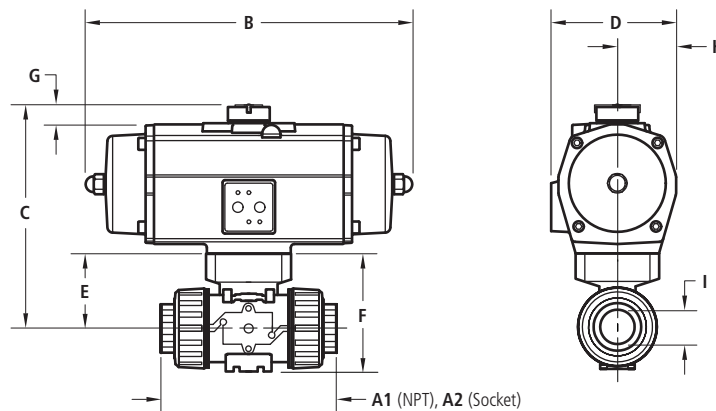
LEVER HANDLE FEATURES

- Locking device.

P2ESR Series

PVC / CPVC full port 2-way ball valve with spring return pneumatic actuator

(NPT threaded or IPS socket end connections, actuators are sized for 150 PSI pressure differential)



DIMENSIONS, WEIGHTS & SPECIFICATIONS

Size	A1	A2	B	C	D	E	F	G	H	I	Actuator	Wt. (lbs.)	Model No.
80 PSI Minimum Actuator Air Supply = 85													
1/2"	4.37	4.61	4.65	5.43	2.36	2.28	3.42	.79	1.06	.84	ES12	2.0	CP2○○○E8S
3/4"	4.61	5.08	6.77	6.83	3.26	2.89	4.25	.79	1.46	1.05	ES25	4.5	DP2○○○E8S
1"	5.31	5.59	6.77	6.85	3.26	2.91	4.45	.79	1.46	1.32	ES25	4.8	EP2○○○E8S
1-1/4"	6.02	6.38	6.77	7.76	3.26	3.82	5.63	.79	1.46	1.66	ES25	5.3	FP2○○○E8S
1-1/2"	6.14	6.77	6.77	8.03	3.26	4.09	6.14	.79	1.46	1.90	ES25	6.0	GP2○○○E8S
2"	7.32	7.83	8.03	8.94	3.78	4.49	6.93	.79	1.70	2.38	ES40	9.3	HP2○○○E8S
2-1/2"	-	9.25	9.80	11.61	4.19	6.69	10.12	.79	1.93	2.88	ES65	22.4	IP2○○○E8S
3"	-	10.63	10.51	12.12	4.60	7.20	11.33	.79	2.12	3.50	ES100	31.5	JP2○○○E8S
4"	-	12.13	14.17	14.33	5.39	7.91	12.99	.79	2.52	4.50	ES200	51.1	KP2○○○E8S
60 PSI Minimum Actuator Air Supply = 65													
1/2"	4.37	4.61	4.65	5.43	2.36	2.28	3.42	.79	1.06	.84	ES12	2.0	CP2○○○E6S
3/4"	4.61	5.08	6.77	6.83	3.26	2.89	4.25	.79	1.46	1.05	ES25	4.5	DP2○○○E6S
1"	5.31	5.59	6.77	6.85	3.26	2.91	4.45	.79	1.46	1.32	ES25	4.8	EP2○○○E6S
1-1/4"	6.02	6.38	6.77	7.76	3.26	3.82	5.63	.79	1.46	1.66	ES25	5.3	FP2○○○E6S
1-1/2"	6.14	6.77	6.77	8.03	3.26	4.09	6.14	.79	1.46	1.90	ES25	6.0	GP2○○○E6S
2"	7.32	7.83	8.03	8.94	3.78	4.49	6.93	.79	1.70	2.38	ES40	9.3	HP2○○○E6S
2-1/2"	-	9.25	10.51	12.13	4.60	6.69	10.12	.79	2.12	2.88	ES100	24.6	IP2○○○E6S
3"	-	10.63	14.17	13.62	5.39	7.20	11.33	.79	2.52	3.50	ES200	41.5	JP2○○○E6S
4"	-	12.13	14.17	14.33	5.39	7.91	12.99	.79	2.52	4.50	ES200	51.1	KP2○○○E6S

⊙ Valve Material: **P** = PVC; **C** = CPVC. ⊙ Seal Material: **E** = EPDM; **V** = Viton®. ⊙ End Connection: **N** = NPT; **S** = Glued Socket.
Note: Dimensions C, E, and F include a 2" high bracket for valve sizes 2-1/2" through 4".

P2 VALVE FEATURES

- Full port PVC/CPVC body and ball.
- Bow out proof stem.
- NPT (up to 2") and socket weld end connections.
- PTFE seals, Viton® or EPDM stem and body seals.
- Optional actuator mounting block.
- Pressure range: 232 PSI (at 73°F).

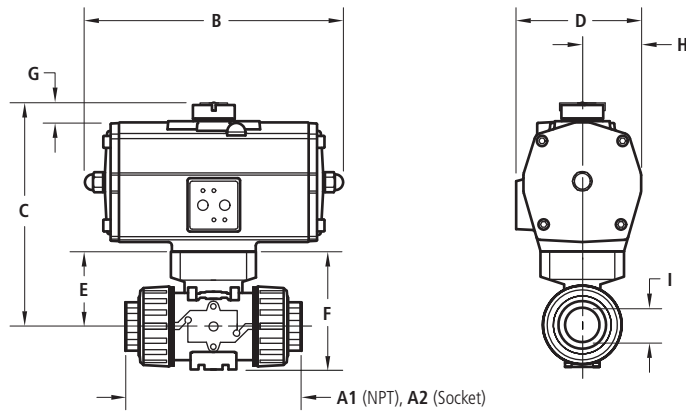
PNEUMATIC ACTUATOR FEATURES

- E Series spring return rack and pinion actuator.
- Corrosion resistant coating.
- NAMUR solenoid mounting pad, ISO 5211 mounting standard.
- Visual position indicator.
- High duty cycle, permanent lubrication.
- Temperature range: -4°F to 175°F.

P2EDA Series

PVC / CPVC full port 2-way ball valve with double acting pneumatic actuator

(NPT threaded or IPS socket end connections, actuators are sized for 150 PSI pressure differential)



DIMENSIONS, WEIGHTS & SPECIFICATIONS

Size	A1	A2	B	C	D	E	F	G	H	I	Actuator	Wt. (lbs.)	Model No.
80 PSI Minimum Actuator Air Supply = 8D													
1/2"	4.37	4.61	4.06	5.43	2.36	2.28	3.42	.79	1.06	.84	ED12	1.8	CP2○○○E8D
3/4"	4.61	5.08	6.26	6.83	3.26	2.89	4.25	.79	1.46	1.05	ED25	3.7	DP2○○○E8D
1"	5.31	5.59	6.26	6.85	3.26	2.91	4.45	.79	1.46	1.32	ED25	4.0	EP2○○○E8D
1-1/4"	6.02	6.38	6.26	7.76	3.26	3.82	5.63	.79	1.46	1.66	ED25	4.5	FP2○○○E8D
1-1/2"	6.14	6.77	6.26	8.03	3.26	4.09	6.14	.79	1.46	1.90	ED25	5.2	GP2○○○E8D
2"	7.32	7.83	7.09	8.94	3.78	4.49	6.93	.79	1.70	2.38	ED40	8.0	HP2○○○E8D
2-1/2"	-	9.25	7.83	11.61	4.19	6.69	10.12	.79	1.93	2.88	ED65	19.8	IP2○○○E8D
3"	-	10.63	7.83	12.12	4.19	7.20	11.33	.79	1.93	3.50	ED65	26.7	JP2○○○E8D
4"	-	12.13	11.14	14.33	5.39	7.91	12.99	.79	2.52	4.50	ED200	43.8	KP2○○○E8D
60 PSI Minimum Actuator Air Supply = 6D													
1/2"	4.37	4.61	4.06	5.43	2.36	2.28	3.42	.79	1.06	.84	ED12	1.8	CP2○○○E6D
3/4"	4.61	5.08	6.26	6.83	3.26	2.89	4.25	.79	1.46	1.05	ED25	3.7	DP2○○○E6D
1"	5.31	5.59	6.26	6.85	3.26	2.91	4.45	.79	1.46	1.32	ED25	4.0	EP2○○○E6D
1-1/4"	6.02	6.38	6.26	7.76	3.26	3.82	5.63	.79	1.46	1.66	ED25	4.5	FP2○○○E6D
1-1/2"	6.14	6.77	6.26	8.03	3.26	4.09	6.14	.79	1.46	1.90	ED25	5.2	GP2○○○E6D
2"	7.32	7.83	7.09	8.94	3.78	4.49	6.93	.79	1.70	2.38	ED40	8.0	HP2○○○E6D
2-1/2"	-	9.25	7.83	11.61	4.19	6.69	10.12	.79	1.93	2.88	ED65	19.8	IP2○○○E6D
3"	-	10.63	7.83	12.12	4.19	7.20	11.33	.79	1.93	3.50	ED65	26.7	JP2○○○E6D
4"	-	12.13	11.14	14.33	5.39	7.91	12.99	.79	2.52	4.50	ED200	43.8	KP2○○○E6D

○ Valve Material: **P** = PVC; **C** = CPVC. ○ Seal Material: **E** = EPDM; **V** = Viton®. ○ End Connection: **N** = NPT; **S** = Glued Socket.
Note: Dimensions C, E, and F include a 2" high bracket for valve sizes 2-1/2" through 4".

P2 VALVE FEATURES

- Full port PVC/CPVC body and ball.
- Bow out proof stem.
- NPT (up to 2") and socket weld end connections.
- PTFE seals, Viton® or EPDM stem and body seals.
- Optional actuator mounting block.
- Pressure range: 232 PSI (at 73°F).

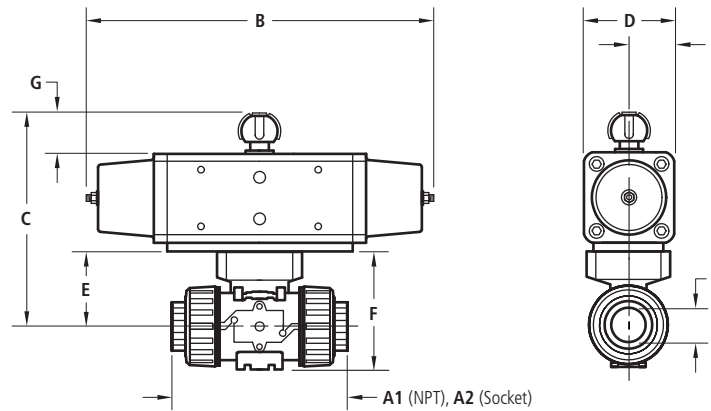
PNEUMATIC ACTUATOR FEATURES

- E Series double acting rack and pinion actuator.
- Corrosion resistant coating.
- NAMUR solenoid mounting pad, ISO 5211 mounting standard.
- Visual position indicator.
- High duty cycle, permanent lubrication.
- Temperature range: -4°F to 175°F.

P2OSR Series

PVC / CPVC full port 2-way ball valve with spring return pneumatic actuator

(NPT threaded or IPS socket end connections, actuators are sized for 150 PSI pressure differential)



DIMENSIONS, WEIGHTS & SPECIFICATIONS

Size	A1	A2	B	C	D	E	F	G	H	I	Actuator	Wt. (lbs.)	Model No.
80 PSI Minimum Actuator Air Supply = 85													
1/2"	4.37	4.61	9.45	5.82	2.56	2.28	3.42	.79	1.28	.84	PS030	5.0	CP2○○○○08S
3/4"	4.61	5.08	9.45	6.43	2.56	2.89	4.25	.79	1.28	1.05	PS030	5.2	DP2○○○○08S
1"	5.31	5.59	9.45	6.45	2.56	2.91	4.45	.79	1.28	1.32	PS030	5.5	EP2○○○○08S
1-1/4"	6.02	6.38	9.45	7.36	2.56	3.82	5.63	.79	1.28	1.66	PS030	6.1	FP2○○○○08S
1-1/2"	6.14	6.77	9.45	7.63	2.56	4.09	6.14	.79	1.28	1.90	PS030	6.7	GP2○○○○08S
2"	7.32	7.83	11.58	8.33	2.83	4.49	6.93	.79	1.41	2.38	PS045	9.3	HP2○○○○08S
2-1/2"	-	9.25	11.58	10.53	2.83	6.69	10.12	.79	1.41	2.88	PS045	19.8	IP2○○○○08S
3"	-	10.63	14.06	12.16	3.54	7.20	11.33	1.18	1.77	3.50	PS090	31.5	JP2○○○○08S
4"	-	12.13	14.65	13.26	3.94	7.91	12.99	1.18	1.97	4.50	PS120	45.7	KP2○○○○08S
60 PSI Minimum Actuator Air Supply = 65													
1/2"	4.37	4.61	9.45	5.82	2.56	2.28	3.42	.79	1.28	.84	PS030	5.0	CP2○○○○06S
3/4"	4.61	5.08	9.45	6.43	2.56	2.89	4.25	.79	1.28	1.05	PS030	5.2	DP2○○○○06S
1"	5.31	5.59	9.45	6.45	2.56	2.91	4.45	.79	1.28	1.32	PS030	5.5	EP2○○○○06S
1-1/4"	6.02	6.38	9.45	7.36	2.56	3.82	5.63	.79	1.28	1.66	PS030	6.1	FP2○○○○06S
1-1/2"	6.14	6.77	9.45	7.63	2.56	4.09	6.14	.79	1.28	1.90	PS030	6.7	GP2○○○○06S
2"	7.32	7.83	11.58	8.33	2.83	4.49	6.93	.79	1.41	2.38	PS045	9.3	HP2○○○○06S
2-1/2"	-	9.25	12.60	11.25	3.15	6.69	10.12	1.18	1.57	2.88	PS060	22.2	IP2○○○○06S
3"	-	10.63	14.06	12.16	3.54	7.20	11.33	1.18	1.77	3.50	PS090	31.5	JP2○○○○06S
4"	-	12.13	14.65	13.26	3.94	7.91	12.99	1.18	1.97	4.50	PS120	45.7	KP2○○○○06S

⊙ Valve Material: **P** = PVC; **C** = CPVC. ⊙ Seal Material: **E** = EPDM; **V** = Viton®. ⊙ End Connection: **N** = NPT; **S** = Glued Socket.
Note: Dimensions C, E, and F include a 2" high bracket for valve sizes 2-1/2" through 4".

P2 VALVE FEATURES

- Full port PVC/CPVC body and ball.
- Bow out proof stem.
- NPT (up to 2") and socket weld end connections.
- PTFE seals, Viton® or EPDM stem and body seals.
- Optional actuator mounting block.
- Pressure range: 232 PSI (at 73°F).

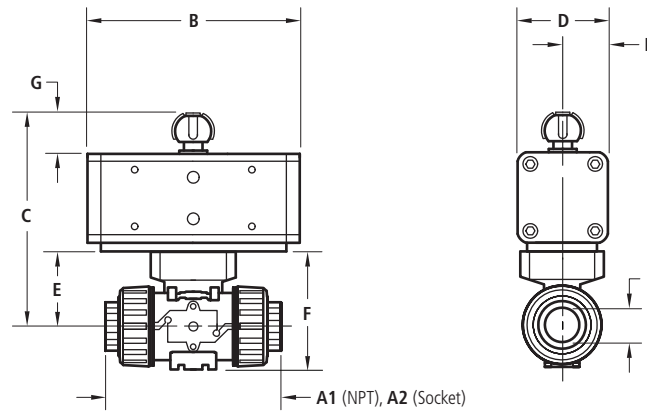
PNEUMATIC ACTUATOR FEATURES

- O Series spring return pneumatic actuator.
- Corrosion resistant coating.
- NAMUR solenoid mounting pad, ISO 5211 mounting standard.
- Visual position indicators.
- High duty cycle, permanent lubrication.
- Temperature range: -4°F to 175°F.

P2ODA Series

PVC / CPVC full port 2-way ball valve with double acting pneumatic actuator

(NPT threaded or IPS socket end connections, actuators are sized for 150 PSI pressure differential)



DIMENSIONS, WEIGHTS & SPECIFICATIONS

Size	A1	A2	B	C	D	E	F	G	H	I	Actuator	Wt. (lbs.)	Model No.
80 PSI Minimum Actuator Air Supply = 8D													
1/2"	4.37	4.61	5.67	5.65	2.36	2.28	3.42	.79	1.18	.84	PD045	3.3	CP2⊙⊙⊙08D
3/4"	4.61	5.08	5.67	6.26	2.36	2.89	4.25	.79	1.18	1.05	PD045	3.6	DP2⊙⊙⊙08D
1"	5.31	5.59	5.67	6.28	2.36	2.91	4.45	.79	1.18	1.32	PD045	3.9	EP2⊙⊙⊙08D
1-1/4"	6.02	6.38	5.67	7.19	2.36	3.82	5.63	.79	1.18	1.66	PD045	4.4	FP2⊙⊙⊙08D
1-1/2"	6.14	6.77	5.67	7.46	2.36	4.09	6.14	.79	1.18	1.90	PD045	5.1	GP2⊙⊙⊙08D
2"	7.32	7.83	6.65	8.03	2.83	4.49	6.93	.79	1.41	2.38	PD090	8.1	HP2⊙⊙⊙08D
2-1/2"	-	9.25	6.65	10.53	2.83	6.69	10.12	.79	1.41	2.88	PD090	18.6	IP2⊙⊙⊙08D
3"	-	10.63	6.65	11.04	2.83	7.20	11.33	.79	1.41	3.50	PD090	25.5	JP2⊙⊙⊙08D
4"	-	12.13	8.35	12.87	3.54	7.91	12.99	1.18	1.77	4.50	PD180	38.5	KP2⊙⊙⊙08D
60 PSI Minimum Actuator Air Supply = 6D													
1/2"	4.37	4.61	5.67	5.65	2.36	2.28	3.42	.79	1.18	.84	PD045	3.3	CP2⊙⊙⊙06D
3/4"	4.61	5.08	5.67	6.26	2.36	2.89	4.25	.79	1.18	1.05	PD045	3.6	DP2⊙⊙⊙06D
1"	5.31	5.59	5.67	6.28	2.36	2.91	4.45	.79	1.18	1.32	PD045	3.9	EP2⊙⊙⊙06D
1-1/4"	6.02	6.38	5.67	7.19	2.36	3.82	5.63	.79	1.18	1.66	PD045	4.4	FP2⊙⊙⊙06D
1-1/2"	6.14	6.77	5.67	7.46	2.36	4.09	6.14	.79	1.18	1.90	PD045	5.1	GP2⊙⊙⊙06D
2"	7.32	7.83	6.65	8.03	2.83	4.49	6.93	.79	1.41	2.38	PD090	8.1	HP2⊙⊙⊙06D
2-1/2"	-	9.25	6.65	10.53	2.83	6.69	10.12	.79	1.41	2.88	PD090	18.6	IP2⊙⊙⊙06D
3"	-	10.63	6.65	11.04	2.83	7.20	11.33	.79	1.41	3.50	PD090	25.5	JP2⊙⊙⊙06D
4"	-	12.13	8.35	12.87	3.54	7.91	12.99	1.18	1.77	4.50	PD180	38.5	KP2⊙⊙⊙06D

⊙ Valve Material: **P** = PVC; **C** = CPVC. ⊙ Seal Material: **E** = EPDM; **V** = Viton®. ⊙ End Connection: **N** = NPT; **S** = Glued Socket.
Note: Dimensions C, E, and F include a 2" high bracket for valve sizes 2-1/2" through 4".

P2 VALVE FEATURES

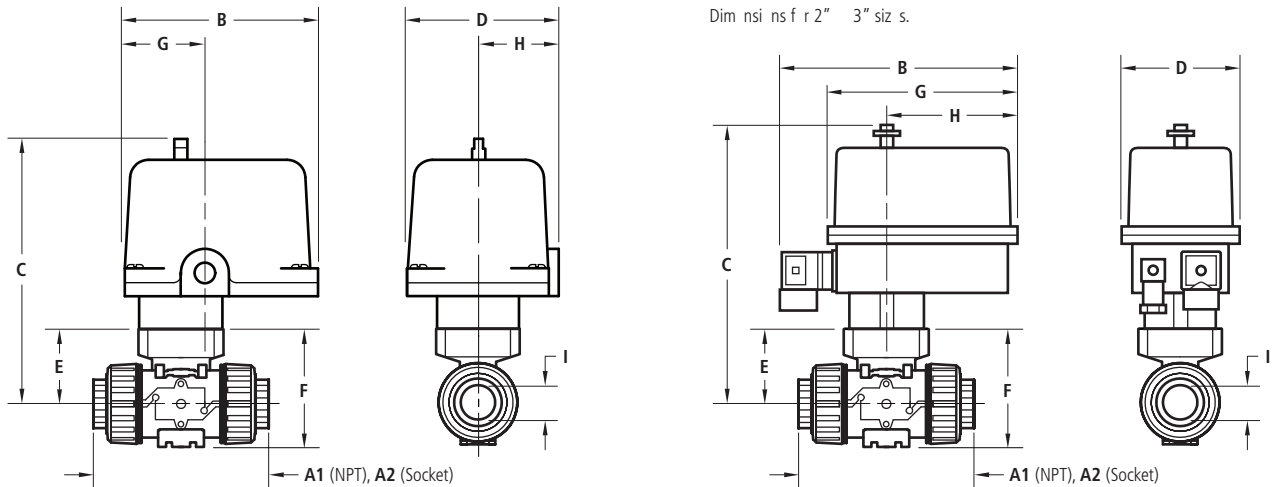
- Full port PVC/CPVC body and ball.
- Bow out proof stem.
- NPT (up to 2") and socket weld end connections.
- PTFE seals, Viton® or EPDM stem and body seals.
- Optional actuator mounting block.
- Pressure range: 232 PSI (at 73°F).

PNEUMATIC ACTUATOR FEATURES

- O Series double acting pneumatic actuator.
- Corrosion resistant coating.
- NAMUR solenoid mounting pad, ISO 5211 mounting standard.
- Visual position indicators.
- High duty cycle, permanent lubrication.
- Temperature range: -4°F to 175°F.

P2R4 Series

PVC / CPVC full port 2-way ball valve with electric actuator, NEMA 4, 4X
(NPT threaded or IPS socket end connections, actuators are sized for 150 PSI pressure differential)



DIMENSIONS, WEIGHTS & SPECIFICATIONS

Size	A1	A2	B	C	D	E	F	G	H	I	Actuator	Wt. (lbs.)	Model No.
1/2"	4.37	4.61	9.75	11.72	3.88	2.28	3.42	7.75	3.75	.84	RM150	4.5	CP2⊙⊙⊙R4⊙
3/4"	4.61	5.08	9.75	12.33	3.88	2.89	4.25	7.75	3.75	1.05	RM150	4.8	DP2⊙⊙⊙R4⊙
1"	5.31	5.59	9.75	12.35	3.88	2.91	4.45	7.75	3.75	1.32	RM150	5.1	EP2⊙⊙⊙R4⊙
1-1/4"	6.02	6.38	9.75	13.26	3.88	3.82	5.63	7.75	3.75	1.66	RM150	5.6	FP2⊙⊙⊙R4⊙
1-1/2"	6.14	6.77	9.75	13.53	3.88	4.09	6.14	7.75	3.75	1.90	RM150	6.3	GP2⊙⊙⊙R4⊙
2"	7.32	7.83	5.95	10.54	4.73	4.49	6.93	2.48	2.20	2.38	R300	10.0	HP2⊙⊙⊙R4⊙
2-1/2"	-	9.25	5.95	12.74	4.73	6.69	10.12	2.48	2.20	2.88	R300	20.5	IP2⊙⊙⊙R4⊙
3"	-	10.63	5.95	13.25	4.73	7.20	11.33	2.48	2.20	3.50	R600	27.4	JP2⊙⊙⊙R4⊙

⊙ Valve Material: **P** = PVC; **C** = CPVC. ⊙ Seal Material: **E** = EPDM; **V** = Viton®. ⊙ End Connection: **N** = NPT; **S** = Glued Socket. ⊙ Voltage: **A** = 120 VAC; **B** = 24 VDC; **F** = 12 VDC.

P2 VALVE FEATURES

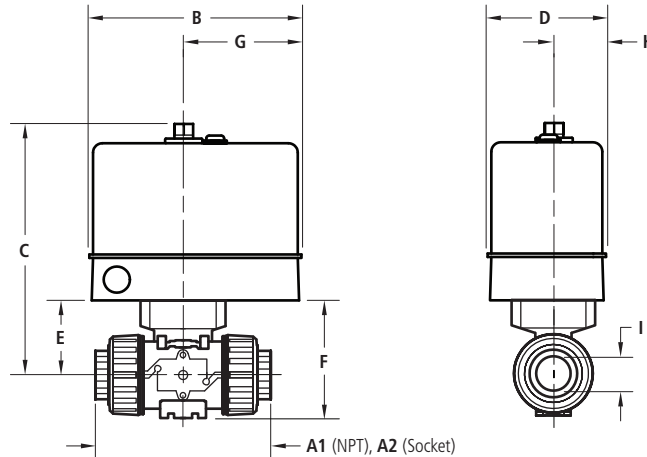
- Full port PVC/CPVC body and ball.
- Bow out proof stem.
- NPT (up to 2") and socket weld end connections.
- PTFE seals.
- Viton® or EPDM stem and body seals.
- Optional actuator mounting block.
- Pressure range: 232 PSI (at 73°F).

ELECTRIC ACTUATOR FEATURES

- R Series electric actuator.
- NEMA 4, 4X.
- Voltages available: 120 VAC, 12 VDC, 24 VDC.
- Duty cycle: 25% at 120 VAC, 100% at DC units.
- ISO 5211 universal mounting.
- Manual override.
- Permanent lubrication.
- Visual position indicator.
- Temperature range: 0°F to 150°F.

P2V4 Series

PVC / CPVC full port 2-way ball valve with electric actuator, NEMA 4, 4X
(NPT threaded or IPS socket end connections, actuators are sized for 150 PSI pressure differential)



DIMENSIONS, WEIGHTS & SPECIFICATIONS

Size	A1	A2	B	C	D	E	F	G	H	I	Actuator	Wt. (lbs.)	Model No.
1/2"	4.37	4.61	5.50	6.51	3.00	2.28	3.42	3.06	1.38	.84	EV1S1V1	5.5	CP2⊙⊙⊙V4⊙
3/4"	4.61	5.08	5.50	7.12	3.00	2.89	4.25	3.06	1.38	1.05	EV1S1V1	5.8	DP2⊙⊙⊙V4⊙
1"	5.31	5.59	5.50	7.14	3.00	2.91	4.45	3.06	1.38	1.32	EV1S1V1	6.1	EP2⊙⊙⊙V4⊙
1-1/4"	6.02	6.38	5.50	8.05	3.00	3.82	5.63	3.06	1.38	1.66	EV1S1V1	6.6	FP2⊙⊙⊙V4⊙
1-1/2"	6.14	6.77	5.50	8.32	3.00	4.09	6.14	3.06	1.38	1.90	EV1S1V1	7.3	GP2⊙⊙⊙V4⊙
2"	7.32	7.83	5.50	8.72	3.00	4.49	6.93	3.06	1.38	2.38	EV3S2V1	9.0	HP2⊙⊙⊙V4⊙

⊙ Valve Material: **P** = PVC; **C** = CPVC. ⊙ Seal Material: **E** = EPDM; **V** = Viton®. ⊙ End Connection: **N** = NPT; **S** = Glued Socket. ⊙ Voltage: **A** = 120 VAC; **B** = 24 VDC.

P2 VALVE FEATURES

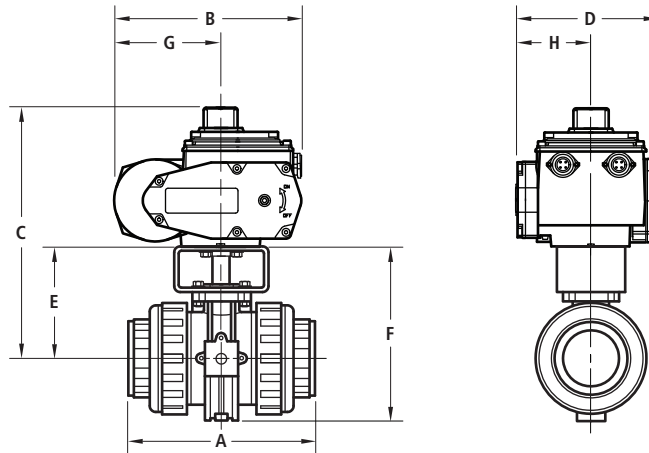
- Full port PVC/CPVC body and ball.
- Bow out proof stem.
- NPT (up to 2") and socket weld end connections.
- PTFE seals.
- Viton® or EPDM stem and body seals.
- Optional actuator mounting block.
- Pressure range: 232 PSI (at 73°F).

ELECTRIC ACTUATOR FEATURES

- V Series electric actuator.
- NEMA 4, 4X.
- Voltages available: 120 VAC, 220 VAC, 24 VAC, 12 VDC, 24VDC.
- Duty cycle: 25% at 120 VAC (EV1), 75% at 120 VAC (EV3, NV6), 100% at DC units.
- ISO 5211 universal mounting.
- Manual override.
- Permanent lubrication.
- Visual position indicator.
- Temperature range: 0°F to 160°F.

P2I4 Series

PVC / CPVC full port 2-way ball valve with electric actuator, NEMA 4, 4X
(NPT threaded or IPS socket end connections, actuators are sized for 150 PSI pressure differential)



DIMENSIONS, WEIGHTS & SPECIFICATIONS

Size	A	B	C	D	E	F	G	I	Actuator	Wt. (lbs.)	Model No.
2-1/2"	9.25	7.56	12.09	5.20	6.69	10.12	2.21	2.88	I40300	22.4	IP2⊙⊙⊙I4⊙
3"	10.63	7.56	02.60	5.36	7.20	11.33	2.37	3.50	I40600	29.3	JP2⊙⊙⊙I4⊙
4"	12.13	8.73	13.31	6.30	7.91	12.99	3.31	4.50	I41150	38.9	KP2⊙⊙⊙I4⊙

⊙ Valve Material: **P** = PVC; **C** = CPVC. ⊙ Seal Material: **E** = EPDM; **V** = Viton®. ⊙ End Connection: **N** = NPT; **S** = Glued Socket. ⊙ Voltage: **A** = 120 VAC; **B** = 24 VDC.
Note: Dimensions C, E, and F include a 2" high bracket for valve sizes 2-1/2" through 4".

P2 VALVE FEATURES

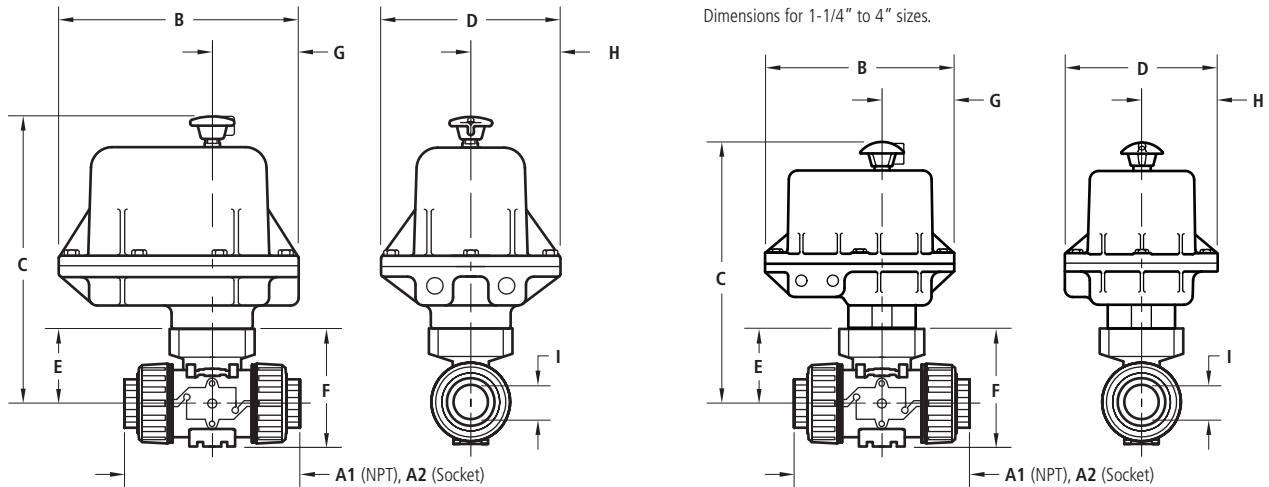
- Full port PVC/CPVC body and ball.
- Bow out proof stem.
- NPT (up to 2") and socket weld end connections.
- PTFE seals.
- Viton® or EPDM stem and body seals.
- Optional actuator mounting block.
- Pressure range: 232 PSI (at 73°F).

ELECTRIC ACTUATOR FEATURES

- I4 Series electric actuator.
- Weatherproof enclosure IP65.
- Voltages available: 115 VAC, 24 VAC/VDC.
- Duty cycle: 50%.
- IP65 electrical connectors.
- Space heater.
- Extra (2) SPDT adjustable limit switches.
- Temperature range: 0°F to 140°F.

P2B7 Series

PVC / CPVC full port 2-way ball valve with explosion proof electric actuator, NEMA 7, 120 VAC (NPT threaded or IPS socket end connections, actuators are sized for 150 PSI pressure differential)



DIMENSIONS, WEIGHTS & SPECIFICATIONS

Size	A1	A2	B	C	D	E	F	G	H	I	Actuator	Wt. (lbs.)	Model No.
1/2"	4.37	4.61	8.25	9.78	6.25	2.28	3.42	3.75	3.12	.84	EM300_4	18.5	CP2○○○B7
3/4"	4.61	5.08	8.25	10.39	6.25	2.89	4.25	3.75	3.12	1.05	EM300_4	18.8	DP2○○○B7
1"	5.31	5.59	8.25	10.41	6.25	2.91	4.45	3.75	3.12	1.32	EM300_4	19.1	EP2○○○B7
1-1/4"	6.02	6.38	9.25	13.26	7.75	3.82	5.63	3.75	3.88	1.66	EM500_5	19.6	FP2○○○B7
1-1/2"	6.14	6.77	9.25	13.53	7.75	4.09	6.14	3.75	3.88	1.90	EM500_5	20.3	GP2○○○B7
2"	7.32	7.83	9.25	13.93	7.75	4.49	6.93	3.75	3.88	2.38	EM500_5	22.0	HP2○○○B7
2-1/2"	-	9.25	9.25	16.13	7.75	6.69	10.12	3.75	3.88	2.88	EM500_5	32.5	IP2○○○B7
3"	-	10.63	9.25	16.64	7.75	7.20	11.33	3.75	3.88	3.50	EM510_5	39.4	JP2○○○B7
4"	-	12.13	9.25	17.35	7.75	7.91	12.99	3.75	3.88	4.50	EM510_5	49.0	KP2○○○B7

○ Valve Material: **P** = PVC; **C** = CPVC. ○ Seal Material: **E** = EPDM; **V** = Viton®. ○ End Connection: **N** = NPT; **S** = Glued Socket.
Note: Dimensions C, E, and F include a 2" high bracket for valve sizes 2-1/2" through 4".

P2 VALVE FEATURES

- Full port PVC/CPVC body and ball.
- Bow out proof stem.
- NPT (up to 2") and socket weld end connections.
- PTFE seals.
- Viton® or EPDM stem and body seals.
- Optional actuator mounting block.
- Pressure range: 232 PSI (at 73°F).

ELECTRIC ACTUATOR FEATURES

- B7 Series electric actuator.
- Actuator speed: 15 sec.
- NEMA 4, 7 and 9; CSA approved.
- Weatherproof.
- Class I Groups C and D, Div. 1.
- Class II Groups E, F and G.
- (2) 1/2" NPT conduit entries.
- Manual override.
- Visual position indicator.
- CSA certified.
- Temperature range: 0°F to 160°F.