

O Series

Pneumatic Actuator



The Assured Automation O Series pneumatic actuators offer a simple and cost effective solution for your valve automation needs. For use on quarter turn (90°) ball valves, plug valves, dampers, and resilient seated butterfly valves.

FEATURES

- High duty cycle life, up to 1,000,000 cycles.
- Double acting and spring return models.
- Direct mounting to ball and butterfly valves: DIN/ISO 5211, DIN 3337 (F03 to F16).
- NAMUR solenoid and limit switch mounting.
- Diamond and square output drive on all units.
- Permanent lubrication.
- Corrosion resistant coating.
- Visual position indicator (Open/Closed).

MATERIALS OF CONSTRUCTION

Housing:

Aluminum alloy.

End Caps:

Painted aluminum alloy.

ACCESSORIES

Solenoids:

NAMUR mount (voltages of 12 to 24 VDC, 24 to 220 VAC), NEMA-4, NEMA-7, intrinsically safe.

Limit Switches:

Mechanical, proximity, ASI, fieldbus; visual open and close indication.

Positioners:

Pneumatic (3 to 15 PSI control); electropneumatic (4 to 20 mA control).

O SERIES MODEL NUMBERING

Model Number: _____

Type: _____
D = Direct Acting
S = Spring Return

Size: _____
 (see Torque table, pg. 2)

008 to 3840

Fail Position: _____
 (spring return models only)
 (omit) = Fail Closed (standard)
FO = Fail Open



TEMPERATURE RANGE

-4°F to 175°F (with dry air)

SPECIFICATIONS

Supply Pressure:

20 to 120 PSI (direct acting),
40 to 120 PSI (spring return).

Output Torque:

60 to 25,600 in./lb. at 80 PSI supply pressure.

Control Media:

Dry, filtered compressed air, not necessarily lubricated.

In case of lubricated air, either non-detergent oil or NBR compatible oil must be used.

O Series

Pneumatic Actuator

(Double acting or spring return)

TORQUE SPECIFICATIONS, SPRING RETURN

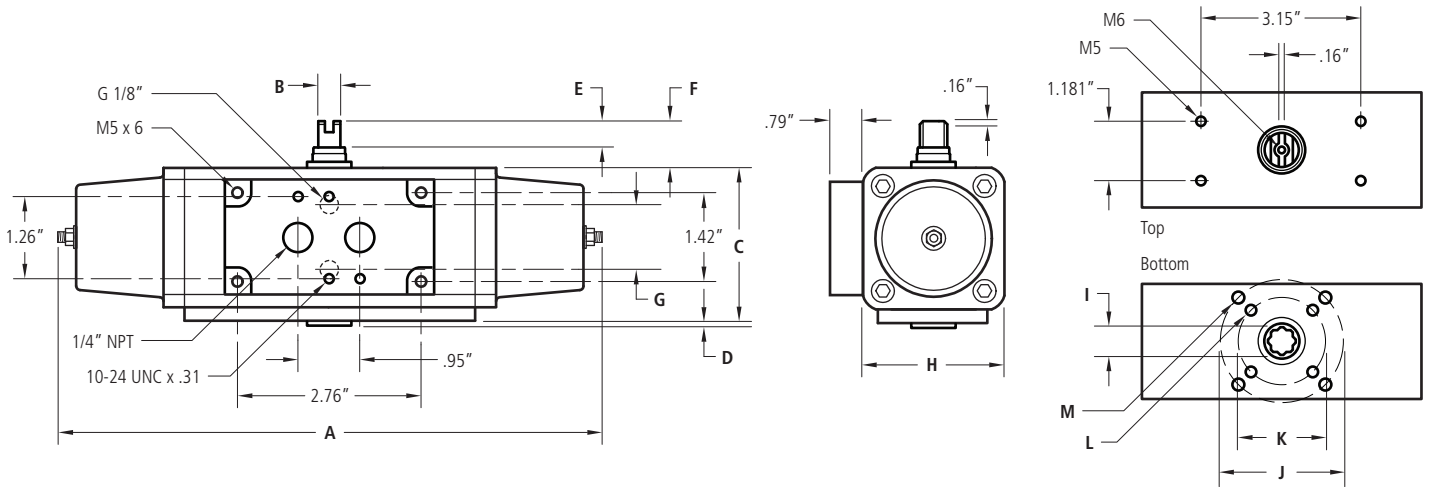
Actuator Size	Angle	Air Supply: 60 PSI		Air Supply: 80 PSI		Model No.
		Air Stroke	Spring Stroke	Air Stroke	Spring Stroke	
015	0°	100.0	66.4	132.8	88.5	PS015
	50°	49.6	49.6	66.4	66.4	
	90°	66.4	100.0	88.5	132.8	
030	0°	199.1	132.8	265.5	177.0	PS030
	50°	100.0	100.0	132.8	132.8	
	90°	132.8	199.1	177.0	265.5	
045	0°	300.0	199.1	398.3	265.5	PS045
	50°	148.7	148.7	199.1	199.1	
	90°	199.1	300.0	265.5	398.3	
060	0°	398.3	265.5	531.1	354.0	PS060
	50°	199.1	199.1	265.5	265.5	
	90°	265.5	398.3	354.0	531.1	
090	0°	597.4	398.3	796.6	531.1	PS090
	50°	300.0	300.0	398.3	398.3	
	90°	398.3	597.4	531.1	796.6	
120	0°	796.6	531.1	1,062.1	708.1	PS120
	50°	398.3	398.3	531.1	531.1	
	90°	531.1	796.6	708.1	1,062.1	
180	0°	1,194.9	796.6	1,593.2	1,062.1	PS180
	50°	597.4	597.4	796.6	796.6	
	90°	796.6	1,194.9	1,062.1	1,593.2	
240	0°	1,593.2	1,062.1	2,124.2	1,416.2	PS240
	50°	796.6	796.6	1,062.1	1,062.1	
	90°	1,062.1	1,593.2	1,416.2	2,124.2	
360	0°	2,389.8	1,593.2	3,186.4	2,124.2	PS360
	50°	1,194.4	1,194.9	1,593.2	1,593.2	
	90°	1,593.2	2,389.8	2,124.2	3,186.4	
480	0°	3,186.4	2,124.2	4,248.5	2,832.3	PS480
	50°	1,593.2	1,593.2	2,124.4	2,124.2	
	90°	2,124.2	3,186.4	2,832.3	4,248.5	
720	0°	4,779.5	3,186.4	6,372.7	4,248.5	PS720
	50°	2,389.8	2,389.8	3,186.4	3,186.4	
	90°	3,186.4	4,779.5	4,248.5	6,372.7	
960	0°	6,372.7	4,248.5	8,497.0	5,664.6	PS960
	50°	3,186.4	3,186.4	4,248.5	4,248.5	
	90°	4,248.5	6,372.7	5,664.6	8,497.0	
1920	0°	12,745.4	8,497.0	16,993.9	11,329.3	PS1920
	50°	6,372.7	6,372.7	8,497.0	8,497.0	
	90°	8,497.0	12,745.4	11,329.3	16,993.9	

TORQUE SPECIFICATIONS, DOUBLE ACTING

Actuator Size	Angle	Air Supply: 60 PSI	Air Supply: 80 PSI	Model No.
008	0°	50.5	70.8	PD008
	50°	24.8	35.4	
	90°	50.5	70.8	
015	0°	94.7	132.8	PD015
	50°	47.8	66.4	
	90°	71.7	100.0	
030	0°	189.4	265.5	PD030
	50°	94.7	132.8	
	90°	142.5	199.1	
045	0°	284.1	398.3	PD045
	50°	143.4	199.1	
	90°	215.1	300.9	
060	0°	379.7	531.1	PD060
	50°	189.4	265.5	
	90°	284.1	398.3	
090	0°	568.2	796.6	PD090
	50°	286.8	398.3	
	90°	430.2	601.9	
120	0°	758.5	1,062.1	PD120
	50°	379.7	531.1	
	90°	569.1	796.6	
180	0°	1,136.5	1,593.2	PD180
	50°	573.5	796.6	
	90°	860.3	1,194.9	
240	0°	1,517.1	2,124.2	PD240
	50°	758.5	1,062.1	
	90°	1,138.2	1,593.2	
360	0°	2,272.9	3,186.4	PD360
	50°	1,147.1	1,593.2	
	90°	1,720.6	2,389.8	
480	0°	3,035.0	4,248.5	PD480
	50°	1,517.1	2,124.2	
	90°	2,275.6	3,186.4	
720	0°	4,545.9	6,372.7	PD720
	50°	2,294.2	3,186.4	
	90°	3,441.3	4,779.5	
960	0°	6,069.1	8,497.0	PD960
	50°	3,035.0	4,248.5	
	90°	4,552.1	6,372.7	
1440	0°	9,091.7	12,745.4	PD1440
	50°	4,588.4	6,372.7	
	90°	6,882.5	9,559.1	
1920	0°	12,138.3	16,993.9	PD1920
	50°	6,070.0	8,497.0	
	90°	9,104.1	12,745.4	
3840	0°	25,136.8	33,987.8	PD3840
	50°	12,125.9	16,993.9	
	90°	18,188.8	25,490.9	

O Series

Pneumatic Actuator (Spring return)

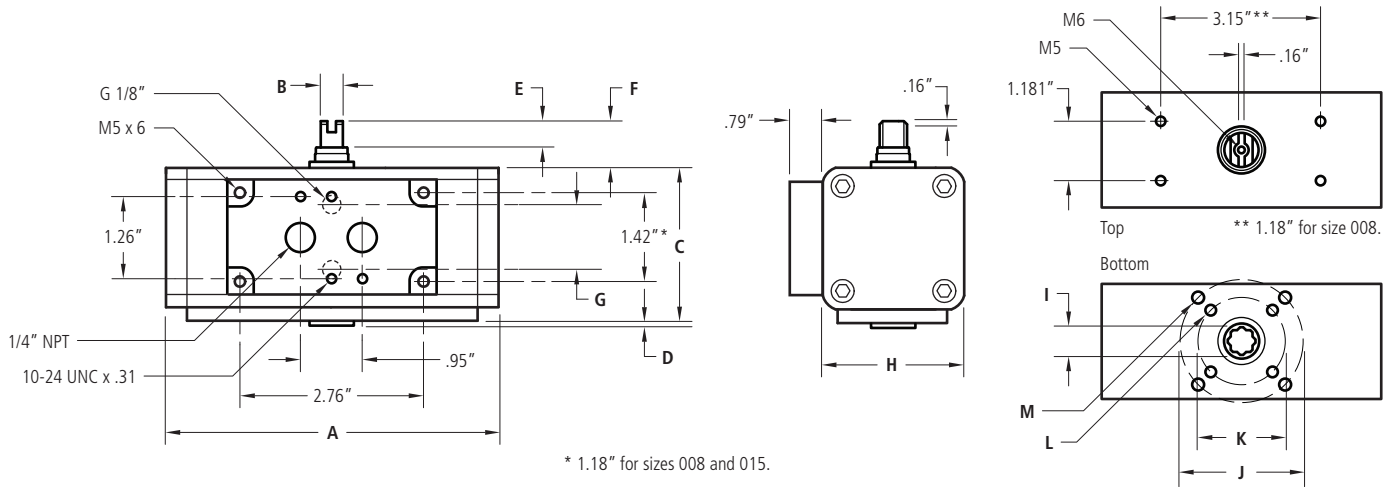


DIMENSIONS, WEIGHTS & SPECIFICATIONS

Actuator Size	ISO	A	B	C	D	E	F	G	H	I	J	K	L	M	Wt. (lbs.)	Model No.
015	F03, F05	8.70	.35	2.36	.08	.39	.79	.98	2.17	.35	1.97	1.42	M5 x 9	M6 x 11	2.87	PS015
030	F04	9.45	.39	2.76	.08	.51	.79	.81	2.56	.43	-	1.65	M5 x 9	-	4.41	PS030
	F03, F05	9.45	.39	2.76	.08	.51	.79	.81	2.56	.43	1.97	1.42	M5 x 9	M6 x 11	4.41	
045	F05, F07	11.57	.47	3.05	.12	.51	.79	.81	2.83	.55	-	1.97	M6 x 11	-	5.29	PS045
060	F05, F07	12.60	.47	3.39	.12	.51	1.18	.98	3.15	.55	2.76	1.97	M6 x 11	M8 x 15	7.72	PS060
090	F05, F07	14.06	.59	3.78	.12	.63	1.18	.98	3.54	.67	2.76	1.97	M6 x 11	M8 x 15	10.14	PS090
120	F05, F07	14.65	.59	4.17	.12	.67	1.18	.98	3.94	.67	2.76	1.97	M6 x 11	M8 x 15	14.77	PS120
180	F07, F10	17.17	.75	4.65	.12	.75	1.18	.98	4.41	.87	4.02	2.76	M8 x 15	M10 x 17	20.72	PS180

O Series

Pneumatic Actuator (Double acting)



DIMENSIONS, WEIGHTS & SPECIFICATIONS

Actuator Size	ISO	A	B	C	D	E	F	G	H	I	J	K	L	M	Wt. (lbs.)	Model No.
008	F03	2.76	.31	1.68	.08	.31	.59	.91	1.70	.35	-	.98	M5 x 8	-	.64	PD008
015	F03	4.53	.31	2.05	.08	.39	.79	.81	1.89	.35	-	.98	-	-	1.61	PD015
030	F03, F05	5.12	.35	2.36	.08	.39	.79	.98	2.17	.35	1.97	.98, 1.38	M5 x 9	M6 x 11	2.20	PD030
	F04	5.67	.39	2.59	.08	.51	.79	.98	2.36	.43	-	1.18	M5 x 9	-	2.76	PD045
045	F03, F05	5.67	.39	2.59	.08	.51	.79	.98	2.36	.43	1.97	.98, 1.38	M5 x 9	M6 x 11	2.76	PD045
	F04	5.98	.39	2.76	.08	.51	.79	.81	2.56	.43	-	1.18	M5 x 9	-	3.44	PD060
060	F03, F05	5.98	.39	2.76	.08	.51	.79	.81	2.56	.43	1.97	.98, 1.38	M5 x 9	M6 x 11	3.44	PD060
	F04	5.98	.39	2.76	.08	.51	.79	.81	2.56	.43	-	1.18	M5 x 9	-	3.44	PD060
090	F05, F07	6.65	.47	3.05	.12	.51	.79	.81	2.83	.55	2.76	1.38, 2.17	M6 x 11	-	4.08	PD090
120	F05, F07	7.24	.47	3.39	.12	.51	1.18	.98	3.15	.55	2.76	1.38, 2.17	M6 x 11	M8 x 15	6.17	PD120
180	F05, F07	8.35	.59	3.78	.12	.63	1.18	.98	3.54	.67	2.76	1.38, 2.17	M6 x 11	M8 x 15	7.50	PD180
240	F05, F07	9.53	.59	4.17	.12	.67	1.18	.98	3.94	.67	2.76	1.38, 2.17	M6 x 11	M8 x 15	11.68	PD240
360	F07, F10	10.39	.75	4.65	.12	.75	1.18	.98	4.41	.87	4.02	2.17, 2.76	M8 x 15	M10 x 17	15.87	PD360