

150F & 300F Series

Full Port Two-Piece Ball Valve



Assured Automation's 150F and 300F series ball valves offer a unique design that is ideal for process and petrochemical applications.

FEATURES

- Floating ball and protected seat design.
- O-ring backed seat.
- Fire safe designed to API 607-5.
- Spiral wound body gasket with secondary metal to metal seal.
- Open and close locking device for position safety lockout on manual valves.
- O-ring reinforced stem packing.

MATERIALS OF CONSTRUCTION

Body:

Stainless steel or carbon steel.

Seats:

TFM.

MAXIMUM PRESSURE

Class 150:

Body: 275 PSI

Class 300:

Body: 700 PSI

MAXIMUM TEMPERATURE

475°F

ACTUATOR CONFIGURATIONS

- Electric.
- Pneumatic (spring return).
- Pneumatic (double acting).
- Manual handle.

SPECIFICATIONS

Connections:

1/2" to 12" flanged.

Cv FACTORS & MAX. OPERATING TORQUES

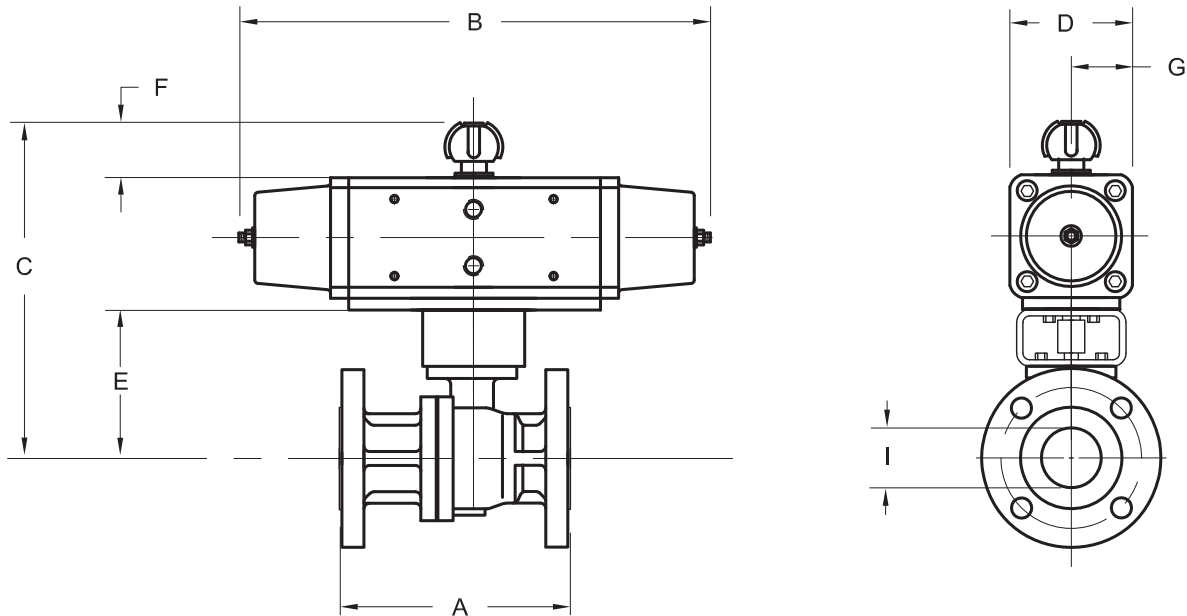
Size	Cv	Torque (in/lb) TFM Seats
Class 150:		
1/2"	17	62
3/4"	43	90
1"	74	100
1-1/4"	192	240
1-1/2"	290	270
2"	410	360
2-1/2"	780	620
3"	1,120	800
4"	1,825	1,700
6"	4,700	4,600
8"	10,100	9,900
10"	17,500	17,000
12"	22,400	23,000
Class 300:		
1/2"	15	65
3/4"	40	95
1"	70	105
1-1/4"	189	252
1-1/2"	300	284
2"	430	378
2-1/2"	768	651
3"	1,090	840
4"	1,900	1,785
6"	4,800	4,830
8"	10,000	10,395
10"	17,350	17,850
12"	21,700	24,150

150F_F OSR .5 - 2

Full port ball valve with spring return pneumatic actuator

150# Flanged 2-pc body TFM Seats

Actuators are sized for 150 psi pressure differential



DIMENSIONS, WEIGHTS & SPECIFICATIONS

Size	A	B	C	D	E	F	G	I	Actuator	Wt.(lbs.)	Model No.
80 psig Minimum Actuator Air Supply = 8S											
1/2"	4.25	8.71	7.77	2.17	4.54	.79	1.08	.59	PS015	9.4	C150F * F O8S ①
3/4"	4.62	9.45	8.24	2.56	4.70	.79	1.28	.79	PS030	14.4	D150F * F O8S ①
1"	5.00	9.45	8.60	2.56	5.06	.79	1.28	.98	PS030	16.9	E150F * F O8S ①
1-1/2"	6.50	12.60	10.21	3.15	5.65	1.18	1.57	1.50	PS060	27.2	G150F * F O8S ①
2"	7.00	14.06	10.86	3.54	5.90	1.18	1.77	1.97	PS090	36.1	H150F * F O8S ①
60 psig Minimum Actuator Air Supply = 6S											
1/2"	4.25	9.45	8.08	2.56	4.54	.79	1.28	.59	PS030	13.4	C150F * F O6S ①
3/4"	4.62	9.45	8.24	2.56	4.70	.79	1.28	.79	PS030	14.4	D150F * F O6S ①
1"	5.00	9.45	8.60	2.56	5.06	.79	1.28	.98	PS030	16.9	E150F * F O6S ①
1-1/2"	6.50	14.06	10.61	3.54	5.65	1.18	1.77	1.50	PS090	29.6	G150F * F O6S ①
2"	7.00	14.06	10.86	3.54	5.90	1.18	1.77	1.97	PS090	36.1	H150F * F O6S ①

Note: Dimensions "C" & "E" include a 3" high mounting bracket

*C = Carbon Stl Body, 316SS Trim

*S = 316SS Body & Trim

① C=Fail Close, O=Fail Open

150 VALVE SPECIFICATIONS

- 150F Class 150
- Standard Steam Working Pressure: 150SWP, optional 300PSIG
- Protected Seat Design
- Fire Safe Designed to API607-5
- Spiral Wound Body Gasket w/Secondary metal to metal seat
- Carbon Steel or Stainless Steel Body
- Seats: TFM
- Max Temp: TFM seats: 475°F

PNEUMATIC ACTUATOR FEATURES

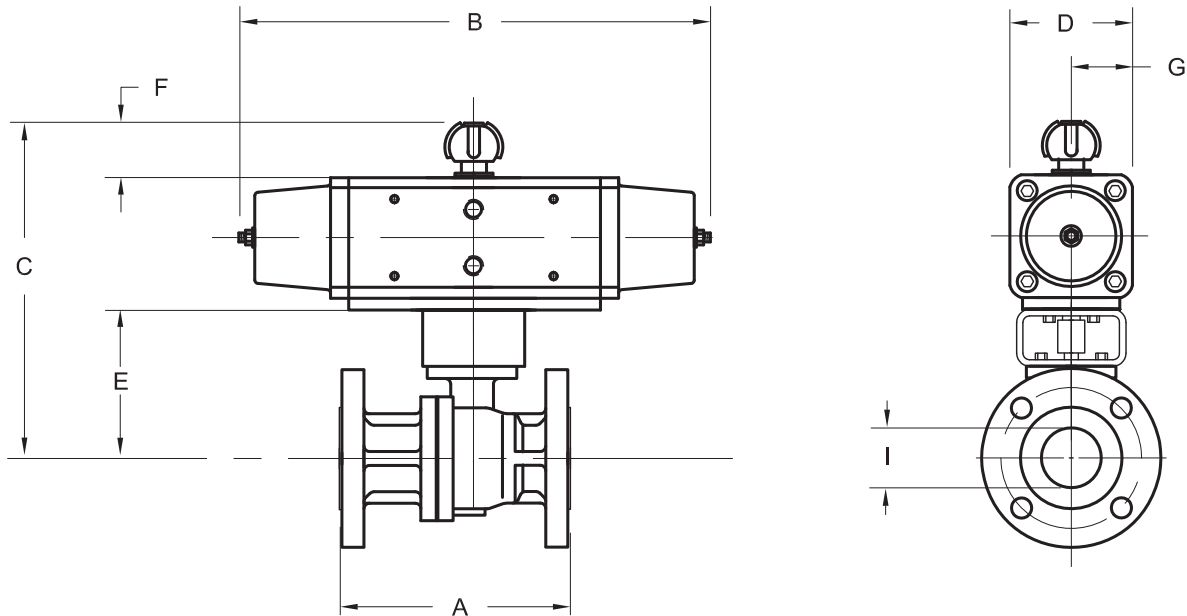
- O Series spring return pneumatic actuator
- Corrosion resistant coating
- NAMUR solenoid mounting pad, ISO 5211 mounting standard
- Visual position indicator
- High duty cycle, permanent lubrication
- Temperature range: -4°F to 175°F

150F_S OSR .5 - 2

Full port ball valve with spring return pneumatic actuator

150# Flanged 2-pc body 50/50 Seats

Actuators are sized for 150 psi pressure differential



DIMENSIONS, WEIGHTS & SPECIFICATIONS

Size	A	B	C	D	E	F	G	I	Actuator	Wt.(lbs.)	Model No.
80 psig Minimum Actuator Air Supply = 8S											
1/2"	4.25	9.45	8.08	2.56	4.54	.79	1.28	.59	PS030	13.4	C150F * S O8S ①
3/4"	4.62	9.45	8.24	2.56	4.70	.79	1.28	.79	PS030	14.4	D150F * S O8S ①
1"	5.00	9.45	8.60	2.56	5.06	.79	1.28	.98	PS030	16.9	E150F * S O8S ①
1-1/2"	6.50	14.06	10.61	3.54	5.65	1.18	1.77	1.50	PS090	29.6	G150F * S O8S ①
2"	7.00	14.65	11.25	3.94	5.90	1.18	1.97	1.97	PS120	40.7	H150F * S O8S ①
60 psig Minimum Actuator Air Supply = 6S											
1/2"	4.25	9.45	8.08	2.56	4.54	.79	1.28	.59	PS030	13.4	C150F * S O6S ①
3/4"	4.62	11.58	8.54	2.83	4.70	.79	1.41	.79	PS045	15.3	D150F * S O6S ①
1"	5.00	11.58	8.90	2.83	5.06	.79	1.41	.98	PS045	17.8	E150F * S O6S ①
1-1/2"	6.50	14.65	11.00	3.94	5.65	1.18	1.97	1.50	PS120	34.2	G150F * S O6S ①
2"	7.00	17.18	11.72	4.41	5.90	1.18	2.20	1.97	PS180	46.7	H150F * S O6S ①

Note: Dimensions "C" & "E" include a 3" high mounting bracket

*C = Carbon Stl Body, 316SS Trim

*S = 316SS Body & Trim

① C=Fail Close, O=Fail Open

150 VALVE SPECIFICATIONS

- 150F Class 150
- Standard Steam Working Pressure: 150SWP, optional 300PSIG
- Protected Seat Design
- Fire Safe Designed to API607-5
- Spiral Wound Body Gasket w/Secondary metal to metal seat
- Carbon Steel or Stainless Steel Body
- Seats: 50/50
- Max Temp: 50/50 seats: 525°F

PNEUMATIC ACTUATOR FEATURES

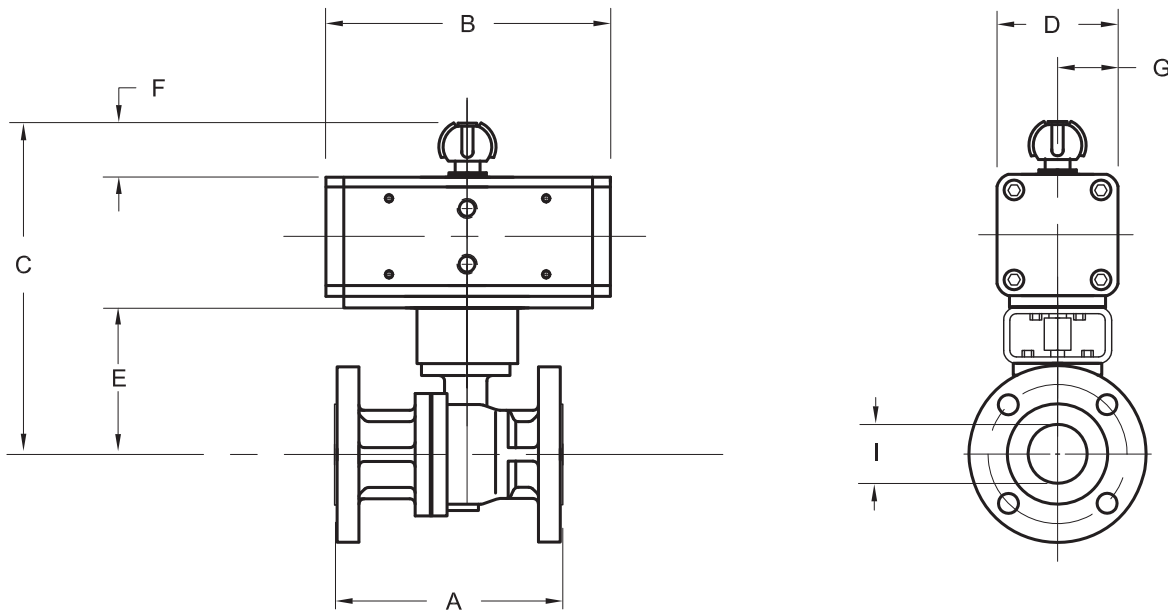
- O Series spring return pneumatic actuator
- Corrosion resistant coating
- NAMUR solenoid mounting pad, ISO 5211 mounting standard
- Visual position indicator
- High duty cycle, permanent lubrication
- Temperature range: -4°F to 175°F

150F_F ODA .5 - 2

Full port ball valve with double acting pneumatic actuator

150# Flanged 2-pc body TFM Seats

Actuators are sized for 150 psi pressure differential



DIMENSIONS, WEIGHTS & SPECIFICATIONS

Size	A	B	C	D	E	F	G	I	Actuator	Wt.(lbs.)	Model No.
80 psig Minimum Actuator Air Supply = 8D											
1/2"	4.25	5.12	7.69	2.17	4.54	.79	1.08	.59	PD030	11.2	C150F * F O8D
3/4"	4.62	5.12	7.85	2.17	4.70	.79	1.08	.79	PD030	12.2	D150F * F O8D
1"	5.00	5.12	8.21	2.17	5.06	.79	1.08	.98	PD030	14.7	E150F * F O8D
1-1/2"	6.50	5.98	9.19	2.56	5.65	.79	1.28	1.50	PD060	22.9	G150F * F O8D
2"	7.00	6.65	9.74	2.83	5.90	.79	1.41	1.97	PD090	30.1	H150F * F O8D
60 psig Minimum Actuator Air Supply = 6D											
1/2"	4.25	5.12	7.69	2.17	4.54	.79	1.08	.59	PD030	11.2	C150F * F O6D
3/4"	4.62	5.12	7.85	2.17	4.70	.79	1.08	.79	PD030	12.2	D150F * F O6D
1"	5.00	5.12	8.21	2.17	5.06	.79	1.08	.98	PD030	14.7	E150F * F O6D
1-1/2"	6.50	6.65	9.49	2.83	5.65	.79	1.41	1.50	PD090	23.6	G150F * F O6D
2"	7.00	7.24	10.46	3.15	5.90	1.18	1.57	1.97	PD120	32.2	H150F * F O6D

Note: Dimensions "C" & "E" include a 3" high mounting bracket

*C = Carbon Stl Body, 316SS Trim

*S = 316SS Body & Trim

150 VALVE SPECIFICATIONS

- 150F Class 150
- Standard Steam Working Pressure: 150SWP, optional 300PSIG
- Protected Seat Design
- Fire Safe Designed to API607-5
- Spiral Wound Body Gasket w/Secondary metal to metal seat
- Carbon Steel or Stainless Steel Body
- Seats: TFM
- Max Temp: TFM seats: 475°F

PNEUMATIC ACTUATOR FEATURES

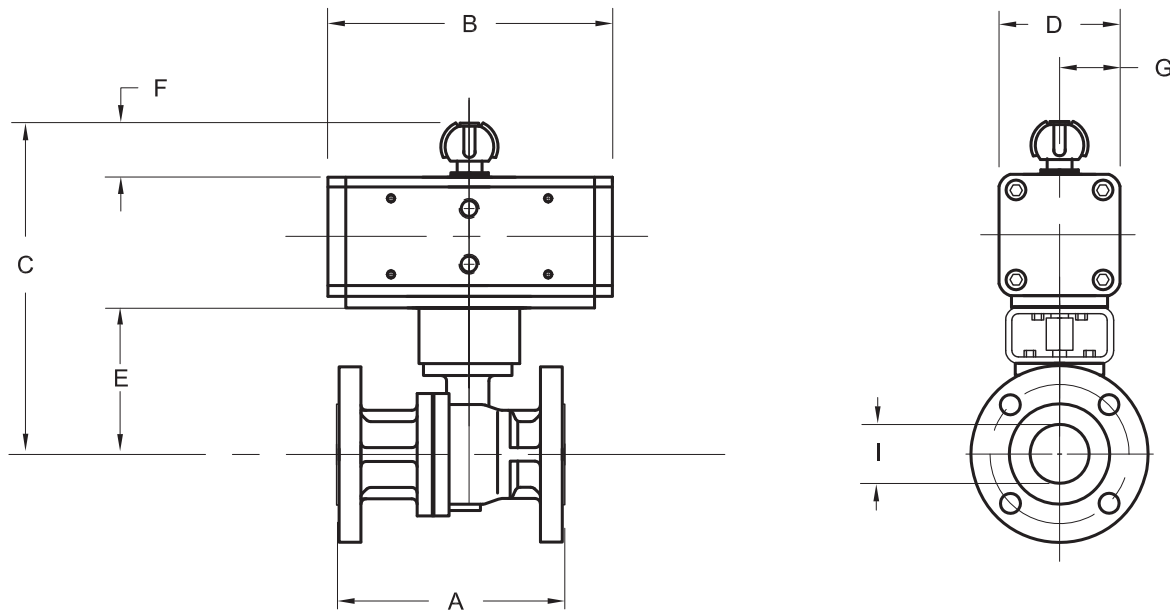
- O Series double acting pneumatic actuator
- Corrosion resistant coating
- NAMUR solenoid mounting pad, ISO 5211 mounting standard
- Visual position indicator
- High duty cycle, permanent lubrication
- Temperature range: -4°F to 175°F

150F_S ODA .5 - 2

Full port ball valve with double acting pneumatic actuator

150# Flanged 2-pc body 50/50 Seats

Actuators are sized for 150 psi pressure differential



DIMENSIONS, WEIGHTS & SPECIFICATIONS

Size	A	B	C	D	E	F	G	I	Actuator	Wt.(lbs.)	Model No.
80 psig Minimum Actuator Air Supply = 8D											
1/2"	4.25	5.12	7.69	2.17	4.54	.79	1.08	.59	PD030	11.2	C150F * S O8D
3/4"	4.62	5.12	7.85	2.17	4.70	.79	1.08	.79	PD030	12.2	D150F * S O8D
1"	5.00	5.67	8.43	2.36	5.06	.79	1.18	.98	PD045	15.3	E150F * S O8D
1-1/2"	6.50	5.98	9.49	2.83	5.65	.79	1.41	1.50	PD090	23.6	G150F * S O8D
2"	7.00	7.24	10.46	3.15	5.90	1.18	1.57	1.97	PD120	32.2	H150F * S O8D
60 psig Minimum Actuator Air Supply = 6D											
1/2"	4.25	5.12	7.69	2.17	4.54	.79	1.08	.59	PD030	11.2	C150F * S O6D
3/4"	4.62	5.67	8.07	2.36	4.70	.79	1.08	.79	PD045	12.8	D150F * S O6D
1"	5.00	5.67	8.43	2.36	5.06	.79	1.08	.98	PD045	15.3	E150F * S O6D
1-1/2"	6.50	7.24	10.21	3.15	5.65	1.18	1.57	1.50	PD120	25.7	G150F * S O6D
2"	7.00	8.35	10.86	3.54	5.90	1.18	1.77	1.97	PD180	33.5	H150F * S O6D

Note: Dimensions "C" & "E" include a 3" high mounting bracket

*C = Carbon Stl Body, 316SS Trim
*S = 316SS Body & Trim

150 VALVE SPECIFICATIONS

- 150F Class 150
- Standard Steam Working Pressure: 150SWP, optional 300PSIG
- Protected Seat Design
- Fire Safe Designed to API607-5
- Spiral Wound Body Gasket w/Secondary metal to metal seat
- Carbon Steel or Stainless Steel Body
- Seats: 50/50
- Max Temp: 50/50 seats: 525°F

PNEUMATIC ACTUATOR FEATURES

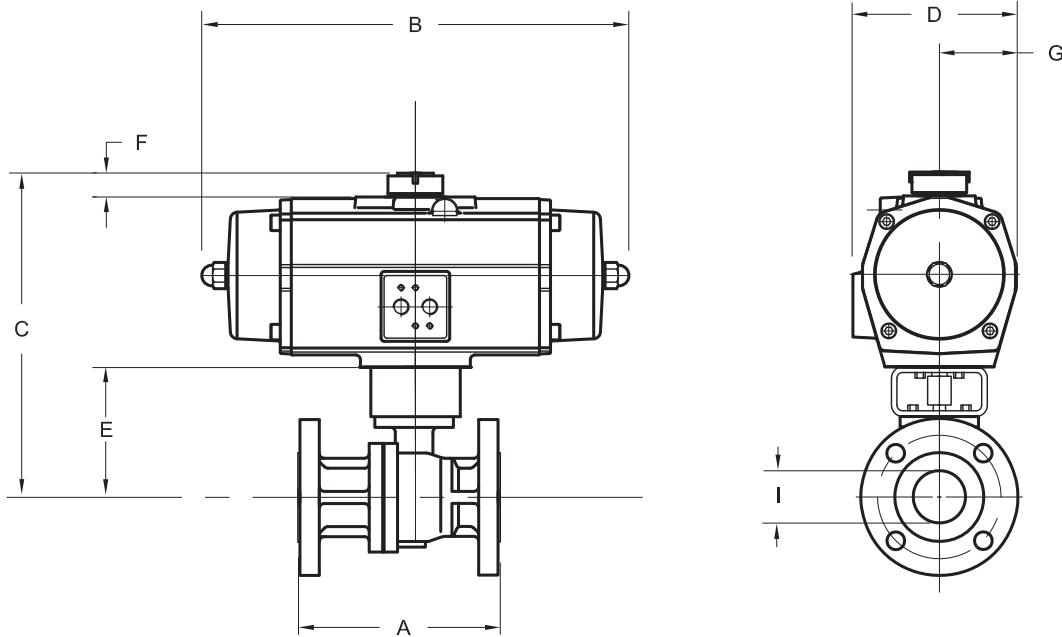
- O Series double acting pneumatic actuator
- Corrosion resistant coating
- NAMUR solenoid mounting pad, ISO 5211 mounting standard
- Visual position indicator
- High duty cycle, permanent lubrication
- Temperature range: -4°F to 175°F

150F_F ESR .5 - 2

Full port ball valve with spring return pneumatic actuator

150# Flanged 2-pc body TFM Seats

Actuators are sized for 150 psi pressure differential



DIMENSIONS, WEIGHTS & SPECIFICATIONS

Size	A	B	C	D	E	F	G	I	Actuator	Wt.(lbs.)	Model No.
80 psig Minimum Actuator Air Supply = 8S											
1/2"	4.25	8.03	8.99	3.78	4.54	.79	1.70	.59	ES40	14.3	C150F * F E8S ①
3/4"	4.62	8.03	9.15	3.78	4.70	.79	1.70	.79	ES40	15.3	D150F * F E8S ①
1"	5.00	8.03	9.51	3.78	5.06	.79	1.70	.98	ES40	17.8	E150F * F E8S ①
1-1/2"	6.50	10.51	11.09	4.60	5.65	.79	2.12	1.50	ES100	29.6	G150F * F E8S ①
2"	7.00	14.17	12.32	5.39	5.90	.79	2.52	1.97	ES200	46.1	H150F * F E8S ①
60 psig Minimum Actuator Air Supply = 6S											
1/2"	4.25	8.03	8.99	3.78	4.54	.79	1.70	.59	ES40	14.3	C150F * F E6S ①
3/4"	4.62	9.80	9.62	4.19	4.70	.79	1.93	.79	ES65	17.9	D150F * F E6S ①
1"	5.00	9.80	9.98	4.19	5.06	.79	1.93	.98	ES65	20.4	E150F * F E6S ①
1-1/2"	6.50	14.17	12.07	5.39	5.65	.79	2.52	1.50	ES200	39.6	G150F * F E6S ①
2"	7.00	14.17	12.32	5.39	5.90	.79	2.52	1.97	ES200	46.1	H150F * F E6S ①

Note: Dimensions "C" & "E" include a 3" high mounting bracket

*C = Carbon Stl Body, 316SS Trim

*S = 316SS Body & Trim

① C=Fail Close, O=Fail Open

150 VALVE SPECIFICATIONS

- 150F Class 150
- Standard Steam Working Pressure: 150SWP, optional 300PSIG
- Protected Seat Design
- Fire Safe Designed to API607-5
- Spiral Wound Body Gasket w/Secondary metal to metal seat
- Carbon Steel or Stainless Steel Body
- Seats: TFM
- Max Temp: TFM seats: 475°F

PNEUMATIC ACTUATOR FEATURES

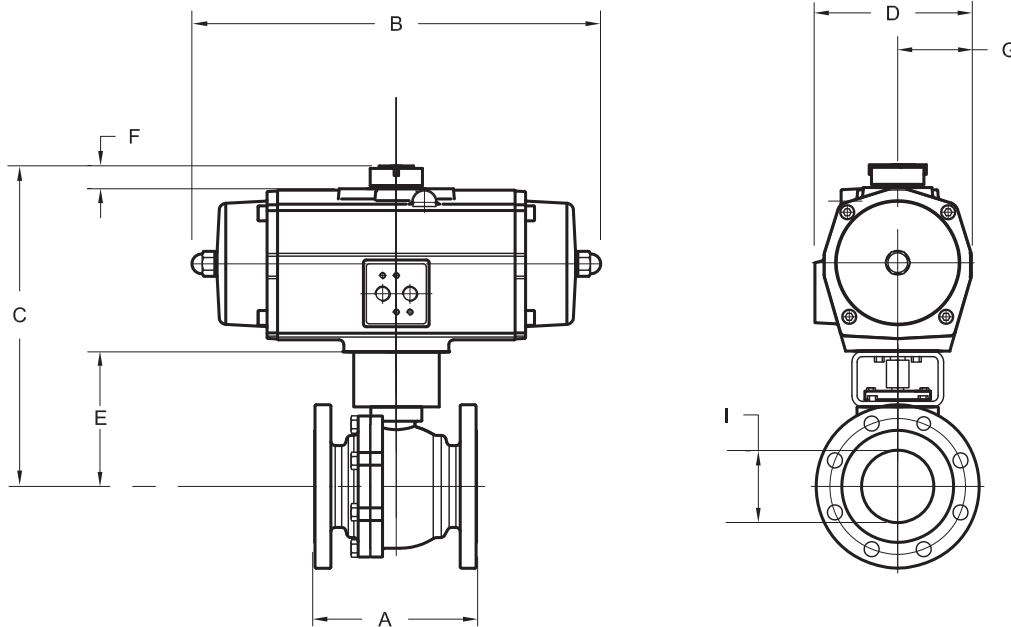
- E Series spring return rack and pinion pneumatic actuator
- Corrosion resistant coating
- NAMUR solenoid mounting pad, ISO 5211 mounting standard
- Visual position indicator
- High duty cycle, permanent lubrication
- Temperature range: -4°F to 175°F

150F_F ESR 3 - 8

Full port ball valve with spring return pneumatic actuator

150# Flanged 2-pc body TFM Seats

Actuators are sized for 150 psi pressure differential



DIMENSIONS, WEIGHTS & SPECIFICATIONS

Size	A	B	C	D	E	F	G	I	Actuator	Wt.(lbs.)	Model No.
80 psig Minimum Actuator Air Supply = 8S											
3"	8.00	15.24	14.59	7.12	6.67	.79	3.41	3.00	ES350	84.8	J150F * F E8S ①
4"	9.00	18.78	18.24	8.52	8.40	1.18	4.08	4.00	ES600	132.8	K150F * F E8S ①
6"	15.50	25.08	24.07	10.81	11.20	1.18	5.21	5.98	ES1600	320.1	M150F * F E8S ①
8"	18.00	32.83	27.74	15.35	11.60	1.18	7.48	7.87	PS4000	563.0	N150F * F E8S ①
60 psig Minimum Actuator Air Supply = 6S											
3"	8.00	18.78	16.51	8.52	6.67	1.18	4.08	3.00	ES600	108.3	J150F * F E6S ①
4"	9.00	18.78	18.24	8.52	8.40	1.18	4.08	4.00	ES600	132.8	K150F * F E6S ①
6"	15.50	22.44	26.40	14.17	11.20	1.18	6.89	5.98	PS2500	369.0	M150F * F E6S ①
8"	18.00	32.83	27.74	15.35	11.60	1.18	7.48	7.87	PS4000	563.0	N150F * F E6S ①

Note: Dimensions "C" & "E" include a 3" high mounting bracket on 3" valve and a 4" high mounting bracket on 4" - 8" valves

*C = Carbon Stl Body, 316SS Trim
*S = 316SS Body & Trim
① C=Fail Close, O=Fail Open

150 VALVE SPECIFICATIONS

- 150F Class 150
- Standard Steam Working Pressure: 150SWP, optional 300PSIG
- Protected Seat Design
- Fire Safe Designed to API607-5
- Spiral Wound Body Gasket w/Secondary metal to metal seat
- Carbon Steel or Stainless Steel Body
- Seats: TFM
- Max Temp: TFM seats: 475°F

PNEUMATIC ACTUATOR FEATURES

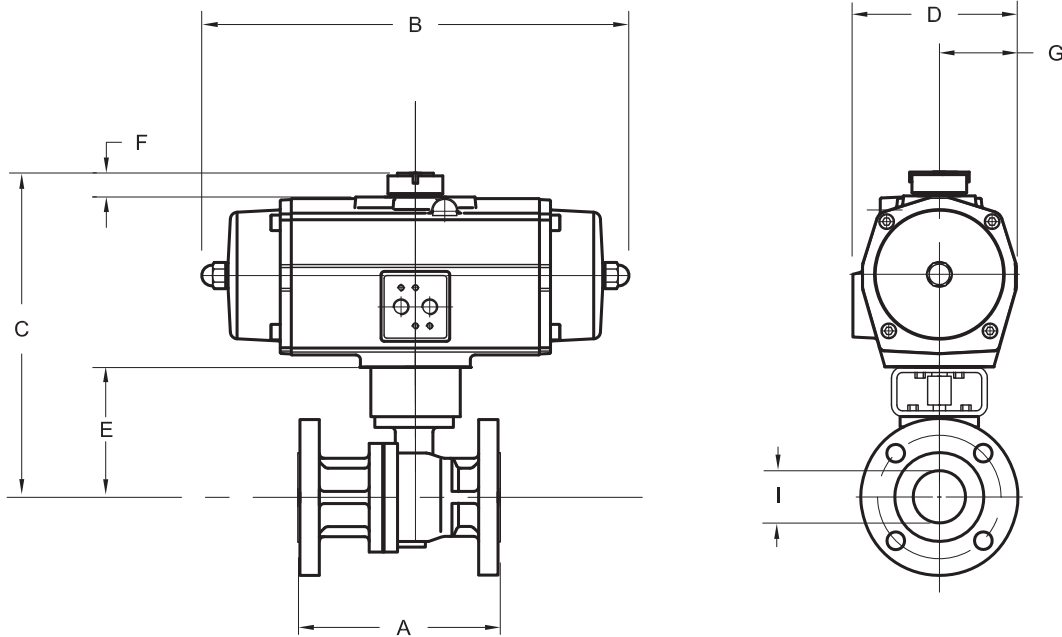
- E Series spring return rack and pinion pneumatic actuator
- Corrosion resistant coating
- NAMUR solenoid mounting pad, ISO 5211 mounting standard
- Visual position indicator
- High duty cycle, permanent lubrication
- Temperature range: -4°F to 175°F

150F_S ESR .5 - 2

Full port ball valve with spring return pneumatic actuator

150# Flanged 2-pc body 50/50 Seats

Actuators are sized for 150 psi pressure differential



DIMENSIONS, WEIGHTS & SPECIFICATIONS

Size	A	B	C	D	E	F	G	I	Actuator	Wt.(lbs.)	Model No.
80 psig Minimum Actuator Air Supply = 8S											
1/2"	4.25	8.03	8.99	3.78	4.54	.79	1.70	.59	ES40	14.3	C150F * S E8S ①
3/4"	4.62	8.03	9.15	3.78	4.70	.79	1.70	.79	ES40	15.3	D150F * S E8S ①
1"	5.00	9.80	9.98	4.19	5.06	.79	1.93	.98	ES65	20.4	E150F * S E8S ①
1-1/2"	6.50	14.17	12.07	5.39	5.65	.79	2.52	1.50	ES200	39.6	G150F * S E8S ①
2"	7.00	14.17	12.32	5.39	5.90	.79	2.52	1.97	ES200	46.1	H150F * S E8S ①
60 psig Minimum Actuator Air Supply = 6S											
1/2"	4.25	6.77	9.46	3.26	4.54	.79	1.93	.59	ES65	16.9	C150F * S E6S ①
3/4"	4.62	8.03	9.62	3.78	4.70	.79	1.93	.79	ES65	17.9	D150F * S E6S ①
1"	5.00	9.80	9.98	4.19	5.06	.79	1.93	.98	ES65	20.4	E150F * S E6S ①
1-1/2"	6.50	10.51	12.07	4.60	5.65	.79	2.52	1.50	ES200	39.6	G150F * S E6S ①
2"	7.00	14.17	13.82	5.39	5.90	.79	3.41	1.97	ES350	63.3	H150F * S E6S ①

Note: Dimensions "C" & "E" include a 3" high mounting bracket

*C = Carbon Stl Body, 316SS Trim

*S = 316SS Body & Trim

① C=Fail Close, O=Fail Open

150 VALVE SPECIFICATIONS

- 150F Class 150
- Standard Steam Working Pressure: 150SWP, optional 300PSIG
- Protected Seat Design
- Fire Safe Designed to API607-5
- Spiral Wound Body Gasket w/Secondary metal to metal seat
- Carbon Steel or Stainless Steel Body
- Seats: 50/50
- Max Temp: 50/50 seats: 525°F

PNEUMATIC ACTUATOR FEATURES

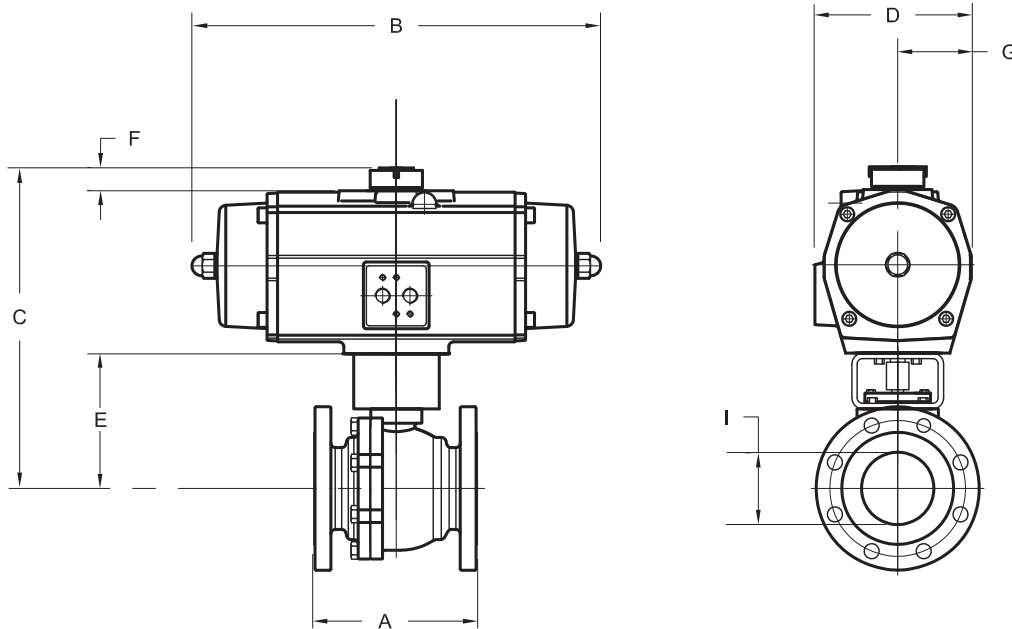
- E Series spring return rack and pinion pneumatic actuator
- Corrosion resistant coating
- NAMUR solenoid mounting pad, ISO 5211 mounting standard
- Visual position indicator
- High duty cycle, permanent lubrication
- Temperature range: -4°F to 175°F

150F_S ESR 3 - 8

Full port ball valve with spring return pneumatic actuator

150# Flanged 2-pc body 50/50 Seats

Actuators are sized for 150 psi pressure differential



DIMENSIONS, WEIGHTS & SPECIFICATIONS

Size	A	B	C	D	E	F	G	I	Actuator	Wt.(lbs.)	Model No.
80 psig Minimum Actuator Air Supply = 8S											
3"	8.00	15.24	14.59	7.12	6.67	.79	3.41	3.00	ES350	84.8	J150F * S E8S ①
4"	9.00	20.35	19.78	9.51	8.40	1.18	4.54	4.00	ES950	157.1	K150F * S E8S ①
6"	15.50	22.44	26.40	14.17	11.20	1.18	6.89	5.98	PS2500	369.0	M150F * S E8S ①
8"	18.00	32.83	27.74	15.35	11.60	1.18	7.48	7.87	PS4000	572.0	N150F * S E8S ①
60 psig Minimum Actuator Air Supply = 6S											
3"	8.00	18.78	16.51	8.52	6.67	1.18	4.08	3.00	ES600	108.3	J150F * S E6S ①
4"	9.00	20.35	19.78	9.51	8.40	1.18	4.54	4.00	ES950	157.1	K150F * S E6S ①
6"	15.50	22.44	26.40	14.17	11.20	1.18	6.89	5.98	PS2500	369.0	M150F * S E6S ①
8"									N/A		

Note: Dimensions "C" & "E" include a 3" high mounting bracket on 3" valve and a 4" high mounting bracket on 4" - 8" valves

*C = Carbon Stl Body, 316SS Trim
*S = 316SS Body & Trim
① C=Fail Close, O=Fail Open

150 VALVE SPECIFICATIONS

- 150F Class 150
- Standard Steam Working Pressure: 150SWP, optional 300PSIG
- Protected Seat Design
- Fire Safe Designed to API607-5
- Spiral Wound Body Gasket w/Secondary metal to metal seat
- Carbon Steel or Stainless Steel Body
- Seats: 50/50
- Max Temp: 50/50 seats: 525°F

PNEUMATIC ACTUATOR FEATURES

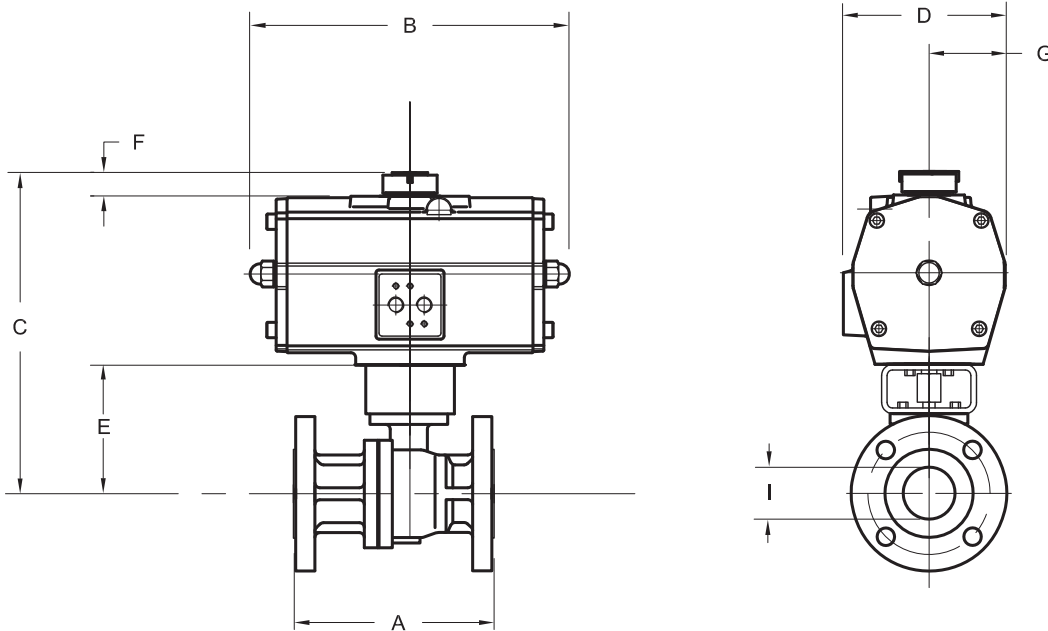
- E Series spring return rack and pinion pneumatic actuator
- Corrosion resistant coating
- NAMUR solenoid mounting pad, ISO 5211 mounting standard
- Visual position indicator
- High duty cycle, permanent lubrication
- Temperature range: -4°F to 175°F

150F_F EDA .5 - 2

Full port ball valve with double acting pneumatic actuator

150# Flanged 2-pc body TFM Seats

Actuators are sized for 150 psi pressure differential



DIMENSIONS, WEIGHTS & SPECIFICATIONS

Size	A	B	C	D	E	F	G	I	Actuator	Wt.(lbs.)	Model No.
80 psig Minimum Actuator Air Supply = 8D											
1/2"	4.25	6.26	8.48	3.26	4.54	.79	1.46	.59	ED25	11.9	C150F * F E8D
3/4"	4.62	6.26	8.64	3.26	4.70	.79	1.46	.79	ED25	12.9	D150F * F E8D
1"	5.00	6.26	9.00	3.26	5.06	.79	1.46	.98	ED25	15.4	E150F * F E8D
1-1/2"	6.50	7.09	10.10	3.78	5.65	.79	1.70	1.50	ED40	23.5	G150F * F E8D
2"	7.00	7.83	18.82	4.19	5.90	.79	1.93	1.97	ED65	31.3	H150F * F E8D
60 psig Minimum Actuator Air Supply = 6D											
1/2"	4.25	6.26	11.78	3.26	4.54	.79	1.46	.59	ED25	11.9	C150F * F E6D
3/4"	4.62	6.26	11.94	3.26	4.70	.79	1.46	.79	ED25	12.9	D150F * F E6D
1"	5.00	6.26	12.30	3.26	5.06	.79	1.46	.98	ED25	15.4	E150F * F E6D
1-1/2"	6.50	7.83	13.40	4.19	5.65	.79	1.93	1.50	ED65	24.8	G150F * F E6D
2"	7.00	7.83	14.12	4.19	5.90	.79	1.93	1.97	ED65	31.3	H150F * F E6D

Note: Dimensions "C" & "E" include a 3" high mounting bracket

*C = Carbon Stl Body, 316SS Trim

*S = 316SS Body & Trim

150 VALVE SPECIFICATIONS

- 150F Class 150
- Standard Steam Working Pressure: 150SWP, optional 300PSIG
- Protected Seat Design
- Fire Safe Designed to API607-5
- Spiral Wound Body Gasket w/Secondary metal to metal seat
- Carbon Steel or Stainless Steel Body
- Seats: TFM
- Max Temp: TFM seats: 475°F

PNEUMATIC ACTUATOR FEATURES

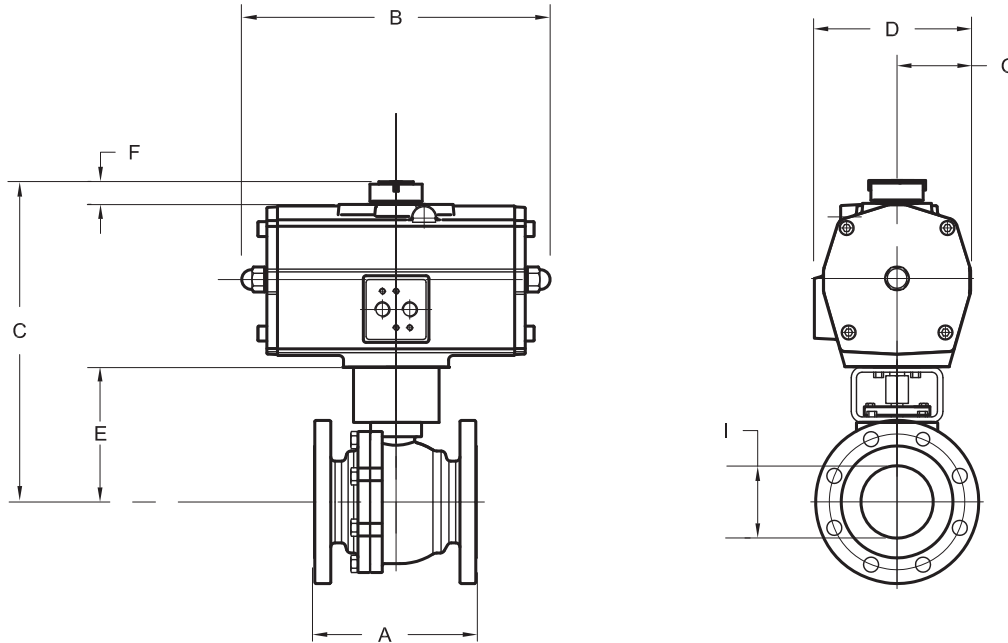
- E Series double acting rack and pinion pneumatic actuator
- Corrosion resistant coating
- NAMUR solenoid mounting pad, ISO 5211 mounting standard
- Visual position indicator
- High duty cycle, permanent lubrication
- Temperature range: -4°F to 175°F

150F_F EDA 3 - 8

Full port ball valve with double acting pneumatic actuator

150# Flanged 2-pc body TFM Seats

Actuators are sized for 150 psi pressure differential



DIMENSIONS, WEIGHTS & SPECIFICATIONS

Size	A	B	C	D	E	F	G	I	Actuator	Wt.(lbs.)	Model No.
80 psig Minimum Actuator Air Supply = 8D											
3"	8.00	11.14	12.11	4.60	6.67	.79	2.12	3.00	ED100	54.3	J150F * F E8D
4"	9.00	11.14	14.82	5.39	8.40	.79	2.52	4.00	ED200	84.8	K150F * F E8D
6"	15.50	15.24	21.04	8.52	11.20	1.18	4.08	5.98	ED600	217.8	M150F * F E8D
8"	18.00	20.31	24.47	10.81	11.60	1.18	5.21	7.87	ED1600	366.1	N150F * F E8D
60 psig Minimum Actuator Air Supply = 6D											
3"	8.00	11.14	13.09	5.39	6.67	.79	2.52	3.00	ED200	60.3	J150F * F E6D
4"	9.00	12.01	16.32	7.12	8.40	.79	3.41	4.00	ED350	94.9	K150F * F E6D
6"	15.50	16.69	22.58	9.51	11.20	1.18	4.54	5.98	ED950	233.2	M150F * F E6D
8"	18.00	20.31	24.47	10.81	11.60	1.18	5.21	7.87	ED1600	366.1	M150F * F E6D

Note: Dimensions "C" & "E" include a 3" high mounting bracket on 3" valve and a 4" high mounting bracket on 4" - 8" valves

*C = Carbon Stl Body, 316SS Trim
*S = 316SS Body & Trim

150 VALVE SPECIFICATIONS

- 150F Class 150
- Standard Steam Working Pressure: 150SWP, optional 300PSIG
- Protected Seat Design
- Fire Safe Designed to API607-5
- Spiral Wound Body Gasket w/Secondary metal to metal seat
- Carbon Steel or Stainless Steel Body
- Seats: TFM
- Max Temp: TFM seats: 475°F

PNEUMATIC ACTUATOR FEATURES

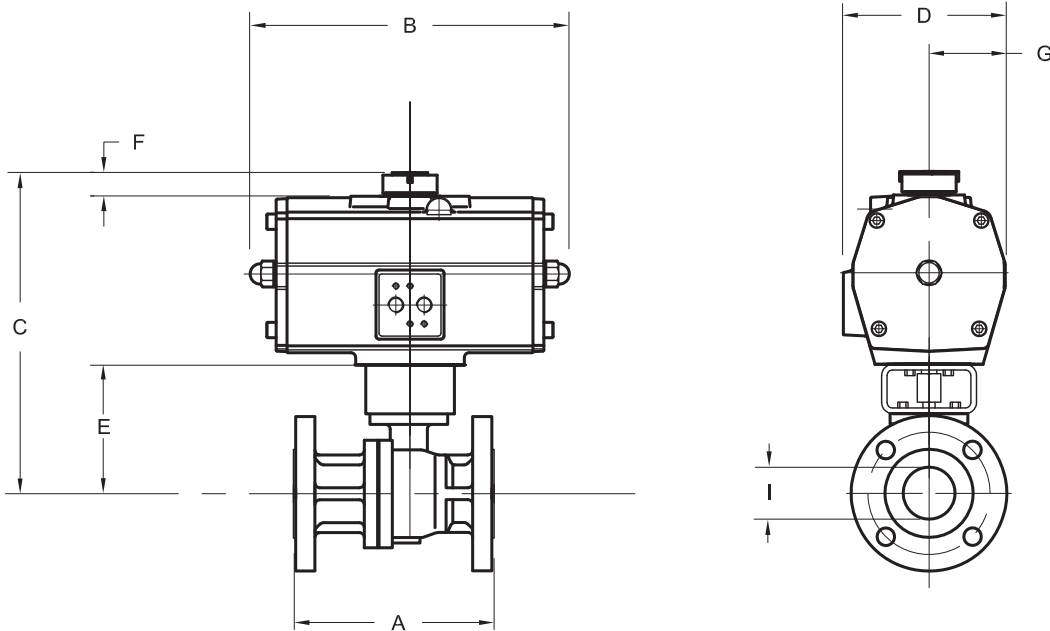
- E Series double acting rack and pinion pneumatic actuator
- Corrosion resistant coating
- NAMUR solenoid mounting pad, ISO 5211 mounting standard
- Visual position indicator
- High duty cycle, permanent lubrication
- Temperature range: -4°F to 175°F

150F_S EDA .5 - 2

Full port ball valve with double acting pneumatic actuator

150# Flanged 2-pc body 50/50 Seats

Actuators are sized for 150 psi pressure differential



DIMENSIONS, WEIGHTS & SPECIFICATIONS

Size	A	B	C	D	E	F	G	I	Actuator	Wt.(lbs.)	Model No.
80 psig Minimum Actuator Air Supply = 8D											
1/2"	4.25	6.26	8.48	3.26	4.54	.79	1.46	.59	ED25	11.9	C150F * S E8D
3/4"	4.62	6.26	8.64	3.26	4.70	.79	1.46	.79	ED25	12.9	D150F * S E8D
1"	5.00	6.26	9.00	3.26	5.06	.79	1.46	.98	ED25	15.4	E150F * S E8D
1-1/2"	6.50	7.83	10.57	4.19	5.65	.79	1.93	1.50	ED65	24.8	G150F * S E8D
2"	7.00	7.83	10.82	4.19	5.90	.79	1.93	1.97	ED65	31.3	H150F * S E8D
60 psig Minimum Actuator Air Supply = 6D											
1/2"	4.25	6.26	8.48	3.26	4.54	.79	1.46	.59	ED25	11.9	C150F * S E6D
3/4"	4.62	6.26	8.64	3.26	4.70	.79	1.70	.79	ED25	12.9	D150F * S E6D
1"	5.00	6.26	9.00	3.26	5.06	.79	1.93	.98	ED25	15.4	E150F * S E6D
1-1/2"	6.50	7.83	10.57	4.19	5.65	.79	1.93	1.50	ED65	24.8	G150F * S E6D
2"	7.00	8.70	11.34	4.60	5.90	.79	2.12	1.97	ED100	32.8	H150F * S E6D

Note: Dimensions "C" & "E" include a 3" high mounting bracket

*C = Carbon Stl Body, 316SS Trim
*S = 316SS Body & Trim

150 VALVE SPECIFICATIONS

- 150F Class 150
- Standard Steam Working Pressure: 150SWP, optional 300PSIG
- Protected Seat Design
- Fire Safe Designed to API607-5
- Spiral Wound Body Gasket w/Secondary metal to metal seat
- Carbon Steel or Stainless Steel Body
- Seats: 50/50
- Max Temp: 50/50 seats: 525°F

PNEUMATIC ACTUATOR FEATURES

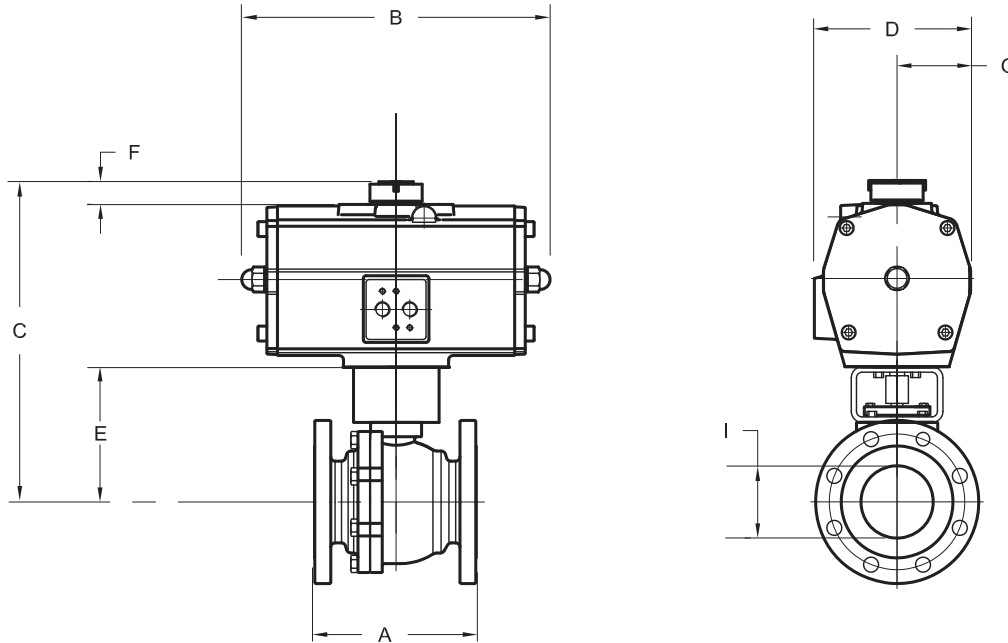
- E Series double acting rack and pinion pneumatic actuator
- Corrosion resistant coating
- NAMUR solenoid mounting pad, ISO 5211 mounting standard
- Visual position indicator
- High duty cycle, permanent lubrication
- Temperature range: -4°F to 175°F

150F_S EDA 3 - 8

Full port ball valve with double acting pneumatic actuator

150# Flanged 2-pc body 50/50 Seats

Actuators are sized for 150 psi pressure differential



DIMENSIONS, WEIGHTS & SPECIFICATIONS

Size	A	B	C	D	E	F	G	I	Actuator	Wt.(lbs.)	Model No.
80 psig Minimum Actuator Air Supply = 8D											
3"	8.00	11.14	13.09	5.39	6.67	.79	2.52	3.00	ED200	60.3	J150F * S E8D
4"	9.00	12.01	16.32	7.12	8.40	.79	3.41	4.00	ED350	94.9	K150F * S E8D
6"	15.50	16.69	22.58	9.51	11.20	1.18	4.54	5.98	ED950	233.2	M150F * S E8D
8"	18.00	20.31	24.47	10.81	11.60	1.18	5.21	7.87	ED1600	366.1	N150F * S E8D
60 psig Minimum Actuator Air Supply = 6D											
3"	8.00	11.14	13.09	5.39	6.67	.79	2.52	3.00	ED200	60.3	J150F * S E6D
4"	9.00	12.01	16.32	7.12	8.40	.79	3.41	4.00	ED350	94.9	K150F * S E6D
6"	15.50	20.31	24.07	10.81	11.20	1.18	5.21	5.98	ED1600	269.1	M150F * S E6D
8"	18.00	14.88	26.80	14.17	11.60	1.18	6.89	7.87	PD2500	397.0	M150F * S E6D

Note: Dimensions "C" & "E" include a 3" high mounting bracket on 3" valve and a 4" high mounting bracket on 4" - 8" valves

*C = Carbon Stl Body, 316SS Trim
*S = 316SS Body & Trim

150 VALVE SPECIFICATIONS

- 150F Class 150
- Standard Steam Working Pressure: 150SWP, optional 300PSIG
- Protected Seat Design
- Fire Safe Designed to API607-5
- Spiral Wound Body Gasket w/Secondary metal to metal seat
- Carbon Steel or Stainless Steel Body
- Seats: 50/50
- Max Temp: 50/50 seats: 525°F

PNEUMATIC ACTUATOR FEATURES

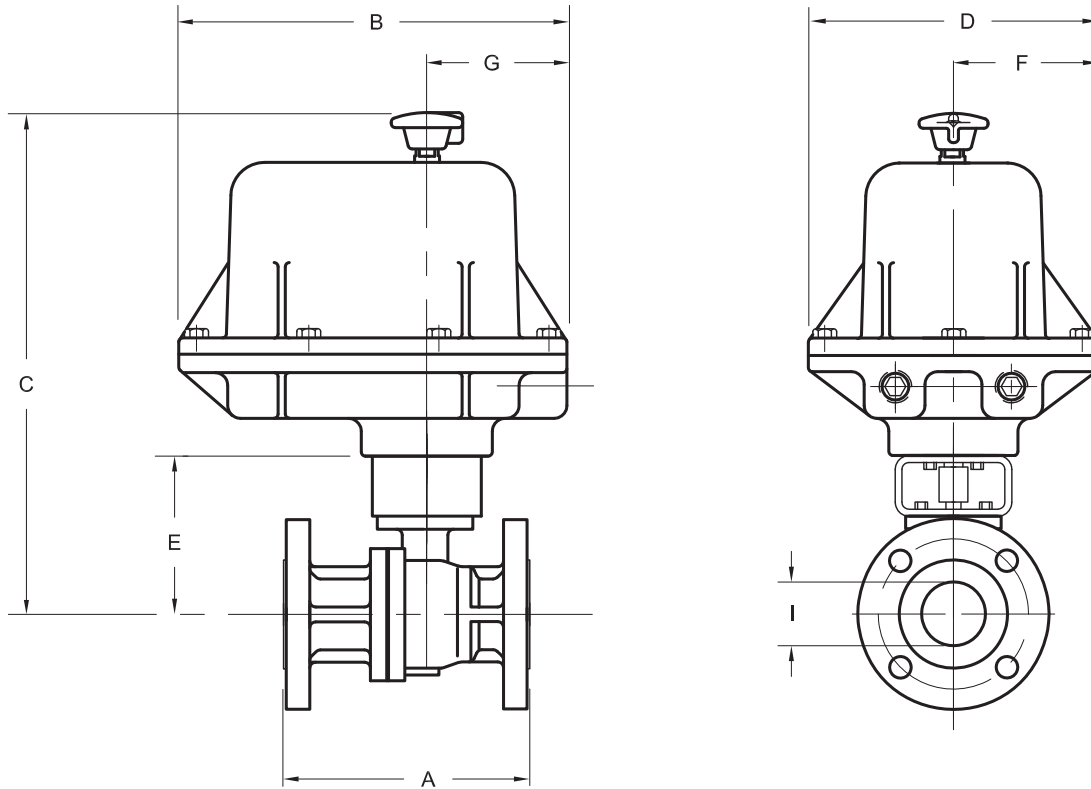
- E & P Series double acting rack and pinion pneumatic actuator
- Corrosion resistant coating
- NAMUR solenoid mounting pad, ISO 5211 mounting standard
- Visual position indicator
- High duty cycle, permanent lubrication
- Temperature range: -4°F to 175°F

150F_F B7A .5 - 2

Full port ball valve with electric actuator, NEMA 7, 120vac

150# Flanged 2-pc body TFM Seats

Actuators are sized for 150 psi pressure differential



DIMENSIONS, WEIGHTS & SPECIFICATIONS

Size	A	B	C	D	E	F	G	I	Actuator	Wt.(lbs.)	Model No.
1/2"	4.25	8.25	12.04	6.25	4.54	3.12	3.75	.59	EM310-30	27.0	C150F * F B7A
3/4"	4.62	8.25	12.16	6.25	4.66	3.12	3.75	.79	EM310-30	28.0	D150F * F B7A
1"	5.00	8.25	12.55	6.25	5.05	3.12	3.75	.98	EM310-30	30.5	E150F * F B7A
1-1/2"	6.50	8.25	13.10	6.25	5.60	3.12	3.75	1.50	EM310-30	37.5	G150F * F B7A
2"	7.00	8.25	13.40	6.25	5.90	3.12	3.75	1.97	EM310-30	44.0	H150F * F B7A

Note: Dimensions "C" & "E" include a 3" high mounting bracket

*C = Carbon Stl Body, 316SS Trim

*S = 316SS Body & Trim

150 VALVE SPECIFICATIONS

- 150F Class 150
- Standard Steam Working Pressure: 150SWP, optional 300PSIG
- Protected Seat Design
- Fire Safe Designed to API607-5
- Spiral Wound Body Gasket w/Secondary metal to metal seat
- Carbon Steel or Stainless Steel Body
- Seats: TFM
- Max Temp: TFM seats: 475°F

ELECTRIC ACTUATOR FEATURES

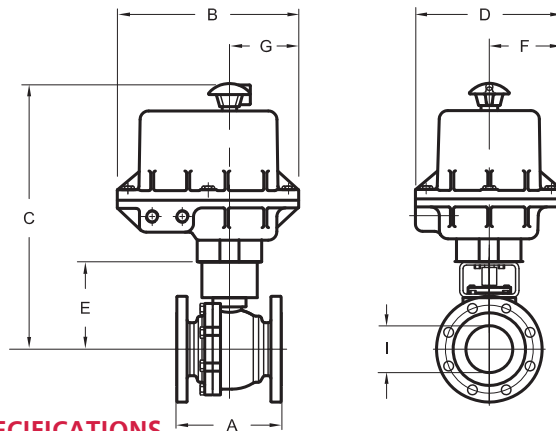
- B7 Series electric actuator
- NEMA 4, 4x, 7, & 9; CSA approved
- Weatherproof
- Class I Groups C and D, Div. 1
- Class II Groups E, F, & G
- (2) 1/2" NPT conduit entries
- Manual override
- Visual position Indicator
- CSA certified
- Temperature range: 0°F to 175°F

150F_F B7A 3 - 8

Full port ball valve with electric actuator, NEMA 7, 120vac

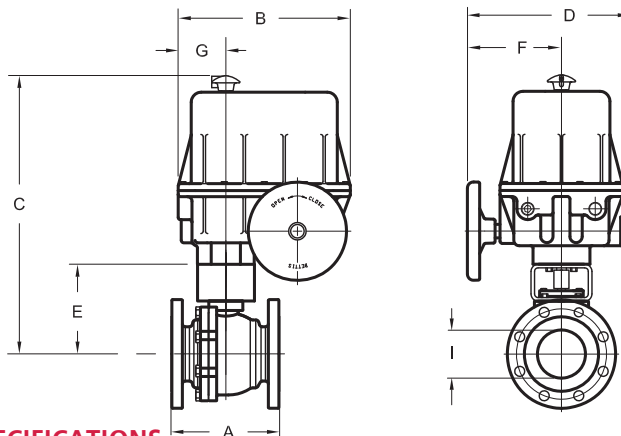
150# Flanged 2-pc body TFM Seats

Actuators are sized for 150 psi pressure differential



DIMENSIONS, WEIGHTS & SPECIFICATIONS

Size	A	B	C	D	E	F	G	I	Actuator	Wt.(lbs.)	Model No.
3"	8.00	9.75	16.11	7.75	6.67	3.88	3.75	3.00	EM500-30	65.5	J150F * F B7A



DIMENSIONS, WEIGHTS & SPECIFICATIONS

Size	A	B	C	D	E	F	G	I	Actuator	Wt.(lbs.)	Model No.
4"	9.00	14.00	23.72	13.31	8.40	7.62	3.88	4.00	EM810-30	232.0	K150F * F B7A
6"	15.50	14.00	23.72	13.31	11.20	7.62	3.88	5.98	EM820-30	335.0	M150F * F B7A
8"	18.00	14.00	23.72	13.31	11.60	7.62	3.88	7.87	EM840-48	432.0	N150F * F B7A

Note: Dimensions "C" & "E" include a 3" high mounting bracket on 3" valve and a 4" high mounting bracket on 4" - 8" valves

*C = Carbon Stl Body, 316SS Trim
*S = 316SS Body & Trim

150 VALVE SPECIFICATIONS

- 150F Class 150
- Standard Steam Working Pressure: 150SWP, optional 300PSIG
- Protected Seat Design
- Fire Safe Designed to API607-5
- Spiral Wound Body Gasket w/Secondary metal to metal seat
- Carbon Steel or Stainless Steel Body
- Seats: TFM
- Max Temp: TFM seats: 475°F

ELECTRIC ACTUATOR FEATURES

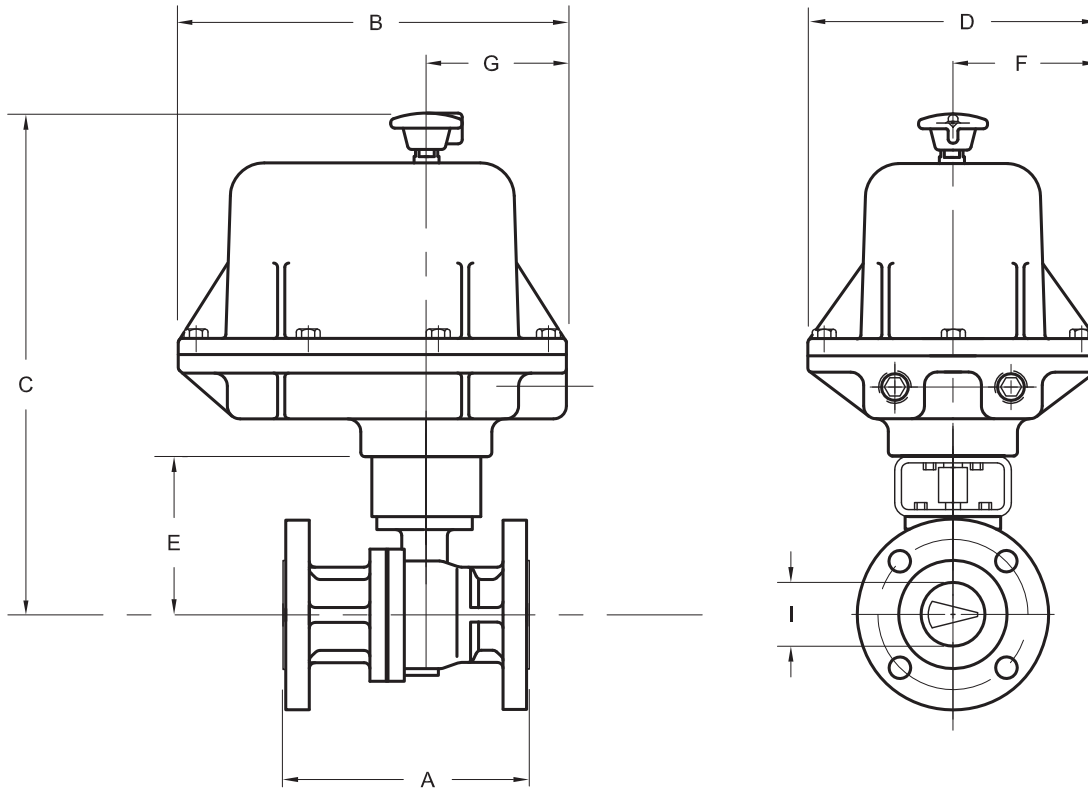
- B7 Series electric actuator
- NEMA 4, 4x, 7, & 9; CSA approved
- Weatherproof
- Class I Groups C and D, Div. 1
- Class II Groups E, F, & G
- (2) 1/2" NPT conduit entries
- Manual override
- Visual position Indicator
- CSA certified
- Temperature range: 0°F to 175°F

150F_S B7A .5 - 1.5

Full port ball valve with electric actuator, NEMA 7, 120vac

150# Flanged 2-pc body 50/50 Seats

Actuators are sized for 150 psi pressure differential



DIMENSIONS, WEIGHTS & SPECIFICATIONS

Size	A	B	C	D	E	F	G	I	Actuator	Wt.(lbs.)	Model No.
1/2"	4.25	8.25	12.04	6.25	4.54	3.12	3.75	.59	EM310-30	27.0	C150F * S B7A
3/4"	4.62	8.25	12.16	6.25	4.66	3.12	3.75	.79	EM310-30	28.0	D150F * S B7A
1"	5.00	8.25	12.55	6.25	5.05	3.12	3.75	.98	EM310-30	30.5	E150F * S B7A
1-1/2"	6.50	8.25	13.10	6.25	5.60	3.12	3.75	1.50	EM310-30	37.5	G150F * S B7A

Note: Dimensions "C" & "E" include a 3" high mounting bracket

*C = Carbon Stl Body, 316SS Trim

*S = 316SS Body & Trim

150 VALVE SPECIFICATIONS

- 150F Class 150
- Standard Steam Working Pressure: 150SWP, optional 300PSIG
- Protected Seat Design
- Fire Safe Designed to API607-5
- Spiral Wound Body Gasket w/Secondary metal to metal seat
- Carbon Steel or Stainless Steel Body
- Seats: 50/50
- Max Temp: 50/50 seats: 525°F

ELECTRIC ACTUATOR FEATURES

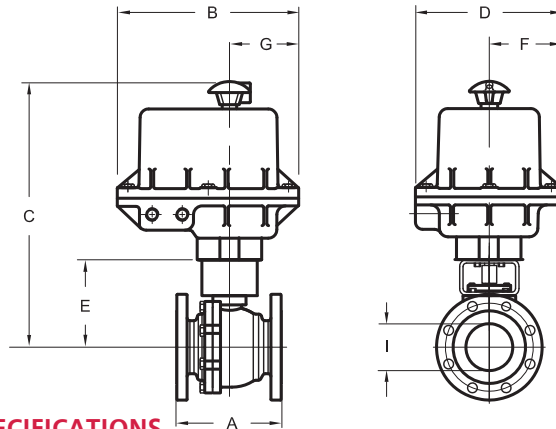
- B7 Series electric actuator
- NEMA 4, 4x, 7, & 9; CSA approved
- Weatherproof
- Class I Groups C and D, Div. 1
- Class II Groups E, F, & G
- (2) 1/2" NPT conduit entries
- Manual override
- Visual position Indicator
- CSA certified
- Temperature range: 0°F to 175°F

150F_S B7A 2 - 8

Full port ball valve with electric actuator, NEMA 7, 120vac

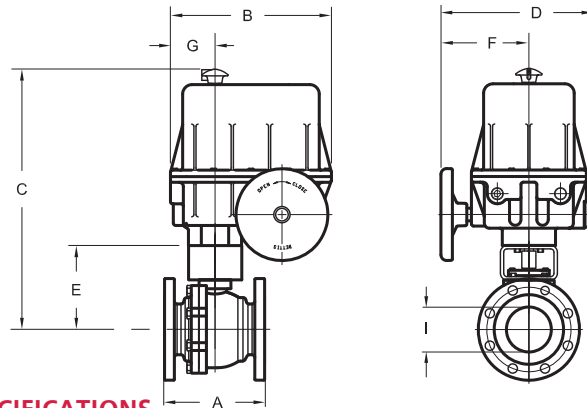
150# Flanged 2-pc body 50/50 Seats

Actuators are sized for 150 psi pressure differential



DIMENSIONS, WEIGHTS & SPECIFICATIONS

Size	A	B	C	D	E	F	G	I	Actuator	Wt.(lbs.)	Model No.
2"	7.00	9.75	15.34	7.75	5.90	3.88	3.75	1.97	EM520-15	44.0	H150F * S B7A
3"	8.00	9.75	16.11	7.75	6.67	3.88	3.75	3.00	EM500-30	65.5	J150F * S B7A



DIMENSIONS, WEIGHTS & SPECIFICATIONS

Size	A	B	C	D	E	F	G	I	Actuator	Wt.(lbs.)	Model No.
4"	9.00	14.00	23.72	13.31	8.40	7.62	3.88	4.00	EM810-30	232.0	K150F * S B7A
6"	15.50	14.00	23.72	13.31	11.20	7.62	3.88	5.98	EM830-30	335.0	M150F * S B7A
8"	18.00	14.00	23.72	13.31	11.60	7.62	3.88	7.87	EM840-72	432.0	N150F * S B7A

Note: Dimensions "C" & "E" include a 3" high mounting bracket on 2" & 3" valve and a 4" high mounting bracket on 4" - 8" valves

*C = Carbon Stl Body, 316SS Trim
*S = 316SS Body & Trim

150 VALVE SPECIFICATIONS

- 150F Class 150
- Standard Steam Working Pressure: 150SWP, optional 300PSIG
- Protected Seat Design
- Fire Safe Designed to API607-5
- Spiral Wound Body Gasket w/Secondary metal to metal seat
- Carbon Steel or Stainless Steel Body
- Seats: 50/50
- Max Temp: 50/50 seats: 525°F

ELECTRIC ACTUATOR FEATURES

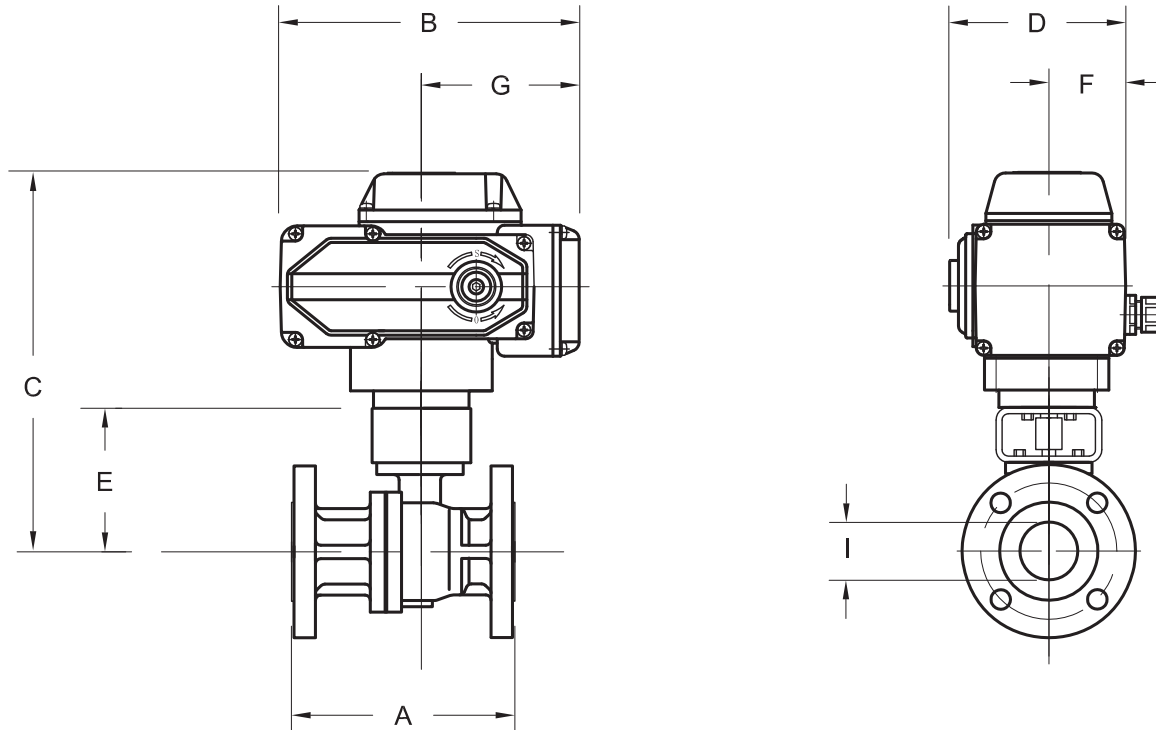
- B7 Series electric actuator
- NEMA 4, 4x, 7, & 9; CSA approved
- Weatherproof
- Class I Groups C and D, Div. 1
- Class II Groups E, F, & G
- (2) 1/2" NPT conduit entries
- Manual override
- Visual position Indicator
- CSA certified
- Temperature range: 0°F to 175°F

150F_F K4A .5 - 2

Full port ball valve with electric actuator

150# Flanged 2-pc body TFM Seats

Actuators are sized for 150 psi pressure differential



DIMENSIONS, WEIGHTS & SPECIFICATIONS

Size	A	B	C	D	E	F	G	I	Actuator	Wt.(lbs.)	Model No.
1/2"	4.25	6.24	8.62	4.51	4.54	2.00	2.99	.59	UNIC 05A	14.0	C150F * F K4A
3/4"	4.62	6.24	8.74	4.51	4.66	2.00	2.99	.79	UNIC 05A	15.0	D150F * F K4A
1"	5.00	6.24	9.13	4.51	5.05	2.00	2.99	.98	UNIC 05A	17.5	E150F * F K4A
1-1/2"	6.50	6.24	9.73	4.51	5.65	2.00	2.99	1.50	UNIC 05A	24.5	G150F * F K4A
2"	7.00	8.17	12.39	4.82	5.90	2.14	4.33	1.97	UNIC 10A	36.0	H150F * F K4A

Note: Dimensions "C" & "E" include a 3" high mounting bracket

*C = Carbon Stl Body, 316SS Trim

*S = 316SS Body & Trim

150 VALVE SPECIFICATIONS

- 150F Class 150
- Standard Steam Working Pressure: 150SWP, optional 300PSIG
- Protected Seat Design
- Fire Safe Designed to API607-5
- Spiral Wound Body Gasket w/Secondary metal to metal seat
- Carbon Steel or Stainless Steel Body
- Seats: TFM
- Max Temp: TFM seats: 475°F

ELECTRIC ACTUATOR FEATURES

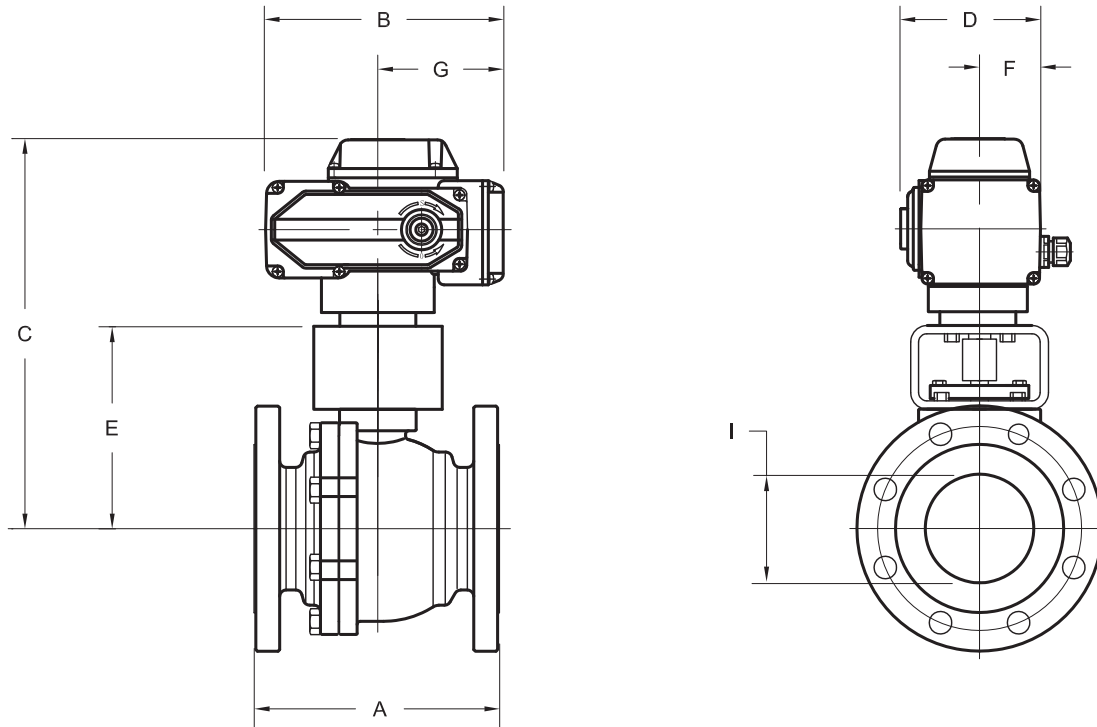
- K Series electric actuator
- Actuator speed: 25 sec.
- Most voltages available
- Quarter turn: 0-90° rotation
- NEMA 4/4X certified by UL labs
- ISO 5211 mounting standard
- Visual position indicator
- Self-locking drive train
- Mounts in any direction
- 1/2" NPT conduit connection
- CSA-NRTL /C and CE certified
- Temperature range: 0°F to 160°F

150F_F K4A 3 - 8

Full port ball valve with electric actuator

150# Flanged 2-pc body TFM Seats

Actuators are sized for 150 psi pressure differential



DIMENSIONS, WEIGHTS & SPECIFICATIONS

Size	A	B	C	D	E	F	G	I	Actuator	Wt.(lbs.)	Model No.
3"	8.00	10.10	13.95	6.16	6.67	2.46	5.25	3.00	UNIC 20A	65.5	J150F * F K4A
4"	9.00	10.10	15.68	6.16	8.40	2.46	5.25	4.00	UNIC 40A	90.0	K150F * F K4A
6"	15.50	15.00	20.41	9.53	11.20	4.13	7.85	5.98	UNIC 60A	221.2	M150F * F K4A
8"	18.00	15.00	20.81	9.98	11.60	4.13	7.85	7.87	UNIC 200A	324.9	N150F * F K4A

Note: Dimensions "C" & "E" include a 3" high mounting bracket on 3" valve and a 4" high mounting bracket on 4" - 8" valves

*C = Carbon Stl Body, 316SS Trim
*S = 316SS Body & Trim

150 VALVE SPECIFICATIONS

- 150F Class 150
- Standard Steam Working Pressure: 150SWP, optional 300PSIG
- Protected Seat Design
- Fire Safe Designed to API607-5
- Spiral Wound Body Gasket w/Secondary metal to metal seat
- Carbon Steel or Stainless Steel Body
- Seats: TFM
- Max Temp: TFM seats: 475°F

ELECTRIC ACTUATOR FEATURES

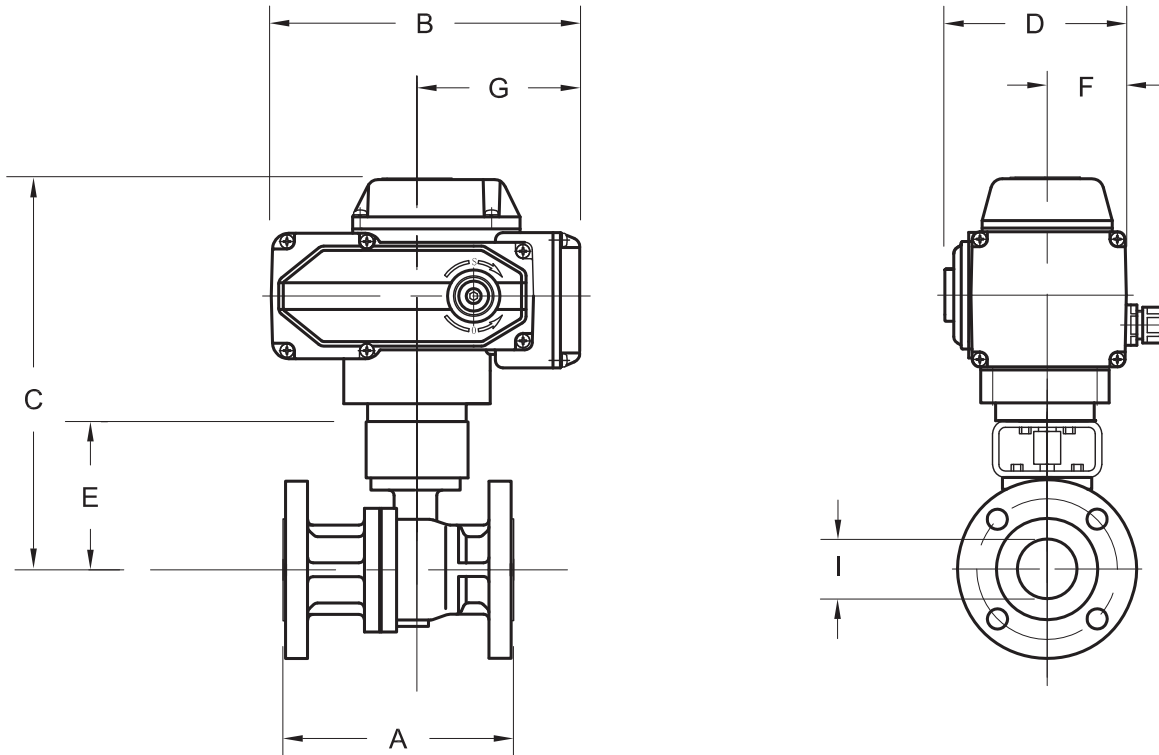
- K Series electric actuator
- Actuator speed: 25 sec.
- Most voltages available
- Quarter turn: 0-90° rotation
- NEMA 4/4X certified by UL labs
- ISO 5211 mounting standard
- Visual position indicator
- Self-locking drive train
- Mounts in any direction
- 1/2" NPT conduit connection
- CSA-NRTL /C and CE certified
- Temperature range: 0°F to 160°F

150F_S K4A .5 - 2

Full port ball valve with electric actuator

150# Flanged 2-pc body 50/50 Seats

Actuators are sized for 150 psi pressure differential



DIMENSIONS, WEIGHTS & SPECIFICATIONS

Size	A	B	C	D	E	F	G	I	Actuator	Wt.(lbs.)	Model No.
1/2"	4.25	6.24	9.25	4.51	4.54	2.00	2.99	.59	UNIC 05A	14.0	C150F * S K4A
3/4"	4.62	6.24	9.37	4.51	4.66	2.00	2.99	.79	UNIC 05A	15.0	D150F * S K4A
1"	5.00	6.24	9.76	4.51	5.05	2.00	2.99	.98	UNIC 05A	17.5	E150F * S K4A
1-1/2"	6.50	8.17	12.09	4.82	5.65	1.62	4.33	1.50	UNIC 10A	29.5	G150F * S K4A
2"	7.00	8.17	13.16	4.82	5.90	1.62	4.33	1.97	UNIC 10A	36.0	H150F * S K4A

Note: Dimensions "C" & "E" include a 3" high mounting bracket

*C = Carbon Stl Body, 316SS Trim
*S = 316SS Body & Trim

150 VALVE SPECIFICATIONS

- 150F Class 150
- Standard Steam Working Pressure: 150SWP, optional 300PSIG
- Protected Seat Design
- Fire Safe Designed to API607-5
- Spiral Wound Body Gasket w/Secondary metal to metal seat
- Carbon Steel or Stainless Steel Body
- Seats: 50/50
- Max Temp: 50/50 seats: 525°F

ELECTRIC ACTUATOR FEATURES

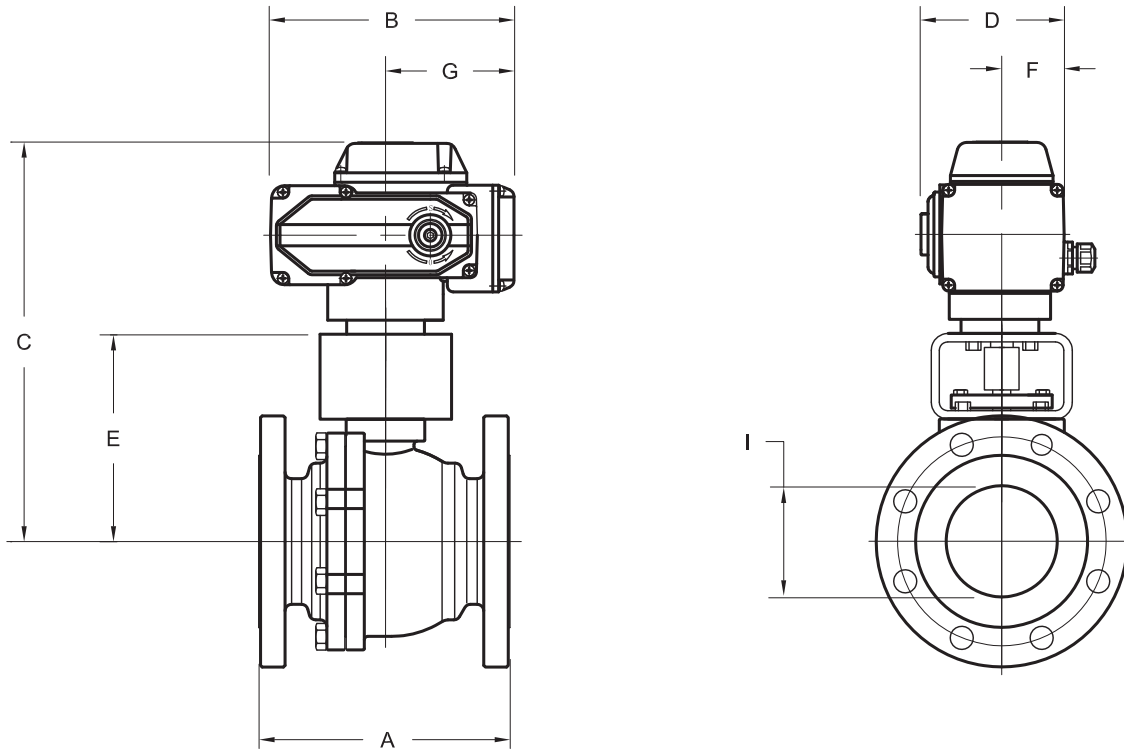
- K Series electric actuator
- Actuator speed: 25 sec.
- Most voltages available
- Quarter turn: 0-90° rotation
- NEMA 4/4X certified by UL labs
- ISO 5211 mounting standard
- Visual position indicator
- Self-locking drive train
- Mounts in any direction
- 1/2" NPT conduit connection
- CSA-NRTL /C and CE certified
- Temperature range: 0°F to 160°F

150F_S K4A 3 - 8

Full port ball valve with electric actuator

150# Flanged 2-pc body 50/50 Seats

Actuators are sized for 150 psi pressure differential



DIMENSIONS, WEIGHTS & SPECIFICATIONS

Size	A	B	C	D	E	F	G	I	Actuator	Wt.(lbs.)	Model No.
3"	8.00	10.10	13.95	6.16	6.67	2.46	5.25	3.00	UNIC 20A	65.5	J150F * S K4A
4"	9.00	15.00	15.68	6.16	8.40	2.46	5.25	4.00	UNIC 40A	90.0	K150F * S K4A
6"	15.50	15.00	20.41	9.53	11.20	4.13	7.85	5.98	UNIC 100A	222.7	M150F * S K4A
8"	18.00	15.00	20.81	9.98	11.60	4.13	7.85	7.87	UNIC 200A	324.9	N150F * S K4A

Note: Dimensions "C" & "E" include a 3" high mounting bracket on 3" valve and a 4" high mounting bracket on 4" - 8" valves

*C = Carbon Stl Body, 316SS Trim

*S = 316SS Body & Trim

150 VALVE SPECIFICATIONS

- 150F Class 150
- Standard Steam Working Pressure: 150SWP, optional 300PSIG
- Protected Seat Design
- Fire Safe Designed to API607-5
- Spiral Wound Body Gasket w/Secondary metal to metal seat
- Carbon Steel or Stainless Steel Body
- Seats: 50/50
- Max Temp: 50/50 seats: 525°F

ELECTRIC ACTUATOR FEATURES

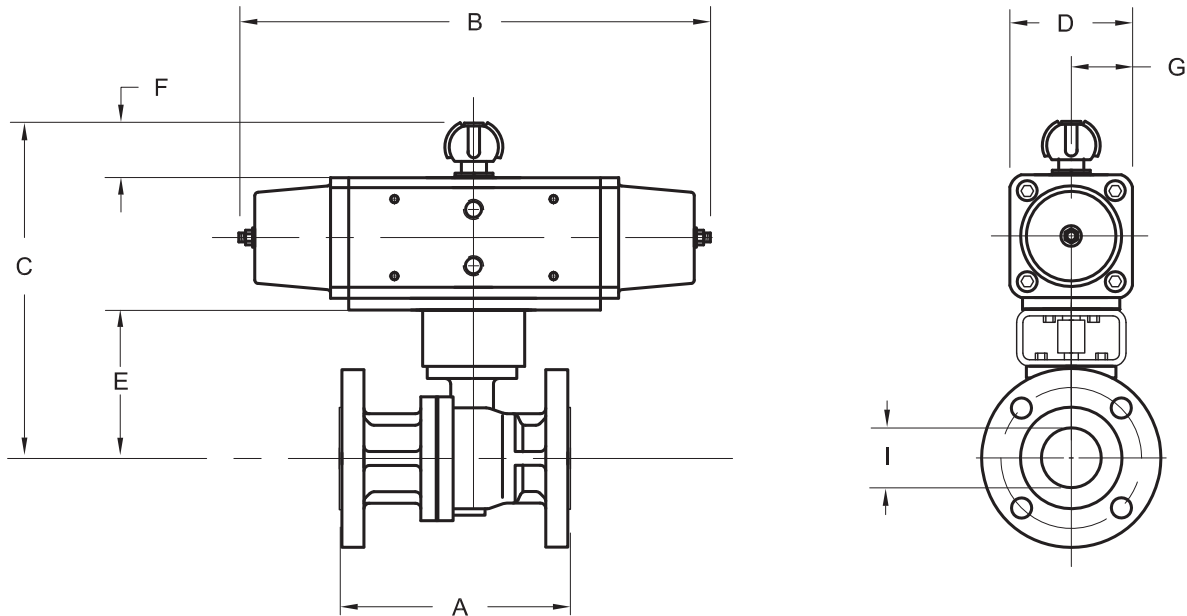
- K Series electric actuator
- Actuator speed: 25 sec.
- Most voltages available
- Quarter turn: 0-90° rotation
- NEMA 4/4X certified by UL labs
- ISO 5211 mounting standard
- Visual position indicator
- Self-locking drive train
- Mounts in any direction
- 1/2" NPT conduit connection
- CSA-NRTL /C and CE certified
- Temperature range: 0°F to 160°F

300F_F OSR .5 - 2

Full port ball valve with spring return pneumatic actuator

300# Flanged 2-pc body TFM Seats

Actuators are sized for 150 psi pressure differential



DIMENSIONS, WEIGHTS & SPECIFICATIONS

Size	A	B	C	D	E	F	G	I	Actuator	Wt.(lbs.)	Model No.
80 psig Minimum Actuator Air Supply = 8S											
1/2"	5.50	8.71	7.77	2.17	4.54	.79	1.08	.59	PS015	12.9	C300F * F O8S ①
3/4"	6.00	9.45	8.24	2.56	4.70	.79	1.28	.79	PS030	16.4	D300F * F O8S ①
1"	6.50	9.45	8.60	2.56	5.06	.79	1.28	.98	PS030	19.4	E300F * F O8S ①
1-1/2"	7.50	12.60	10.21	3.15	5.65	1.18	1.57	1.50	PS060	31.7	G300F * F O8S ①
2"	8.50	14.06	10.86	3.54	5.90	1.18	1.77	1.97	PS090	40.1	H300F * F O8S ①
60 psig Minimum Actuator Air Supply = 6S											
1/2"	5.50	9.45	8.08	2.56	4.54	.79	1.28	.59	PS030	14.4	C300F * F O6S ①
3/4"	6.00	9.45	8.24	2.56	4.70	.79	1.28	.79	PS030	16.4	D300F * F O6S ①
1"	6.50	9.45	8.60	2.56	5.06	.79	1.28	.98	PS030	19.4	E300F * F O6S ①
1-1/2"	7.50	14.06	10.61	3.54	5.65	1.18	1.77	1.50	PS090	34.1	G300F * F O6S ①
2"	8.50	14.06	10.86	3.54	5.90	1.18	1.77	1.97	PS090	40.1	H300F * F O6S ①

Note: Dimensions "C" & "E" include a 3" high mounting bracket

*C = Carbon Stl Body, 316SS Trim

*S = 316SS Body & Trim

① C=Fail Close, O=Fail Open

300 VALVE SPECIFICATIONS

- 300F Class 300
- Standard Steam Working Pressure: 150SWP, optional 300PSIG
- Protected Seat Design
- Fire Safe Designed to API607-5
- Spiral Wound Body Gasket w/Secondary metal to metal seat
- Carbon Steel or Stainless Steel Body
- Seats: TFM
- Max Temp: TFM seats: 475°F

PNEUMATIC ACTUATOR FEATURES

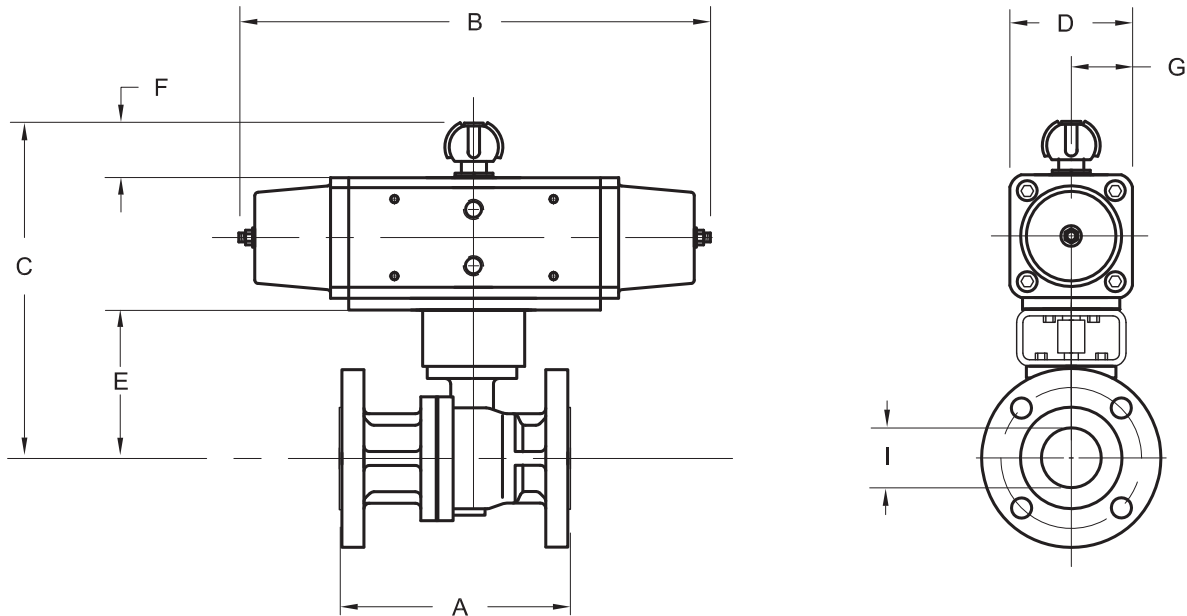
- O Series spring return pneumatic actuator
- Corrosion resistant coating
- NAMUR solenoid mounting pad, ISO 5211 mounting standard
- Visual position indicator
- High duty cycle, permanent lubrication
- Temperature range: -4°F to 175°F

300F_S OSR .5 - 2

Full port ball valve with spring return pneumatic actuator

300# Flanged 2-pc body 50/50 Seats

Actuators are sized for 150 psi pressure differential



DIMENSIONS, WEIGHTS & SPECIFICATIONS

Size	A	B	C	D	E	F	G	I	Actuator	Wt.(lbs.)	Model No.
80 psig Minimum Actuator Air Supply = 8S											
1/2"	5.50	9.45	8.08	2.56	4.54	.79	1.28	.59	PS030	14.4	C300F * S O8S ①
3/4"	6.00	9.45	8.24	2.56	4.70	.79	1.28	.79	PS030	16.4	D300F * S O8S ①
1"	6.50	9.45	8.60	2.56	5.06	.79	1.28	.98	PS030	19.4	E300F * S O8S ①
1-1/2"	7.50	14.06	10.61	3.54	5.65	1.18	1.77	1.50	PS090	34.1	G300F * S O8S ①
2"	8.50	14.65	11.25	3.94	5.90	1.18	1.97	1.97	PS120	44.7	H300F * S O8S ①
60 psig Minimum Actuator Air Supply = 6S											
1/2"	5.50	9.45	8.08	2.56	4.54	.79	1.28	.59	PS030	14.4	C300F * S O6S ①
3/4"	6.00	11.58	8.54	2.83	4.70	.79	1.41	.79	PS045	17.3	D300F * S O6S ①
1"	6.50	11.58	8.90	2.83	5.06	.79	1.41	.98	PS045	20.3	E300F * S O6S ①
1-1/2"	7.50	14.65	11.00	3.94	5.65	1.18	1.97	1.50	PS120	38.7	G300F * S O6S ①
2"	8.50	17.18	11.72	4.41	5.90	1.18	2.20	1.97	PS180	50.7	H300F * S O6S ①

Note: Dimensions "C" & "E" include a 3" high mounting bracket

*C = Carbon Stl Body, 316SS Trim

*S = 316SS Body & Trim

① C=Fail Close, O=Fail Open

300 VALVE SPECIFICATIONS

- 300F Class 300
- Standard Steam Working Pressure: 150SWP, optional 300PSIG
- Protected Seat Design
- Fire Safe Designed to API607-5
- Spiral Wound Body Gasket w/Secondary metal to metal seat
- Carbon Steel or Stainless Steel Body
- Seats: 50/50
- Max Temp: 50/50 seats: 525°F

PNEUMATIC ACTUATOR FEATURES

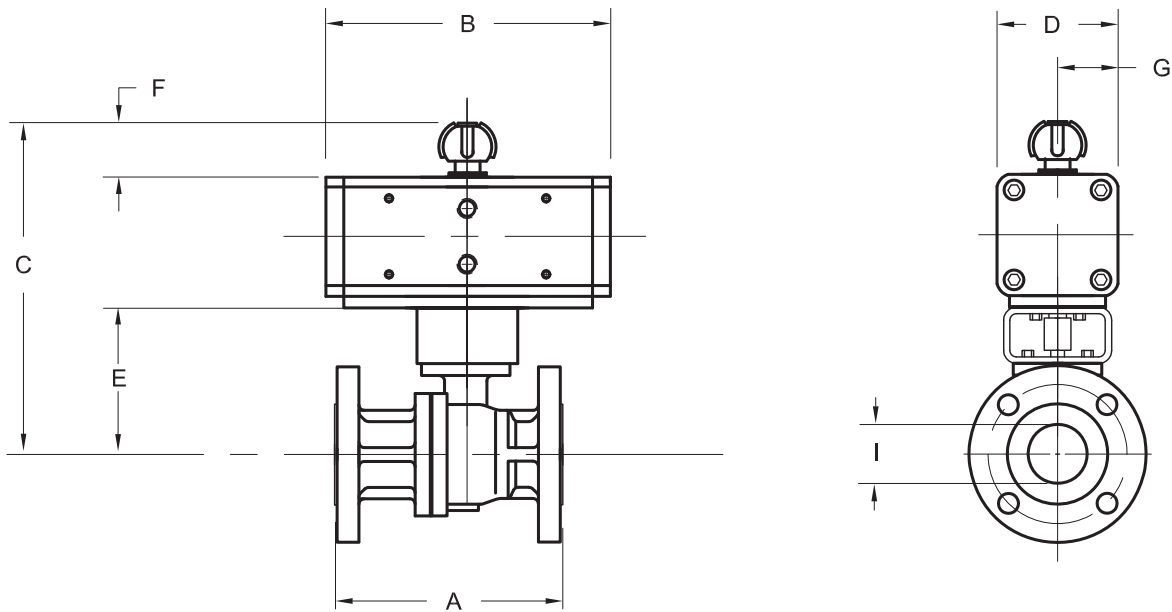
- O Series spring return pneumatic actuator
- Corrosion resistant coating
- NAMUR solenoid mounting pad, ISO 5211 mounting standard
- Visual position indicator
- High duty cycle, permanent lubrication
- Temperature range: -4°F to 175°F

300F_F ODA .5 - 2

Full port ball valve with double acting pneumatic actuator

300# Flanged 2-pc body TFM Seats

Actuators are sized for 150 psi pressure differential



DIMENSIONS, WEIGHTS & SPECIFICATIONS

Size	A	B	C	D	E	F	G	I	Actuator	Wt.(lbs.)	Model No.
80 psig Minimum Actuator Air Supply = 8D											
1/2"	5.50	5.12	7.69	2.17	4.54	.79	1.08	.59	PD030	12.2	C300F * F O8D
3/4"	6.00	5.12	7.85	2.17	4.70	.79	1.08	.79	PD030	14.2	D300F * F O8D
1"	6.50	5.12	8.21	2.17	5.06	.79	1.08	.98	PD030	17.2	E300F * F O8D
1-1/2"	7.50	5.98	9.19	2.56	5.65	.79	1.28	1.50	PD060	27.4	G300F * F O8D
2"	8.50	6.65	9.74	2.83	5.90	.79	1.41	1.97	PD090	34.1	H300F * F O8D
60 psig Minimum Actuator Air Supply = 6D											
1/2"	5.50	5.12	7.69	2.17	4.54	.79	1.08	.59	PD030	12.2	C300F * F O6D
3/4"	6.00	5.12	7.85	2.17	4.70	.79	1.08	.79	PD030	14.2	D300F * F O6D
1"	6.50	5.12	8.21	2.17	5.06	.79	1.08	.98	PD030	17.2	E300F * F O6D
1-1/2"	7.50	6.65	9.49	2.83	5.65	.79	1.41	1.50	PD090	28.1	G300F * F O6D
2"	8.50	7.24	10.46	3.15	5.90	1.18	1.57	1.97	PD120	36.2	H300F * F O6D

Note: Dimensions "C" & "E" include a 3" high mounting bracket

*C = Carbon Stl Body, 316SS Trim

*S = 316SS Body & Trim

300 VALVE SPECIFICATIONS

- 300F Class 300
- Standard Steam Working Pressure: 150SWP, optional 300PSIG
- Protected Seat Design
- Fire Safe Designed to API607-5
- Spiral Wound Body Gasket w/Secondary metal to metal seat
- Carbon Steel or Stainless Steel Body
- Seats: TFM
- Max Temp: TFM seats: 475°F

PNEUMATIC ACTUATOR FEATURES

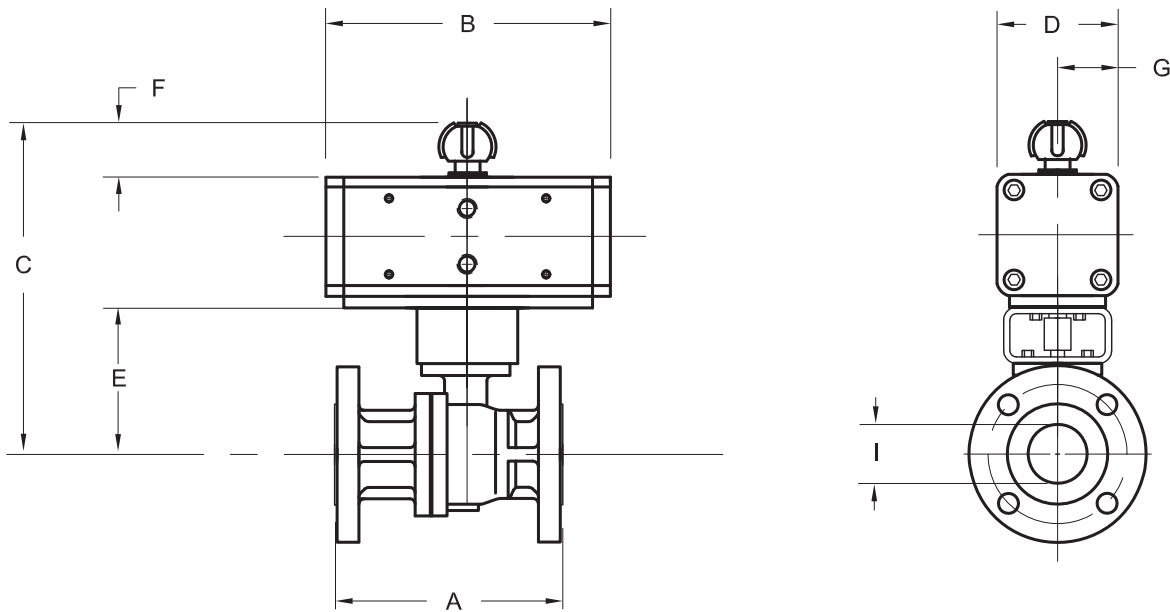
- O Series double acting pneumatic actuator
- Corrosion resistant coating
- NAMUR solenoid mounting pad, ISO 5211 mounting standard
- Visual position indicator
- High duty cycle, permanent lubrication
- Temperature range: -4°F to 175°F

300F_S ODA .5 - 2

Full port ball valve with double acting pneumatic actuator

300# Flanged 2-pc body 50/50 Seats

Actuators are sized for 150 psi pressure differential



DIMENSIONS, WEIGHTS & SPECIFICATIONS

Size	A	B	C	D	E	F	G	I	Actuator	Wt.(lbs.)	Model No.
80 psig Minimum Actuator Air Supply = 8D											
1/2"	5.50	5.12	7.69	2.17	4.54	.79	1.08	.59	PD030	12.2	C300F * S O8D
3/4"	6.00	5.12	7.85	2.17	4.70	.79	1.08	.79	PD030	14.2	D300F * S O8D
1"	6.50	5.67	8.43	2.36	5.06	.79	1.18	.98	PD045	17.8	E300F * S O8D
1-1/2"	7.50	5.98	9.49	2.83	5.65	.79	1.41	1.50	PD090	28.1	G300F * S O8D
2"	8.50	7.24	10.46	3.15	5.90	1.18	1.57	1.97	PD120	36.2	H300F * S O8D
60 psig Minimum Actuator Air Supply = 6D											
1/2"	5.50	5.12	7.69	2.17	4.54	.79	1.08	.59	PD030	12.2	C300F * S O6D
3/4"	6.00	5.67	8.07	2.36	4.70	.79	1.08	.79	PD045	14.8	D300F * S O6D
1"	6.50	5.67	8.43	2.36	5.06	.79	1.08	.98	PD045	17.8	E300F * S O6D
1-1/2"	7.50	7.24	10.21	3.15	5.65	1.18	1.57	1.50	PD120	30.2	G300F * S O6D
2"	8.50	8.35	10.86	3.54	5.90	1.18	1.77	1.97	PD180	37.5	H300F * S O6D

Note: Dimensions "C" & "E" include a 3" high mounting bracket

*C = Carbon Stl Body, 316SS Trim
*S = 316SS Body & Trim

300 VALVE SPECIFICATIONS

- 300F Class 300
- Standard Steam Working Pressure: 150SWP, optional 300PSIG
- Protected Seat Design
- Fire Safe Designed to API607-5
- Spiral Wound Body Gasket w/Secondary metal to metal seat
- Carbon Steel or Stainless Steel Body
- Seats: 50/50
- Max Temp: 50/50 seats: 525°F

PNEUMATIC ACTUATOR FEATURES

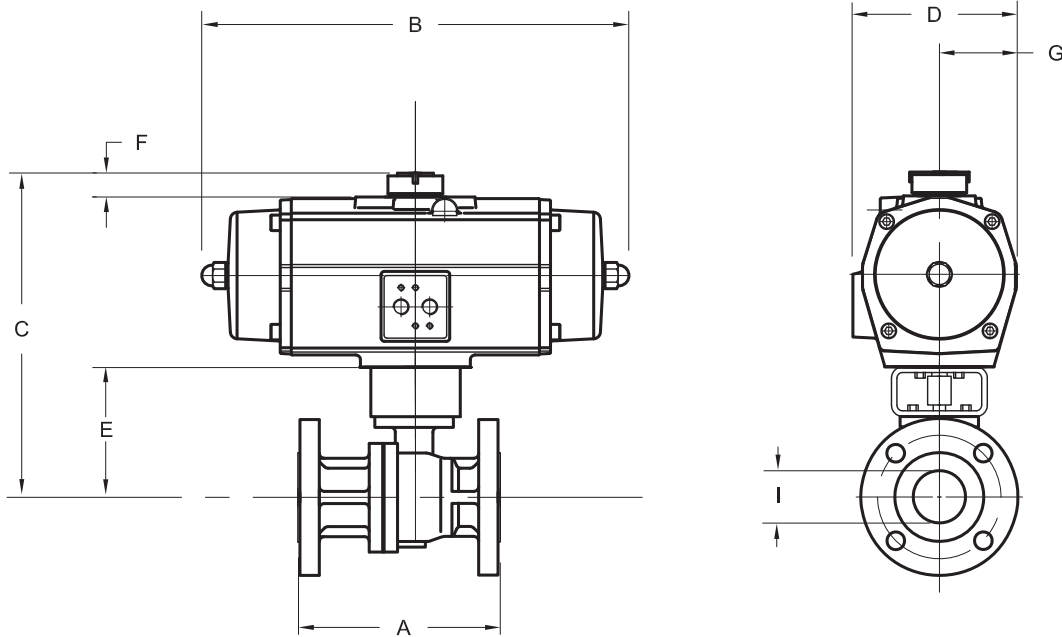
- O Series double acting pneumatic actuator
- Corrosion resistant coating
- NAMUR solenoid mounting pad, ISO 5211 mounting standard
- Visual position indicator
- High duty cycle, permanent lubrication
- Temperature range: -4°F to 175°F

300F_F ESR .5 - 2

Full port ball valve with spring return pneumatic actuator

300# Flanged 2-pc body TFM Seats

Actuators are sized for 150 psi pressure differential



DIMENSIONS, WEIGHTS & SPECIFICATIONS

Size	A	B	C	D	E	F	G	I	Actuator	Wt.(lbs.)	Model No.
80 psig Minimum Actuator Air Supply = 8S											
1/2"	5.50	8.03	8.99	3.78	4.54	.79	1.70	.59	ES40	15.3	C300F * F E8S ①
3/4"	6.00	8.03	9.15	3.78	4.70	.79	1.70	.79	ES40	16.8	D300F * F E8S ①
1"	6.50	8.03	9.51	3.78	5.06	.79	1.70	.98	ES40	20.3	E300F * F E8S ①
1-1/2"	7.50	10.51	11.09	4.60	5.65	.79	2.12	1.50	ES100	34.1	G300F * F E8S ①
2"	8.50	14.17	12.32	5.39	5.90	.79	2.52	1.97	ES200	50.1	H300F * F E8S ①
60 psig Minimum Actuator Air Supply = 6S											
1/2"	5.50	9.80	9.46	4.19	4.54	.79	1.93	.59	ES65	17.9	C300F * F E6S ①
3/4"	6.00	9.80	9.62	4.19	4.70	.79	1.93	.79	ES65	19.9	D300F * F E6S ①
1"	6.50	9.80	9.98	4.19	5.06	.79	1.93	.98	ES65	22.9	E300F * F E6S ①
1-1/2"	7.50	14.17	12.07	5.39	5.65	.79	2.52	1.50	ES200	44.1	G300F * F E6S ①
2"	8.50	14.17	12.32	5.39	5.90	.79	2.52	1.97	ES200	50.1	H300F * F E6S ①

Note: Dimensions "C" & "E" include a 3" high mounting bracket

*C = Carbon Stl Body, 316SS Trim

*S = 316SS Body & Trim

① C=Fail Close, O=Fail Open

300 VALVE SPECIFICATIONS

- 300F Class 300
- Standard Steam Working Pressure: 150SWP, optional 300PSIG
- Protected Seat Design
- Fire Safe Designed to API607-5
- Spiral Wound Body Gasket w/Secondary metal to metal seat
- Carbon Steel or Stainless Steel Body
- Seats: TFM
- Max Temp: TFM seats: 475°F

PNEUMATIC ACTUATOR FEATURES

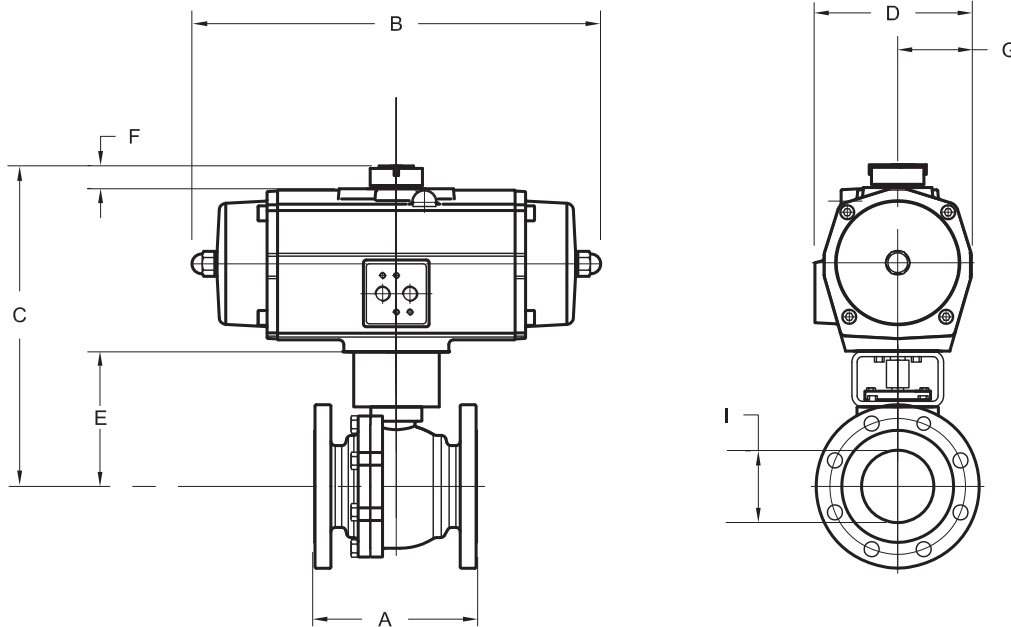
- E Series spring return rack and pinion pneumatic actuator
- Corrosion resistant coating
- NAMUR solenoid mounting pad, ISO 5211 mounting standard
- Visual position indicator
- High duty cycle, permanent lubrication
- Temperature range: -4°F to 175°F

300F_F ESR 3 - 8

Full port ball valve with spring return pneumatic actuator

300# Flanged 2-pc body TFM Seats

Actuators are sized for 150 psi pressure differential



DIMENSIONS, WEIGHTS & SPECIFICATIONS

Size	A	B	C	D	E	F	G	I	Actuator	Wt.(lbs.)	Model No.
80 psig Minimum Actuator Air Supply = 8S											
3"	11.12	15.24	14.59	7.12	6.67	.79	3.41	3.00	ES350	102.3	J300F * F E8S ①
4"	12.00	18.78	18.24	8.52	8.40	1.18	4.08	4.00	ES600	163.8	K300F * F E8S ①
6"	15.88	25.08	24.07	10.81	11.20	1.18	5.21	5.98	ES1600	276.1	M300F * F E8S ①
8"	19.75	32.83	27.74	15.35	11.60	1.18	7.48	7.87	PS4000	672.0	N300F * F E8S ①
60 psig Minimum Actuator Air Supply = 6S											
3"	11.12	18.78	16.51	8.52	6.67	1.18	4.08	3.00	ES600	125.8	J300F * F E6S ①
4"	12.00	18.78	18.24	8.52	8.40	1.18	4.08	4.00	ES600	163.8	K300F * F E6S ①
6"	15.88	22.44	26.40	14.17	11.20	1.18	6.89	5.98	PS2500	425.0	M300F * F E6S ①
8"	19.75	32.83	27.74	15.35	11.60	1.18	7.48	7.87	PS4000	672.0	N300F * F E6S ①

Note: Dimensions "C" & "E" include a 3" high mounting bracket on 3" valve and a 4" high mounting bracket on 4" - 8" valves

*C = Carbon Stl Body, 316SS Trim
*S = 316SS Body & Trim
① C=Fail Close, O=Fail Open

300 VALVE SPECIFICATIONS

- 300F Class 300
- Standard Steam Working Pressure: 150SWP, optional 300PSIG
- Protected Seat Design
- Fire Safe Designed to API607-5
- Spiral Wound Body Gasket w/Secondary metal to metal seat
- Carbon Steel or Stainless Steel Body
- Seats: TFM
- Max Temp: TFM seats: 475°F

PNEUMATIC ACTUATOR FEATURES

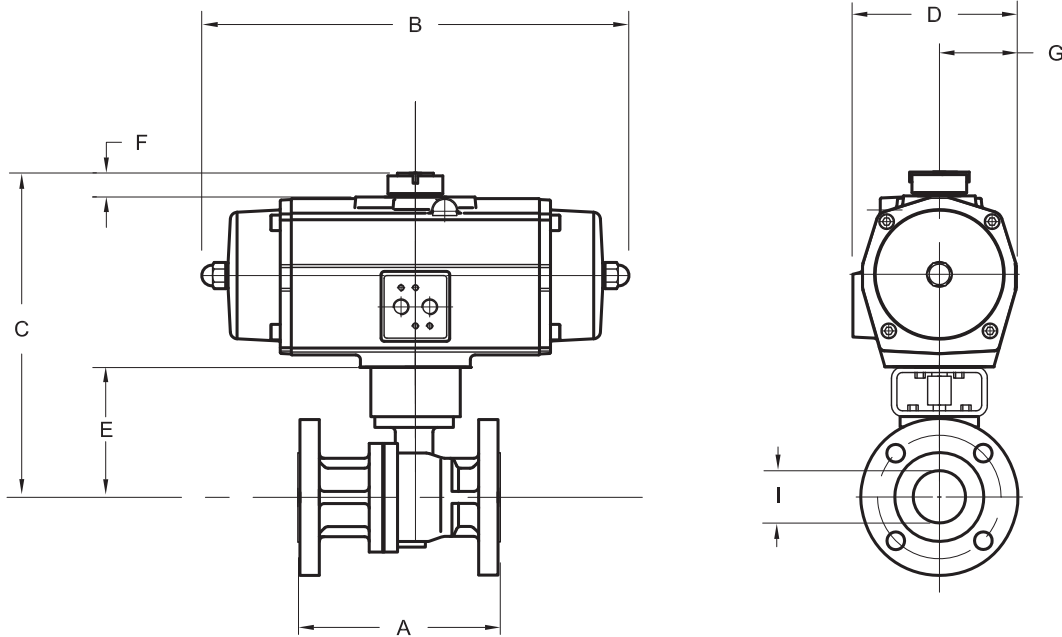
- E Series spring return rack and pinion pneumatic actuator
- Corrosion resistant coating
- NAMUR solenoid mounting pad, ISO 5211 mounting standard
- Visual position indicator
- High duty cycle, permanent lubrication
- Temperature range: -4°F to 175°F

300F_S ESR .5 - 2

Full port ball valve with spring return pneumatic actuator

300# Flanged 2-pc body 50/50 Seats

Actuators are sized for 150 psi pressure differential



DIMENSIONS, WEIGHTS & SPECIFICATIONS

Size	A	B	C	D	E	F	G	I	Actuator	Wt.(lbs.)	Model No.
80 psig Minimum Actuator Air Supply = 8S											
1/2"	5.50	8.03	8.99	3.78	4.54	.79	1.70	.59	ES40	15.3	C300F * S E8S ①
3/4"	6.00	9.80	9.62	4.19	4.70	.79	1.93	.79	ES65	19.9	D300F * S E8S ①
1"	6.50	9.80	9.98	4.19	5.06	.79	1.93	.98	ES65	22.9	E300F * S E8S ①
1-1/2"	7.50	14.17	12.07	5.39	5.65	.79	2.52	1.50	ES200	44.1	G300F * S E8S ①
2"	8.50	14.17	12.32	5.39	5.90	.79	2.52	1.97	ES200	50.1	H300F * S E8S ①
60 psig Minimum Actuator Air Supply = 6S											
1/2"	5.50	6.77	9.46	3.26	4.54	.79	1.93	.59	ES65	17.9	C300F * S E6S ①
3/4"	6.00	8.03	9.62	3.78	4.70	.79	1.93	.79	ES65	19.9	D300F * S E6S ①
1"	6.50	9.80	9.98	4.19	5.06	.79	1.93	.98	ES65	22.9	E300F * S E6S ①
1-1/2"	7.50	10.51	12.07	4.60	5.65	.79	2.52	1.50	ES200	44.1	G300F * S E6S ①
2"	8.50	14.17	13.82	5.39	5.90	.79	3.41	1.97	ES350	67.3	H300F * S E6S ①

Note: Dimensions "C" & "E" include a 3" high mounting bracket

*C = Carbon Stl Body, 316SS Trim

*S = 316SS Body & Trim

① C=Fail Close, O=Fail Open

300 VALVE SPECIFICATIONS

- 300F Class 300
- Standard Steam Working Pressure: 150SWP, optional 300PSIG
- Protected Seat Design
- Fire Safe Designed to API607-5
- Spiral Wound Body Gasket w/Secondary metal to metal seat
- Carbon Steel or Stainless Steel Body
- Seats: 50/50
- Max Temp: 50/50 seats: 525°F

PNEUMATIC ACTUATOR FEATURES

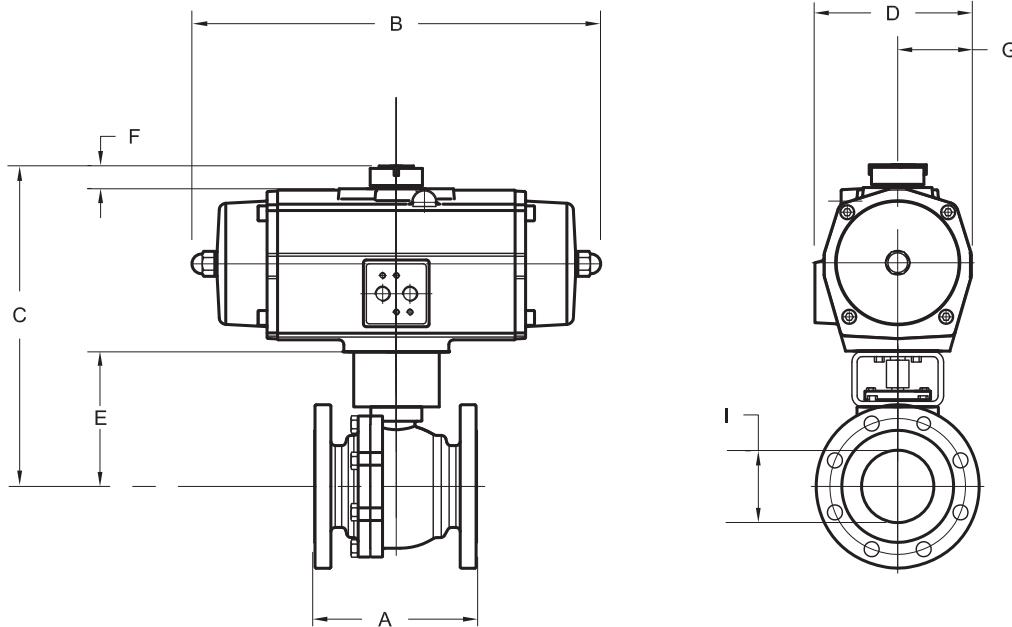
- E Series spring return rack and pinion pneumatic actuator
- Corrosion resistant coating
- NAMUR solenoid mounting pad, ISO 5211 mounting standard
- Visual position indicator
- High duty cycle, permanent lubrication
- Temperature range: -4°F to 175°F

300F_S ESR 3 - 8

Full port ball valve with spring return pneumatic actuator

300# Flanged 2-pc body 50/50 Seats

Actuators are sized for 150 psi pressure differential



DIMENSIONS, WEIGHTS & SPECIFICATIONS

Size	A	B	C	D	E	F	G	I	Actuator	Wt.(lbs.)	Model No.
80 psig Minimum Actuator Air Supply = 8S											
3"	11.12	15.24	14.59	7.12	6.67	.79	3.41	3.00	ES350	102.3	J300F * S E8S ①
4"	12.00	20.35	19.78	9.51	8.40	1.18	4.54	4.00	ES950	188.1	K300F * S E8S ①
6"	15.88	22.44	26.40	14.17	11.20	1.18	6.89	5.98	PS2500	425.0	M300F * S E8S ①
8"	19.75	32.83	27.74	15.35	11.60	1.18	7.48	7.87	PS4000	672.0	N300F * S E8S ①
60 psig Minimum Actuator Air Supply = 6S											
3"	11.12	18.78	16.51	8.52	6.67	1.18	4.08	3.00	ES600	125.8	J300F * S E6S ①
4"	12.00	20.35	19.78	9.51	8.40	1.18	4.54	4.00	ES950	188.1	K300F * S E6S ①
6"	15.88	22.44	26.40	14.17	11.20	1.18	6.89	5.98	PS2500	425.0	M300F * S E6S ①
8"									N/A		

Note: Dimensions "C" & "E" include a 3" high mounting bracket on 3" valve and a 4" high mounting bracket on 4" - 8" valves

*C = Carbon Stl Body, 316SS Trim
*S = 316SS Body & Trim
① C=Fail Close, O=Fail Open

300 VALVE SPECIFICATIONS

- 300F Class 300
- Standard Steam Working Pressure: 150SWP, optional 300PSIG
- Protected Seat Design
- Fire Safe Designed to API607-5
- Spiral Wound Body Gasket w/Secondary metal to metal seat
- Carbon Steel or Stainless Steel Body
- Seats: 50/50
- Max Temp: 50/50 seats: 525°F

PNEUMATIC ACTUATOR FEATURES

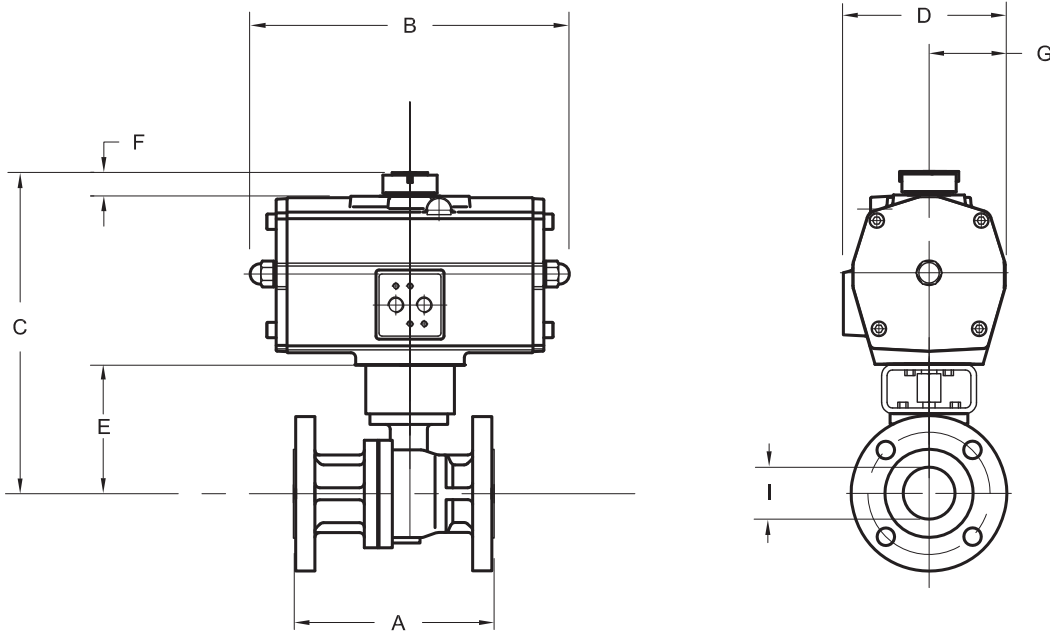
- E Series spring return rack and pinion pneumatic actuator
- Corrosion resistant coating
- NAMUR solenoid mounting pad, ISO 5211 mounting standard
- Visual position indicator
- High duty cycle, permanent lubrication
- Temperature range: -4°F to 175°F

300F_F EDA .5 - 2

Full port ball valve with double acting pneumatic actuator

300# Flanged 2-pc body TFM Seats

Actuators are sized for 150 psi pressure differential



DIMENSIONS, WEIGHTS & SPECIFICATIONS

Size	A	B	C	D	E	F	G	I	Actuator	Wt.(lbs.)	Model No.
80 psig Minimum Actuator Air Supply = 8D											
1/2"	5.50	6.26	8.48	3.26	4.54	.79	1.46	.59	ED25	12.9	C300F * F E8D
3/4"	6.00	6.26	8.64	3.26	4.70	.79	1.46	.79	ED25	14.9	D300F * F E8D
1"	6.50	6.26	9.00	3.26	5.06	.79	1.46	.98	ED25	17.9	E300F * F E8D
1-1/2"	7.50	7.09	10.10	3.78	5.65	.79	1.70	1.50	ED40	28.0	G300F * F E8D
2"	8.50	7.83	10.82	4.19	5.90	.79	1.93	1.97	ED65	35.3	H300F * F E8D
60 psig Minimum Actuator Air Supply = 6D											
1/2"	5.50	6.26	8.48	3.26	4.54	.79	1.46	.59	ED25	12.9	C300F * F E6D
3/4"	6.00	6.26	8.64	3.26	4.70	.79	1.46	.79	ED25	14.9	D300F * F E6D
1"	6.50	6.26	9.00	3.26	5.06	.79	1.46	.98	ED25	17.9	E300F * F E6D
1-1/2"	7.50	7.83	10.57	4.19	5.65	.79	1.93	1.50	ED65	29.3	G300F * F E6D
2"	8.50	7.83	10.82	4.19	5.90	.79	1.93	1.97	ED65	35.3	H300F * F E6D

Note: Dimensions "C" & "E" include a 3" high mounting bracket

*C = Carbon Stl Body, 316SS Trim

*S = 316SS Body & Trim

300 VALVE SPECIFICATIONS

- 300F Class 300
- Standard Steam Working Pressure: 150SWP, optional 300PSIG
- Protected Seat Design
- Fire Safe Designed to API607-5
- Spiral Wound Body Gasket w/Secondary metal to metal seat
- Carbon Steel or Stainless Steel Body
- Seats: TFM
- Max Temp: TFM seats: 475°F

PNEUMATIC ACTUATOR FEATURES

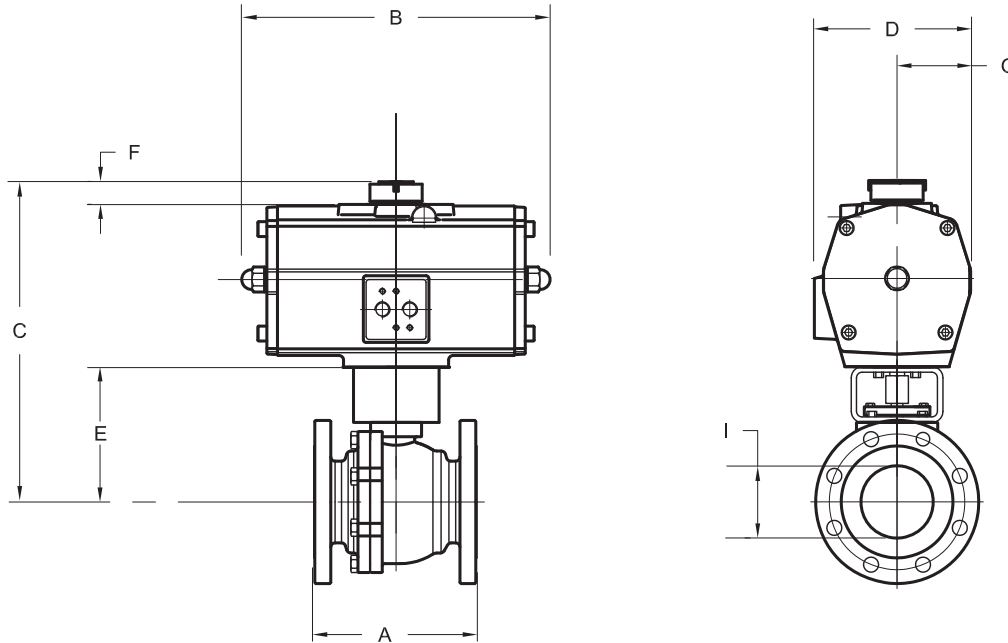
- E Series double acting rack and pinion pneumatic actuator
- Corrosion resistant coating
- NAMUR solenoid mounting pad, ISO 5211 mounting standard
- Visual position indicator
- High duty cycle, permanent lubrication
- Temperature range: -4°F to 175°F

300F_F EDA 3 - 8

Full port ball valve with double acting pneumatic actuator

300# Flanged 2-pc body TFM Seats

Actuators are sized for 150 psi pressure differential



DIMENSIONS, WEIGHTS & SPECIFICATIONS

Size	A	B	C	D	E	F	G	I	Actuator	Wt.(lbs.)	Model No.
80 psig Minimum Actuator Air Supply = 8D											
3"	11.12	11.14	13.09	5.39	6.67	.79	2.52	3.00	ED100	77.8	J300F * F E8D
4"	12.00	11.14	14.82	5.39	8.40	.79	2.52	4.00	ED200	115.8	K300F * F E8D
6"	15.88	15.24	21.04	8.52	11.20	1.18	4.08	5.98	ED600	273.8	M300F * F E8D
8"	19.75	20.31	24.47	10.81	11.60	1.18	5.21	7.87	ED1600	475.1	N300F * F E8D
60 psig Minimum Actuator Air Supply = 6D											
3"	11.12	11.14	13.09	5.39	6.67	.79	2.52	3.00	ED200	77.8	J300F * F E6D
4"	12.00	12.01	16.32	7.12	8.40	.79	3.41	4.00	ED350	125.9	K300F * F E6D
6"	15.88	16.69	22.58	9.51	11.20	1.18	4.54	5.98	ED950	289.2	M300F * F E6D
8"	19.75	20.31	24.47	10.81	11.60	1.18	5.21	7.87	ED1600	475.1	M300F * F E6D

Note: Dimensions "C" & "E" include a 3" high mounting bracket on 3" valve and a 4" high mounting bracket on 4" - 8" valves

*C = Carbon Stl Body, 316SS Trim
*S = 316SS Body & Trim

300 VALVE SPECIFICATIONS

- 300F Class 300
- Standard Steam Working Pressure: 150SWP, optional 300PSIG
- Protected Seat Design
- Fire Safe Designed to API607-5
- Spiral Wound Body Gasket w/Secondary metal to metal seat
- Carbon Steel or Stainless Steel Body
- Seats: TFM
- Max Temp: TFM seats: 475°F

PNEUMATIC ACTUATOR FEATURES

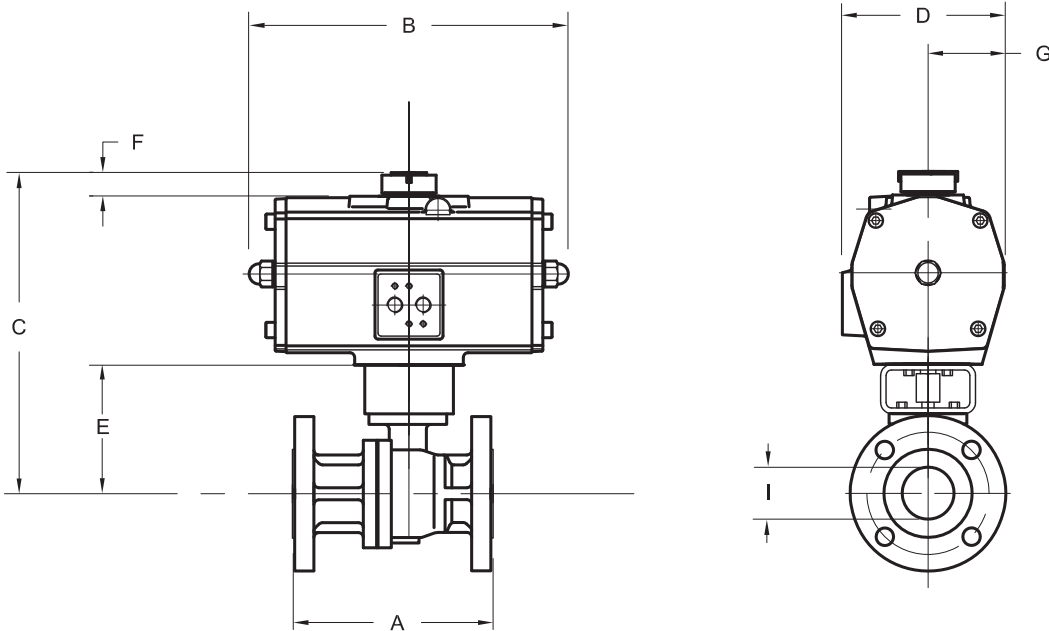
- E Series double acting rack and pinion pneumatic actuator
- Corrosion resistant coating
- NAMUR solenoid mounting pad, ISO 5211 mounting standard
- Visual position indicator
- High duty cycle, permanent lubrication
- Temperature range: -4°F to 175°F

300F_S EDA .5 - 2

Full port ball valve with double acting pneumatic actuator

300# Flanged 2-pc body 50/50 Seats

Actuators are sized for 150 psi pressure differential



DIMENSIONS, WEIGHTS & SPECIFICATIONS

Size	A	B	C	D	E	F	G	I	Actuator	Wt.(lbs.)	Model No.
80 psig Minimum Actuator Air Supply = 8D											
1/2"	5.50	6.26	8.48	3.26	4.54	.79	1.46	.59	ED25	12.9	C300F * S E8D
3/4"	6.00	6.26	8.64	3.26	4.70	.79	1.46	.79	ED25	14.9	D300F * S E8D
1"	6.50	6.26	9.00	3.26	5.06	.79	1.46	.98	ED25	17.9	E300F * S E8D
1-1/2"	7.50	7.83	10.57	4.19	5.65	.79	1.93	1.50	ED65	29.3	G300F * S E8D
2"	8.50	7.83	10.82	4.19	5.90	.79	1.93	1.97	ED65	35.3	H300F * S E8D
60 psig Minimum Actuator Air Supply = 6D											
1/2"	5.50	6.26	8.48	3.26	4.54	.79	1.46	.59	ED25	12.9	C300F * S E6D
3/4"	6.00	6.26	8.64	3.26	4.70	.79	1.70	.79	ED25	14.9	D300F * S E6D
1"	6.50	6.26	9.00	3.26	5.06	.79	1.93	.98	ED25	17.9	E300F * S E6D
1-1/2"	7.50	7.83	10.57	4.19	5.65	.79	1.93	1.50	ED65	29.3	G300F * S E6D
2"	8.50	8.70	11.34	4.60	5.90	.79	2.12	1.97	ED100	36.8	H300F * S E6D

Note: Dimensions "C" & "E" include a 3" high mounting bracket

*C = Carbon Stl Body, 316SS Trim
*S = 316SS Body & Trim

300 VALVE SPECIFICATIONS

- 300F Class 300
- Standard Steam Working Pressure: 150SWP, optional 300PSIG
- Protected Seat Design
- Fire Safe Designed to API607-5
- Spiral Wound Body Gasket w/Secondary metal to metal seat
- Carbon Steel or Stainless Steel Body
- Seats: 50/50
- Max Temp: 50/50 seats: 525°F

PNEUMATIC ACTUATOR FEATURES

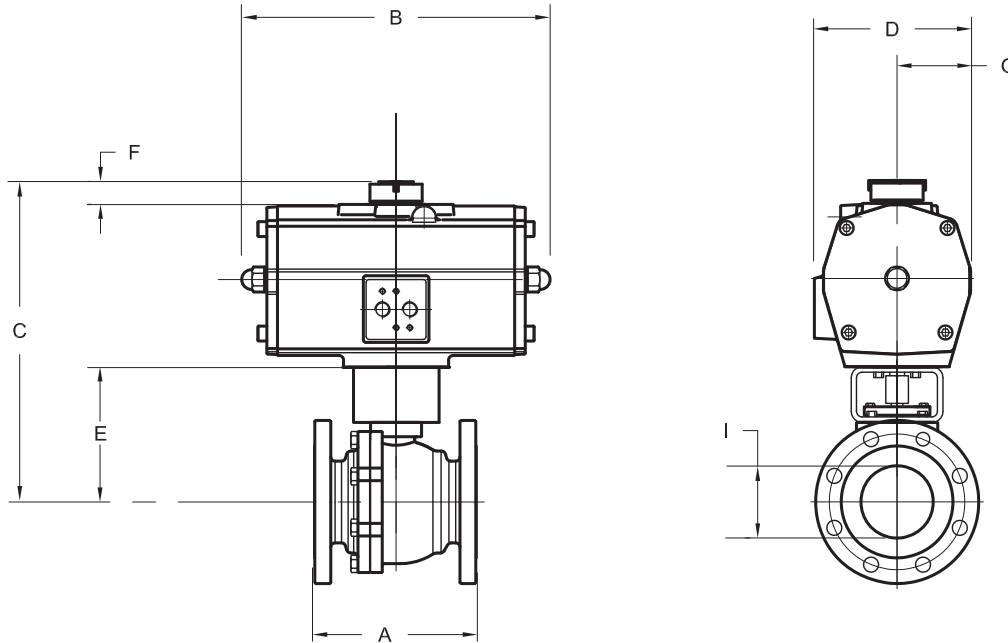
- E Series double acting rack and pinion pneumatic actuator
- Corrosion resistant coating
- NAMUR solenoid mounting pad, ISO 5211 mounting standard
- Visual position indicator
- High duty cycle, permanent lubrication
- Temperature range: -4°F to 175°F

300F_S EDA 3 - 8

Full port ball valve with double acting pneumatic actuator

300# Flanged 2-pc body 50/50 Seats

Actuators are sized for 150 psi pressure differential



DIMENSIONS, WEIGHTS & SPECIFICATIONS

Size	A	B	C	D	E	F	G	I	Actuator	Wt.(lbs.)	Model No.
80 psig Minimum Actuator Air Supply = 8D											
3"	11.12	11.14	13.09	5.39	6.67	.79	2.52	3.00	ED200	77.8	J300F * S E8D
4"	12.00	12.01	16.32	7.12	8.40	.79	3.41	4.00	ED350	125.9	K300F * S E8D
6"	15.88	16.69	22.58	9.51	11.20	1.18	4.54	5.98	ED950	289.2	M300F * S E8D
8"	19.75	20.31	24.47	10.81	11.60	1.18	5.21	7.87	ED1600	475.1	N300F * S E8D
60 psig Minimum Actuator Air Supply = 6D											
3"	11.12	11.14	13.09	5.39	6.67	.79	2.52	3.00	ED200	77.8	J300F * S E6D
4"	12.00	12.01	16.32	7.12	8.40	.79	3.41	4.00	ED350	125.9	K300F * S E6D
6"	15.88	20.31	24.07	10.81	11.20	1.18	5.21	5.98	ED1600	325.1	M300F * S E6D
8"	19.75	14.88	26.80	14.17	11.60	1.18	6.89	7.87	PD2500	506.0	M300F * S E6D

Note: Dimensions "C" & "E" include a 3" high mounting bracket on 3" valve and a 4" high mounting bracket on 4" - 8" valves

*C = Carbon Stl Body, 316SS Trim
*S = 316SS Body & Trim

300 VALVE SPECIFICATIONS

- 300F Class 300
- Standard Steam Working Pressure: 150SWP, optional 300PSIG
- Protected Seat Design
- Fire Safe Designed to API607-5
- Spiral Wound Body Gasket w/Secondary metal to metal seat
- Carbon Steel or Stainless Steel Body
- Seats: 50/50
- Max Temp: 50/50 seats: 525°F

PNEUMATIC ACTUATOR FEATURES

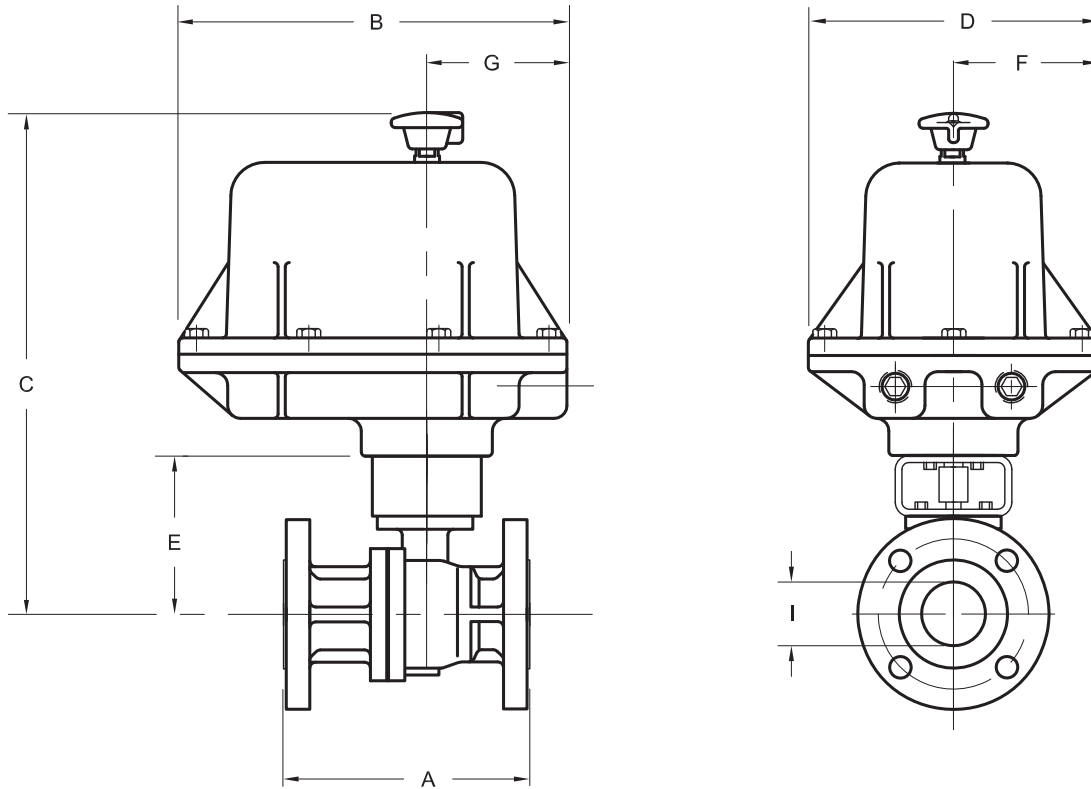
- E & P Series double acting rack and pinion pneumatic actuator
- Corrosion resistant coating
- NAMUR solenoid mounting pad, ISO 5211 mounting standard
- Visual position indicator
- High duty cycle, permanent lubrication
- Temperature range: -4°F to 175°F

300F_F B7A .5 - 2

Full port ball valve with electric actuator, NEMA 7, 120vac

300# Flanged 2-pc body TFM Seats

Actuators are sized for 150 psi pressure differential



DIMENSIONS, WEIGHTS & SPECIFICATIONS

Size	A	B	C	D	E	F	G	I	Actuator	Wt.(lbs.)	Model No.
1/2"	5.50	8.25	12.04	6.25	4.54	3.12	3.75	.59	EM310-30	27.0	C300F * F B7A
3/4"	6.00	8.25	12.16	6.25	4.66	3.12	3.75	.79	EM310-30	28.0	D300F * F B7A
1"	6.50	8.25	12.55	6.25	5.05	3.12	3.75	.98	EM310-30	30.5	E300F * F B7A
1-1/2"	7.50	8.25	13.10	6.25	5.60	3.12	3.75	1.50	EM310-30	37.5	G300F * F B7A
2"	8.50	8.25	13.40	6.25	5.90	3.12	3.75	1.97	EM310-30	44.0	H300F * F B7A

Note: Dimensions "C" & "E" include a 3" high mounting bracket

*C = Carbon Stl Body, 316SS Trim

*S = 316SS Body & Trim

300 VALVE SPECIFICATIONS

- 300F Class 300
- Standard Steam Working Pressure: 150SWP, optional 300PSIG
- Protected Seat Design
- Fire Safe Designed to API607-5
- Spiral Wound Body Gasket w/Secondary metal to metal seat
- Carbon Steel or Stainless Steel Body
- Seats: TFM
- Max Temp: TFM seats: 475°F

ELECTRIC ACTUATOR FEATURES

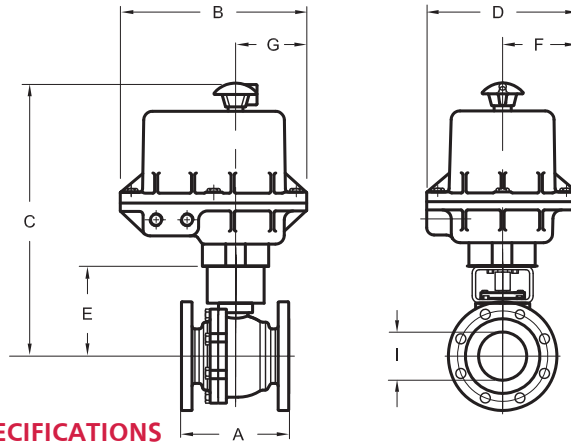
- B7 Series electric actuator
- NEMA 4, 4x, 7, & 9; CSA approved
- Weatherproof
- Class I Groups C and D, Div. 1
- Class II Groups E, F, & G
- (2) 1/2" NPT conduit entries
- Manual override
- Visual position Indicator
- CSA certified
- Temperature range: 0°F to 175°F

300F_F B7A 3 - 8

Full port ball valve with electric actuator, NEMA 7, 120vac

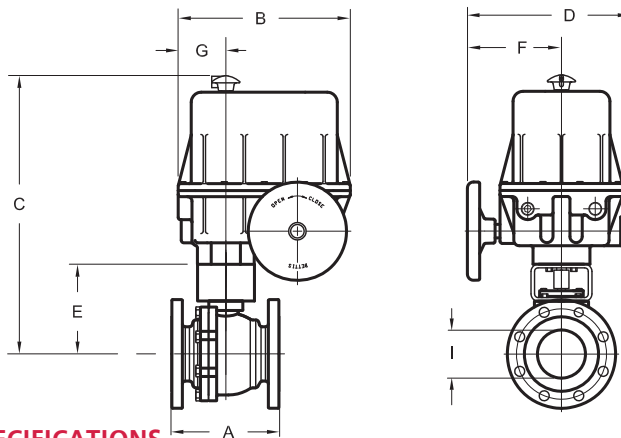
300# Flanged 2-pc body TFM Seats

Actuators are sized for 150 psi pressure differential



DIMENSIONS, WEIGHTS & SPECIFICATIONS

Size	A	B	C	D	E	F	G	I	Actuator	Wt.(lbs.)	Model No.
3"	11.12	9.75	16.11	7.75	6.67	3.88	3.75	3.00	EM500-30	83.0	J300F * F B7A



DIMENSIONS, WEIGHTS & SPECIFICATIONS

Size	A	B	C	D	E	F	G	I	Actuator	Wt.(lbs.)	Model No.
4"	12.00	14.00	23.72	13.31	8.40	7.62	3.88	4.00	EM810-30	263.0	K300F * F B7A
6"	15.88	14.00	23.72	13.31	11.20	7.62	3.88	5.98	EM820-30	391.0	M300F * F B7A
8"	19.75	14.00	23.72	13.31	11.60	7.62	3.88	7.87	EM840-48	541.0	N300F * F B7A

Note: Dimensions "C" & "E" include a 3" high mounting bracket on 3" valve and a 4" high mounting bracket on 4" - 8" valves

*C = Carbon Stl Body, 316SS Trim
*S = 316SS Body & Trim

300 VALVE SPECIFICATIONS

- 300F Class 300
- Standard Steam Working Pressure: 150SWP, optional 300PSIG
- Protected Seat Design
- Fire Safe Designed to API607-5
- Spiral Wound Body Gasket w/Secondary metal to metal seat
- Carbon Steel or Stainless Steel Body
- Seats: TFM
- Max Temp: TFM seats: 475°F

ELECTRIC ACTUATOR FEATURES

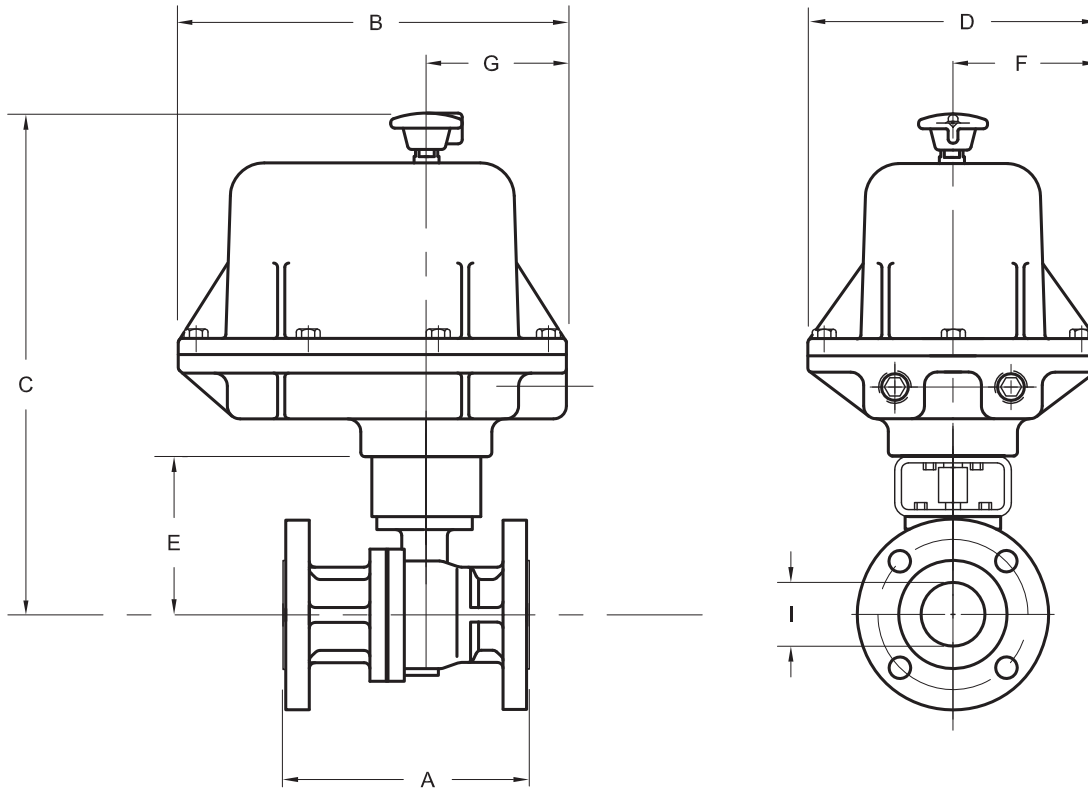
- B7 Series electric actuator
- NEMA 4, 4x, 7, & 9; CSA approved
- Weatherproof
- Class I Groups C and D, Div. 1
- Class II Groups E, F, & G
- (2) 1/2" NPT conduit entries
- Manual override
- Visual position Indicator
- CSA certified
- Temperature range: 0°F to 175°F

300F_S B7A .5 - 1.5

Full port ball valve with electric actuator, NEMA 7, 120vac

300# Flanged 2-pc body 50/50 Seats

Actuators are sized for 150 psi pressure differential



DIMENSIONS, WEIGHTS & SPECIFICATIONS

Size	A	B	C	D	E	F	G	I	Actuator	Wt.(lbs.)	Model No.
1/2"	5.50	8.25	12.04	6.25	4.54	3.12	3.75	.59	EM310-30	27.0	C300F * S B7A
3/4"	6.00	8.25	12.16	6.25	4.66	3.12	3.75	.79	EM310-30	28.0	D300F * S B7A
1"	6.50	8.25	12.55	6.25	5.05	3.12	3.75	.98	EM310-30	30.5	E300F * S B7A
1-1/2"	7.50	8.25	13.10	6.25	5.60	3.12	3.75	1.50	EM310-30	37.5	G300F * S B7A

Note: Dimensions "C" & "E" include a 3" high mounting bracket

*C = Carbon Stl Body, 316SS Trim
*S = 316SS Body & Trim

300 VALVE SPECIFICATIONS

- 300F Class 300
- Standard Steam Working Pressure: 150SWP, optional 300PSIG
- Protected Seat Design
- Fire Safe Designed to API607-5
- Spiral Wound Body Gasket w/Secondary metal to metal seat
- Carbon Steel or Stainless Steel Body
- Seats: 50/50
- Max Temp: 50/50 seats: 525°F

ELECTRIC ACTUATOR FEATURES

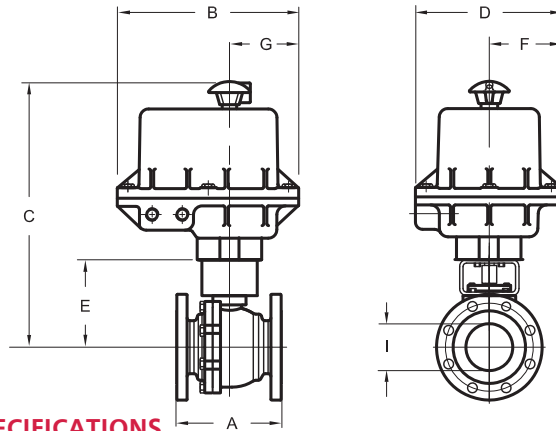
- B7 Series electric actuator
- NEMA 4, 4x, 7, & 9; CSA approved
- Weatherproof
- Class I Groups C and D, Div. 1
- Class II Groups E, F, & G
- (2) 1/2" NPT conduit entries
- Manual override
- Visual position Indicator
- CSA certified
- Temperature range: 0°F to 175°F

300F_S B7A 2 - 8

Full port ball valve with electric actuator, NEMA 7, 120vac

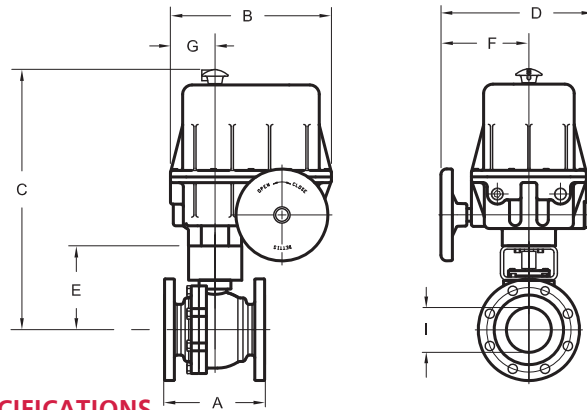
300# Flanged 2-pc body 50/50 Seats

Actuators are sized for 150 psi pressure differential



DIMENSIONS, WEIGHTS & SPECIFICATIONS

Size	A	B	C	D	E	F	G	I	Actuator	Wt.(lbs.)	Model No.
2"	8.50	8.25	15.34	6.25	5.90	3.12	3.75	1.97	EM520-15	48.0	H300F * S B7A



DIMENSIONS, WEIGHTS & SPECIFICATIONS

Size	A	B	C	D	E	F	G	I	Actuator	Wt.(lbs.)	Model No.
3"	11.12	14.00	16.11	13.31	6.67	7.62	3.88	3.00	EM810-15	225.0	J300F * S B7A
4"	12.00	14.00	23.72	13.31	8.40	7.62	3.88	4.00	EM810-30	263.0	K300F * S B7A
6"	15.88	14.00	23.72	13.31	11.20	7.62	3.88	5.98	EM830-30	391.0	M300F * S B7A
8"	19.75	14.00	23.72	13.31	11.60	7.62	3.88	7.87	EM840-72	541.0	N300F * S B7A

Note: Dimensions "C" & "E" include a 3" high mounting bracket on 2" & 3" valve and a 4" high mounting bracket on 4" - 8" valves

*C = Carbon Stl Body, 316SS Trim
*S = 316SS Body & Trim

300 VALVE SPECIFICATIONS

- 300F Class 300
- Standard Steam Working Pressure: 150SWP, optional 300PSIG
- Protected Seat Design
- Fire Safe Designed to API607-5
- Spiral Wound Body Gasket w/Secondary metal to metal seat
- Carbon Steel or Stainless Steel Body
- Seats: 50/50
- Max Temp: 50/50 seats: 525°F

ELECTRIC ACTUATOR FEATURES

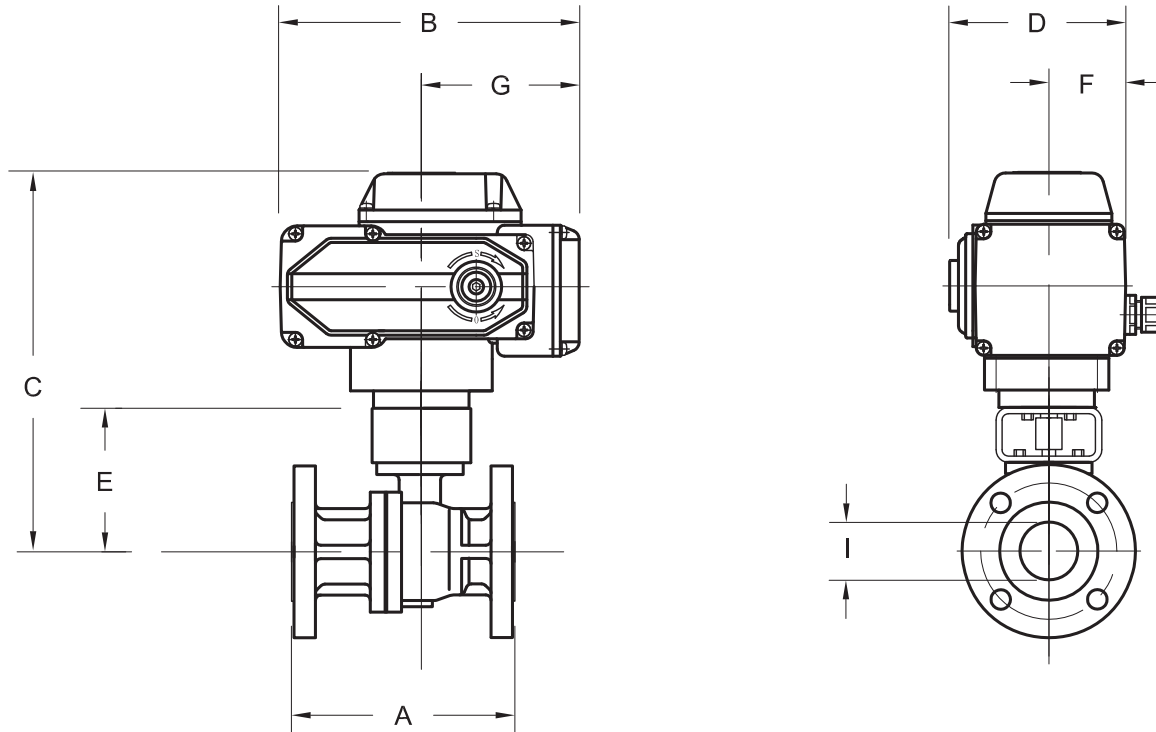
- B7 Series electric actuator
- NEMA 4, 4x, 7, & 9; CSA approved
- Weatherproof
- Class I Groups C and D, Div. 1
- Class II Groups E, F, & G
- (2) 1/2" NPT conduit entries
- Manual override
- Visual position Indicator
- CSA certified
- Temperature range: 0°F to 175°F

300F_F K4A .5 - 2

Full port ball valve with electric actuator

300# Flanged 2-pc body TFM Seats

Actuators are sized for 150 psi pressure differential



DIMENSIONS, WEIGHTS & SPECIFICATIONS

Size	A	B	C	D	E	F	G	I	Actuator	Wt.(lbs.)	Model No.
1/2"	5.50	6.24	8.62	4.51	4.54	2.00	2.99	.59	UNIC 05A	15.0	C300F * F K4A
3/4"	6.00	6.24	8.74	4.51	4.66	2.00	2.99	.79	UNIC 05A	17.0	D300F * F K4A
1"	6.50	6.24	9.13	4.51	5.05	2.00	2.99	.98	UNIC 05A	20.0	E300F * F K4A
1-1/2"	7.50	6.24	9.73	4.51	5.65	2.00	2.99	1.50	UNIC 05A	29.0	G300F * F K4A
2"	8.50	8.17	12.39	4.82	5.90	2.14	4.33	1.97	UNIC 10A	40.0	H300F * F K4A

Note: Dimensions "C" & "E" include a 3" high mounting bracket

*C = Carbon Stl Body, 316SS Trim

*S = 316SS Body & Trim

300 VALVE SPECIFICATIONS

- 300F Class 300
- Standard Steam Working Pressure: 150SWP, optional 300PSIG
- Protected Seat Design
- Fire Safe Designed to API607-5
- Spiral Wound Body Gasket w/Secondary metal to metal seat
- Carbon Steel or Stainless Steel Body
- Seats: TFM
- Max Temp: TFM seats: 475°F

ELECTRIC ACTUATOR FEATURES

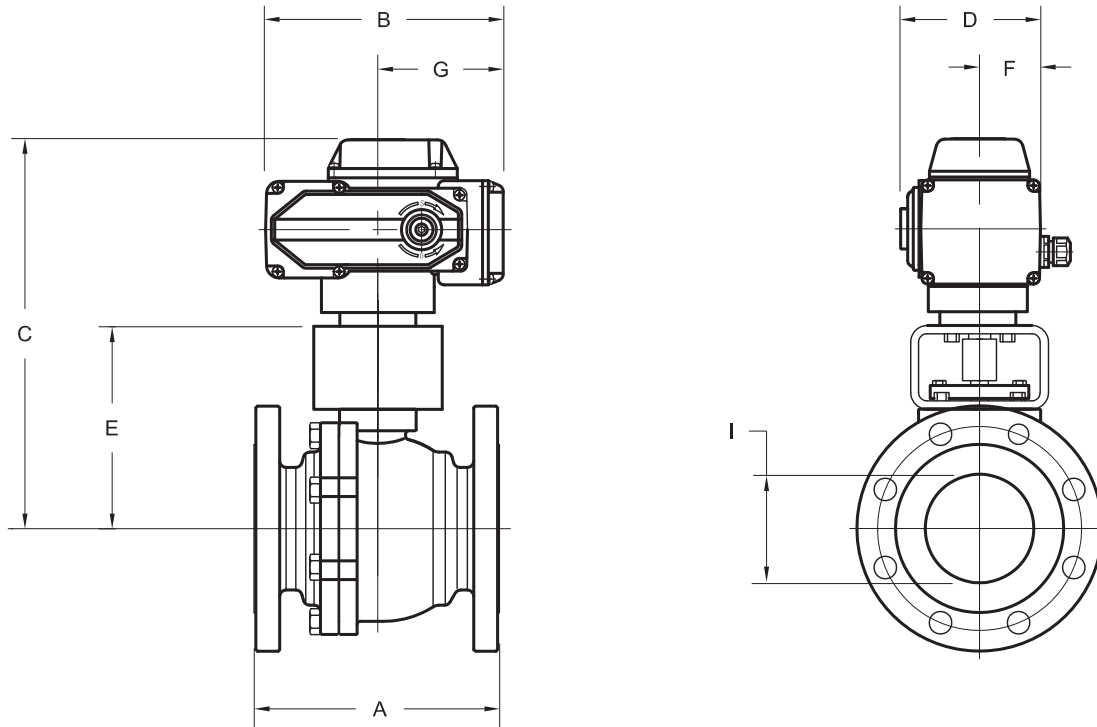
- K Series electric actuator
- Actuator speed: 25 sec.
- Most voltages available
- Quarter turn: 0-90° rotation
- NEMA 4/4X certified by UL labs
- ISO 5211 mounting standard
- Visual position indicator
- Self-locking drive train
- Mounts in any direction
- 1/2" NPT conduit connection
- CSA-NRTL /C and CE certified
- Temperature range: 0°F to 160°F

300F_F K4A 3 - 8

Full port ball valve with electric actuator

300# Flanged 2-pc body TFM Seats

Actuators are sized for 150 psi pressure differential



DIMENSIONS, WEIGHTS & SPECIFICATIONS

Size	A	B	C	D	E	F	G	I	Actuator	Wt.(lbs.)	Model No.
3"	11.12	10.10	13.95	6.16	6.67	2.46	5.25	3.00	UNIC 20A	83.0	J300F * F K4A
4"	12.00	10.10	15.68	6.16	8.40	2.46	5.25	4.00	UNIC 40A	121.0	K300F * F K4A
6"	15.88	15.00	20.41	9.53	11.20	4.13	7.85	5.98	UNIC 60A	277.2	M300F * F K4A
8"	19.75	15.00	20.81	9.98	11.60	4.13	7.85	7.87	UNIC 200A	433.9	N300F * F K4A

Note: Dimensions "C" & "E" include a 3" high mounting bracket on 3" valve and a 4" high mounting bracket on 4" - 8" valves

*C = Carbon Stl Body, 316SS Trim
*S = 316SS Body & Trim

300 VALVE SPECIFICATIONS

- 300F Class 300
- Standard Steam Working Pressure: 150SWP, optional 300PSIG
- Protected Seat Design
- Fire Safe Designed to API607-5
- Spiral Wound Body Gasket w/Secondary metal to metal seat
- Carbon Steel or Stainless Steel Body
- Seats: TFM
- Max Temp: TFM seats: 475°F

ELECTRIC ACTUATOR FEATURES

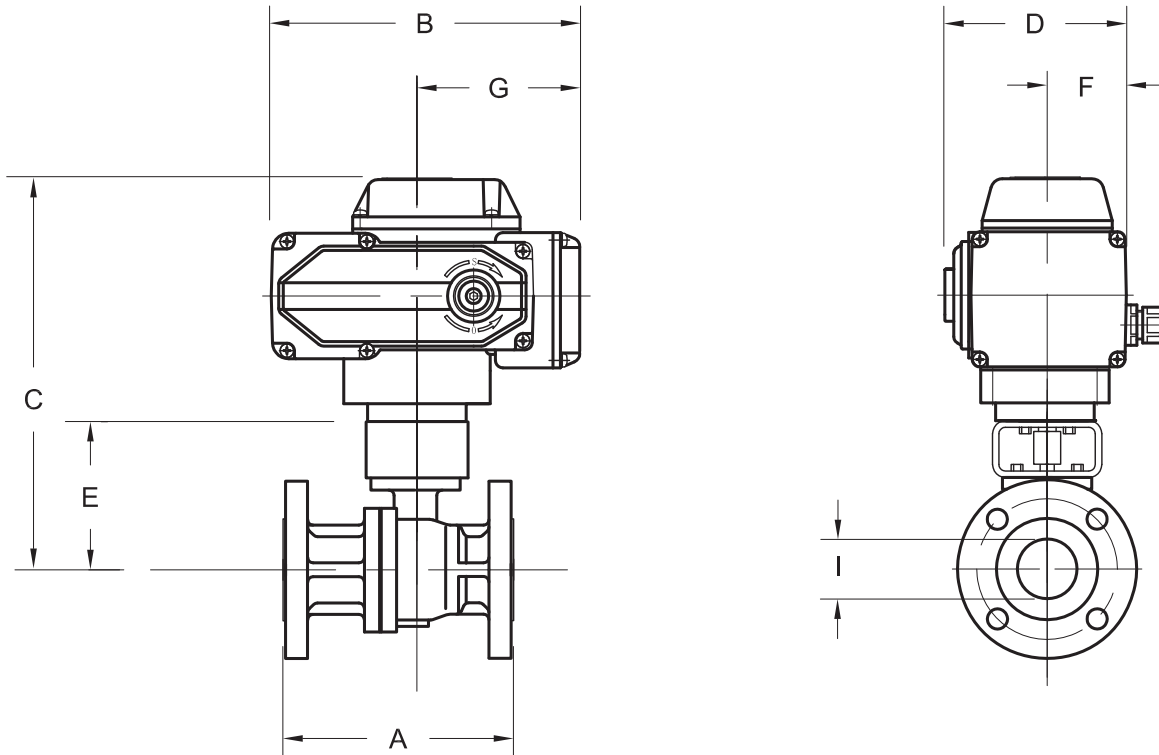
- K Series electric actuator
- Actuator speed: 25 sec.
- Most voltages available
- Quarter turn: 0-90° rotation
- NEMA 4/4X certified by UL labs
- ISO 5211 mounting standard
- Visual position indicator
- Self-locking drive train
- Mounts in any direction
- 1/2" NPT conduit connection
- CSA-NRTL /C and CE certified
- Temperature range: 0°F to 160°F

300F_S K4A .5 - 2

Full port ball valve with electric actuator

300# Flanged 2-pc body 50/50 Seats

Actuators are sized for 150 psi pressure differential



DIMENSIONS, WEIGHTS & SPECIFICATIONS

Size	A	B	C	D	E	F	G	I	Actuator	Wt.(lbs.)	Model No.
1/2"	5.50	6.24	9.25	4.51	4.54	2.00	2.99	.59	UNIC 05A	15.0	C300F * S K4A
3/4"	6.00	6.24	9.37	4.51	4.66	2.00	2.99	.79	UNIC 05A	17.0	D300F * S K4A
1"	6.50	6.24	9.76	4.51	5.05	2.00	2.99	.98	UNIC 05A	20.0	E300F * S K4A
1-1/2"	7.50	8.17	12.09	4.82	5.65	1.62	4.33	1.50	UNIC 10A	34.0	G300F * S K4A
2"	8.50	8.17	13.16	4.82	5.90	1.62	4.33	1.97	UNIC 10A	40.0	H300F * S K4A

Note: Dimensions "C" & "E" include a 3" high mounting bracket

*C = Carbon Stl Body, 316SS Trim
*S = 316SS Body & Trim

300 VALVE SPECIFICATIONS

- 300F Class 300
- Standard Steam Working Pressure: 150SWP, optional 300PSIG
- Protected Seat Design
- Fire Safe Designed to API607-5
- Spiral Wound Body Gasket w/Secondary metal to metal seat
- Carbon Steel or Stainless Steel Body
- Seats: 50/50
- Max Temp: 50/50 seats: 525°F

ELECTRIC ACTUATOR FEATURES

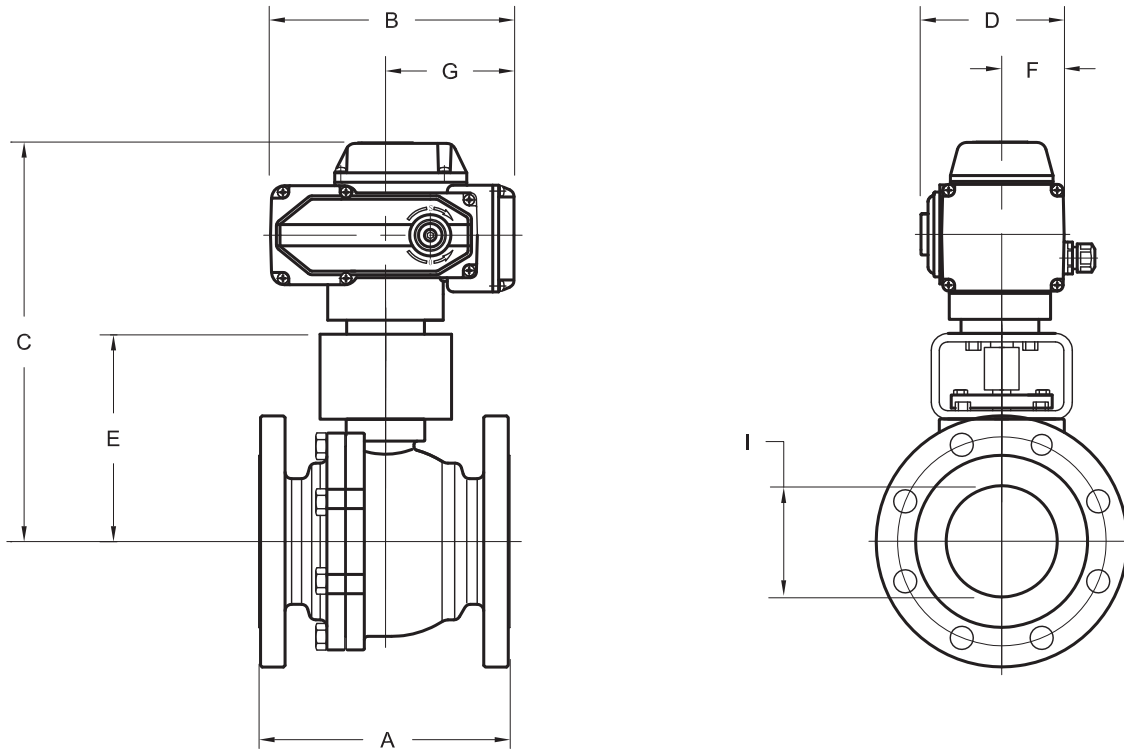
- K Series electric actuator
- Actuator speed: 25 sec.
- Most voltages available
- Quarter turn: 0-90° rotation
- NEMA 4/4X certified by UL labs
- ISO 5211 mounting standard
- Visual position indicator
- Self-locking drive train
- Mounts in any direction
- 1/2" NPT conduit connection
- CSA-NRTL /C and CE certified
- Temperature range: 0°F to 160°F

300F_S K4A 3 - 8

Full port ball valve with electric actuator

300# Flanged 2-pc body 50/50 Seats

Actuators are sized for 150 psi pressure differential



DIMENSIONS, WEIGHTS & SPECIFICATIONS

Size	A	B	C	D	E	F	G	I	Actuator	Wt.(lbs.)	Model No.
3"	11.12	10.10	13.95	6.16	6.67	2.46	5.25	3.00	UNIC 20A	83.0	J300F * S K4A
4"	12.00	10.10	15.68	6.16	8.40	2.46	5.25	4.00	UNIC 40A	121.0	K300F * S K4A
6"	15.88	15.00	20.41	9.53	11.20	4.13	7.85	5.98	UNIC 100A	278.7	M300F * S K4A
8"	19.75	15.00	20.81	9.98	11.60	4.13	7.85	7.87	UNIC 200A	433.9	N300F * S K4A

Note: Dimensions "C" & "E" include a 3" high mounting bracket on 3" valve and a 4" high mounting bracket on 4" - 8" valves

*C = Carbon Stl Body, 316SS Trim

*S = 316SS Body & Trim

300 VALVE SPECIFICATIONS

- 300F Class 300
- Standard Steam Working Pressure: 150SWP, optional 300PSIG
- Protected Seat Design
- Fire Safe Designed to API607-5
- Spiral Wound Body Gasket w/Secondary metal to metal seat
- Carbon Steel or Stainless Steel Body
- Seats: 50/50
- Max Temp: 50/50 seats: 525°F

ELECTRIC ACTUATOR FEATURES

- K Series electric actuator
- Actuator speed: 25 sec.
- Most voltages available
- Quarter turn: 0-90° rotation
- NEMA 4/4X certified by UL labs
- ISO 5211 mounting standard
- Visual position indicator
- Self-locking drive train
- Mounts in any direction
- 1/2" NPT conduit connection
- CSA-NRTL /C and CE certified
- Temperature range: 0°F to 160°F