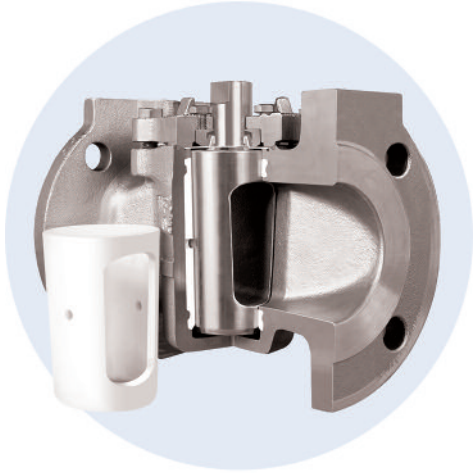


# 067 Series

## Non-lubricated Plug Valve



The 067 is a stainless steel (also available in other materials), ANSI Class 150 flanged plug valve. It can be equipped with a manual handle or with pneumatic or electric actuators.

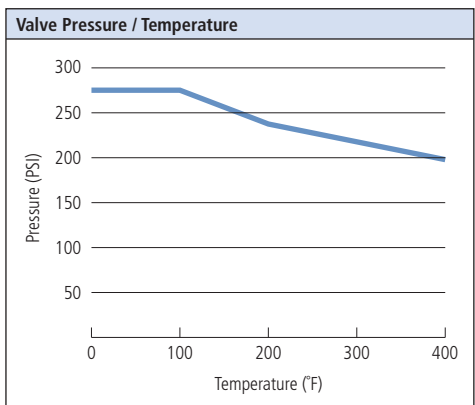
A full range of accessory items are available including limit switches, solenoid valves, positioners and manual override devices.

### FEATURES

- Rugged construction ideal for corrosives and vacuum services.
- Easy turning without lubrication.
- Quick, quarter turn rotation.
- Superior long-lasting shut-off.
- Integrally cast total port defining lips.
- One-piece integrally cast plug and stem.
- Inherent blow-out proof stem.
- Self-cleaning on valve rotation.
- Bi-directional laminar flow.
- External adjustment of in-line seal.
- Inherent double stem seal.
- Self-draining in upright position.
- NO body cavities.
- Complete line of accessories.

### TYPICAL APPLICATIONS

- Clean, dirty, corrosive, or hazardous liquids and gases.
- Viscous liquids, scaling liquids and slurries.
- Abrasive or fibrous slurries.
- Low pressure steam.
- Food, pharmaceutical, and dry materials.
- Vacuum service.



### MATERIALS OF CONSTRUCTION

- Plug and Stem:**  
316 stainless steel.
- Sleeve and Seals:**  
PTFE.
- Body:**  
316 stainless steel.

### ACTUATOR CONFIGURATIONS

- Electric.
- Pneumatic (spring return).
- Pneumatic (double acting).
- Manual handle.
- Manual handle with limit switch.
- Gear operator.

### PRESSURE RANGE

29 inHg vacuum to 275 PSI

### TEMPERATURE RANGE

-40°F to 400°F

### CV FACTORS

Size	CV
1/2"	9
3/4"	9
1"	43
1-1/2"	89
2"	172
3"	294
4"	548