

WM Series

Use & Care Manual

1. INSTALLATION

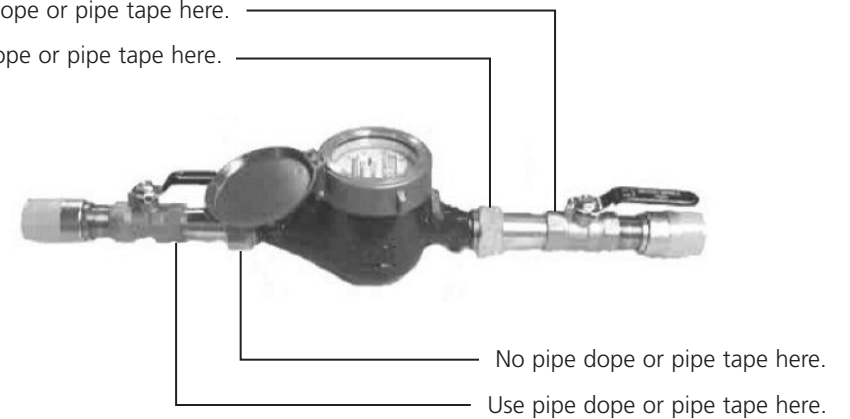
1. Thoroughly flush the service line upstream of the meter to remove dirt and debris.
2. Set the meter inline. Cold water meters can be either vertically or horizontally installed. Hot water meters must be installed horizontally with the register facing upwards.
3. Make sure the water flow follows the arrow cast on the meter body.
4. Slowly open any upstream valves to prevent damage to the meter.



2. INSTALLATION DIAGRAM

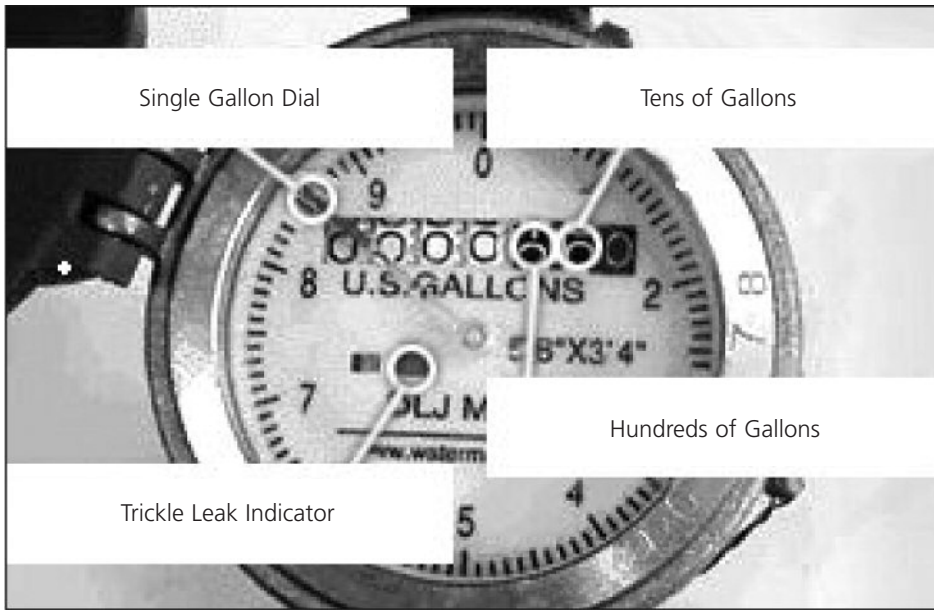
Use pipe dope or pipe tape here.

No pipe dope or pipe tape here.



3. READING THE METER ODOMETER

5/8" to 1" Residential Meters



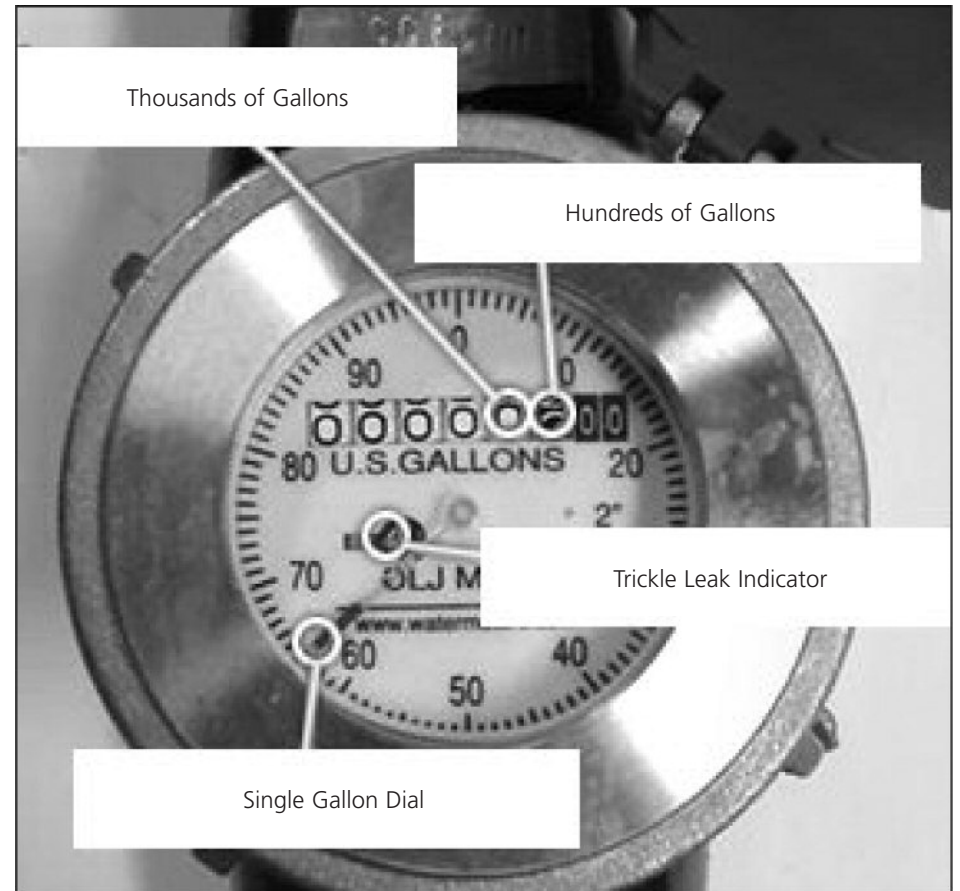
Example (maximum registration is 9,999,999 gallons):

1	2	3	4	5	6	0
---	---	---	---	---	---	---

= 1,234,560 gallons

Note: To convert gallons to cubic feet multiply the gallons reading by 0.1337 to get cubic feet (there are 7.48052 gallons per cubic foot).

1-1/2" to 2" Residential Meters, 1-1/2" to 3" Turbine Meters



Example (maximum registration is 99,999,900 gallons):

1	2	3	4	5	6	00
---	---	---	---	---	---	----

= 12,345,600 gallons