

FireBag®

Thermal-activated Shut-off Device for Propane, Natural & Butane Gas



The FireBag® automatically turns off gas supply in the event of fire, preventing explosions and the spreading of fire.

When outside temperature reaches 203°F to 212°F (95°C to 100°C) the metal alloy that keeps plug and cartridge together melts and the spring pressure pushes the plug against the gas opening to close it completely. No fire or heat detectors are required to automatically intercept gas flow.

CERTIFICATIONS

- AGA ANSI Z21.15-CGA 9.1-M97 (certain models)
- CGA ANSI Z21.15-CGA 9.1-M97 (certain models)
- DIN 3586 thermo activated safety device for gas applications
- European UNI EN 1775 Standard for indoor gas installations
- European Directive 90/396/CEE certification for durability in mechanical or thermal stress
- German DVGW TRGI 86/96 Standard for thermo activated locking systems on gas heaters, water heaters & domestic gas fittings
- German Standard Muster-Feuerverordnung (FeuVo v. 02/95 - edition 09/97) for thermo activated devices
- Italian UNI 7129 Ed 2001 Standard for fire protection and gas supply line components

MAXIMUM PRESSURE

72.5 PSI (NPT)
232 PSI (Flanged)

TEMPERATURE RANGE

-4°F to 176°F

MATERIALS OF CONSTRUCTION

Housing and Finishing:
Zinc-plated steel

SPECIFICATIONS

Set-off Temperature:
203°F to 212°F

Heat Resistance:
1,697°F for 60 minutes
at 72.5 PSI (NPT)

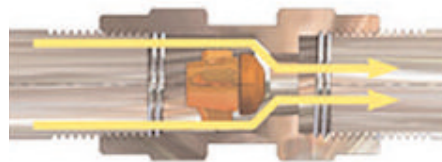
Cv FACTORS

Size	Cv
1/2"	198
3/4"	377
1"	580

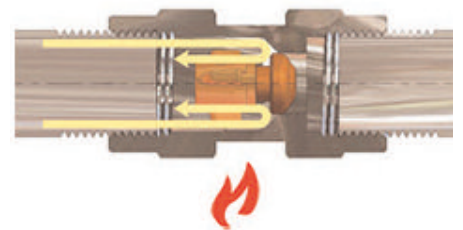
CROSS SECTIONS

The FireBag is triggered when the ambient temperature reaches 212°F, blocking the flow of gas for at least 60 minutes at the temperature of 1,697°F.

Inactive, temperature below 203°F

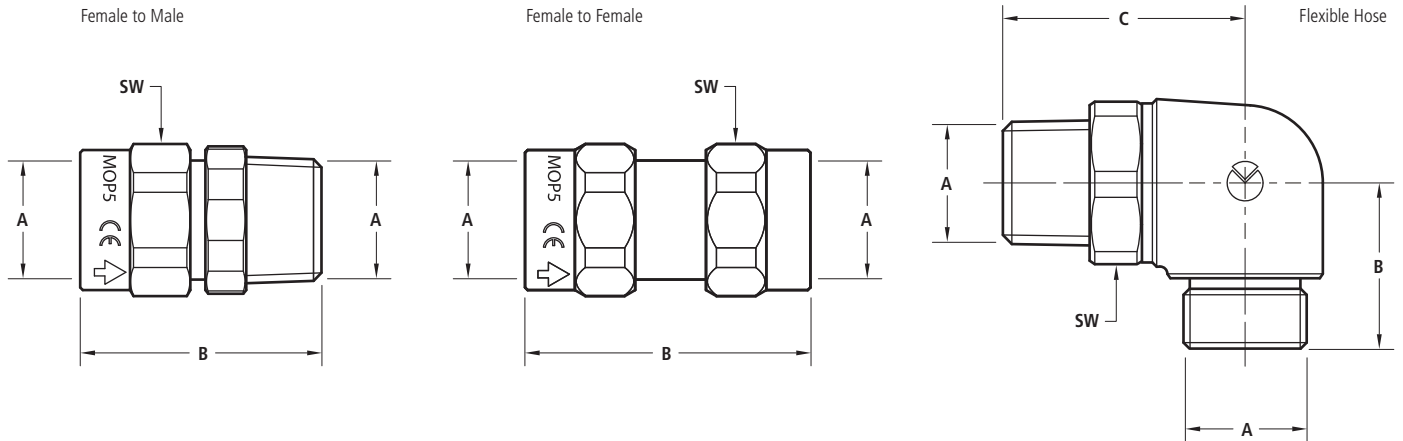


Active, temperature above 212°F



FireBag®

Thermal-activated shut-off device for propane, natural & butane gas
(NPT threaded and flanged connections)

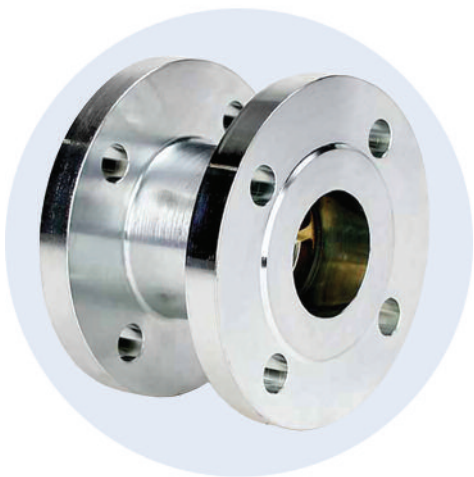


DIMENSIONS & SPECIFICATIONS

Size	SW	Female to Male*			Female to Female*			Flexible Hose			
		A	B	Model No.	A	B	Model No.	A	B	C	Model No.
1/2"	27 mm	0.50"	1.81"	TASK100FM1-NPT	0.50"	2.13"	TASK100FF1-NPT	0.50"	1.18"	1.57"	RT406C00-NPT
3/4"	32 mm	0.75"	1.93"	TASK200FM1-NPT	0.75"	2.40"	TASK200FF1-NPT	-	-	-	-
1"	41 mm	1.00"	2.20"	TASK300FM1-NPT	1.00"	2.72"	TASK300FF1-NPT	-	-	-	-
1-1/4"	50 mm	1.25"	3.54"	TASK400FM1-NPT	1.25"	3.54"	TASK400FF1-NPT	-	-	-	-
1-1/2"	55 mm	1.50"	3.54"	TASK500FM1-NPT	1.50"	3.54"	TASK500FF1-NPT	-	-	-	-
2"	70 mm	2.00"	4.33"	TASK600FM1-NPT	2.00"	4.33"	TASK600FF1-NPT	-	-	-	-

* A model withstanding BIOGAS is available upon request.

ANSI CLASS 150 AVAILABLE ON REQUEST



OTHER PRODUCTS



G2T
(Valve with FireBag)



G4T
(Top Entry)